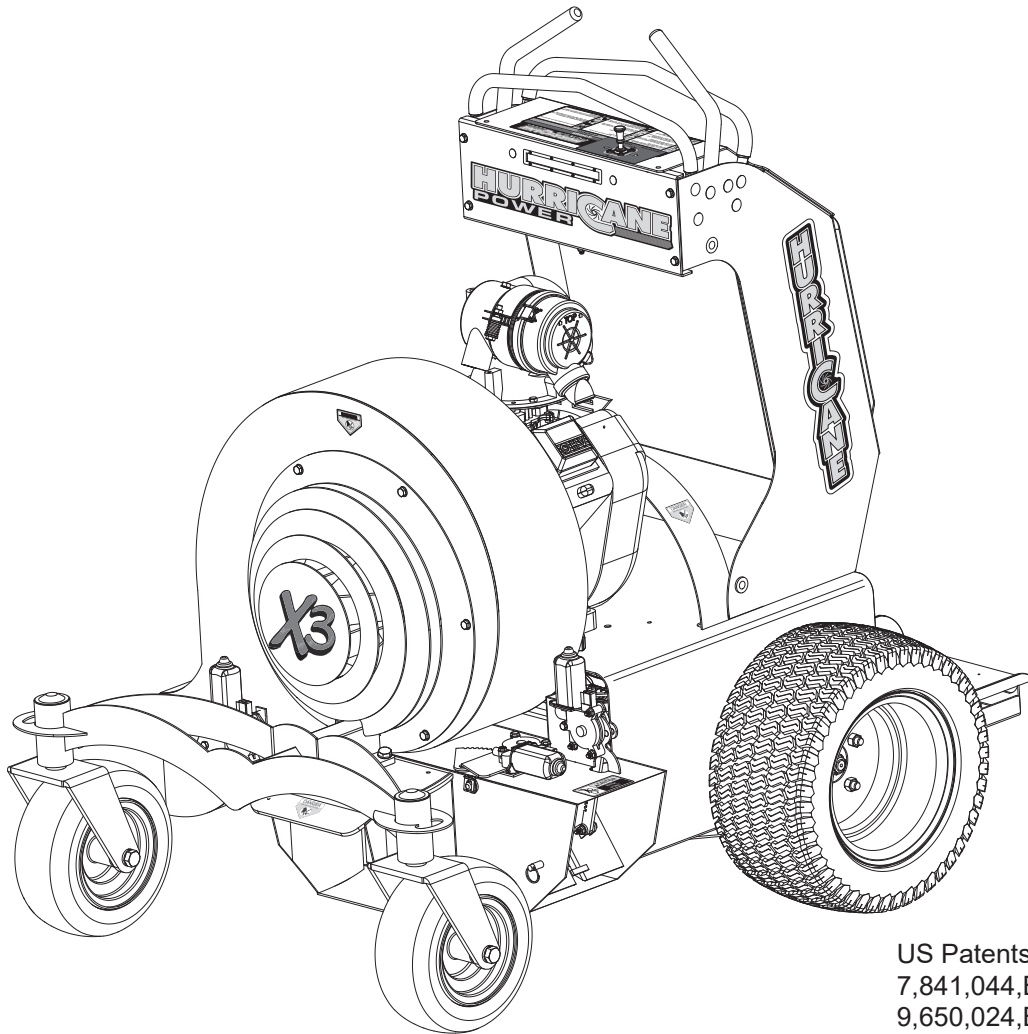


# HURRICANE POWER

Commercial Debris Blower

## X3 Parts Manual

S/N 171225 - 171466



US Patents  
7,841,044,B1  
9,650,024,B2

# DECALS

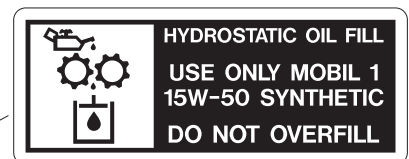
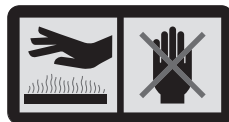
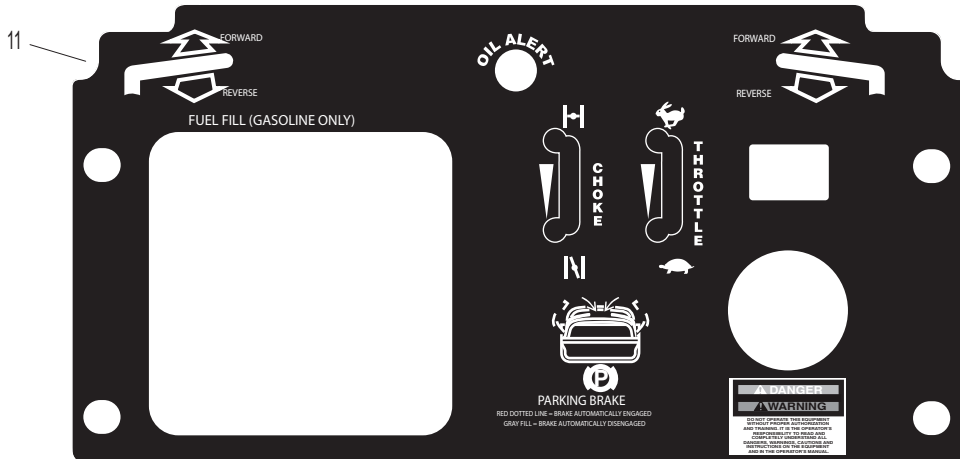
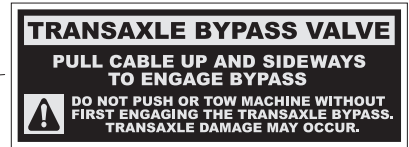
Decals

Hurricane Power

---

|   | <b>Part<br/>Number</b> | <b>Description</b>       | <b>Quantity</b> |    | <b>Part<br/>Number</b> | <b>Description</b>      | <b>Quantity</b> |
|---|------------------------|--------------------------|-----------------|----|------------------------|-------------------------|-----------------|
| 1 | X3-16-4201             | Front Logo Decal         | 1               | 8  | 425-4209               | Hydro Decal             | 1               |
| 2 | X3-4212                | Data Plate               | 1               | 9  | 425-4206               | Danger Decal            | 5               |
| 3 | ZP4210                 | Joystick Dash Decal      | 1               | 10 | 425-4204               | Made in the USA Decal   | 1               |
| 4 | 425-4205               | Hot Decal                | 1               | 11 | 425-4211               | Dash Controls Decal     | 1               |
| 5 | X3-16-4202             | Left/Right Upright Decal | 2               | 12 | 314-17-42100           | Trans Bypass            | 2               |
| 6 | X3                     | Safety Cover Decal       | 1               | 13 | X3-4213                | Emergency Brake Release | 1               |
| 7 | 425-4208               | Pinch Decal              | 2               |    |                        |                         |                 |

# DECALS



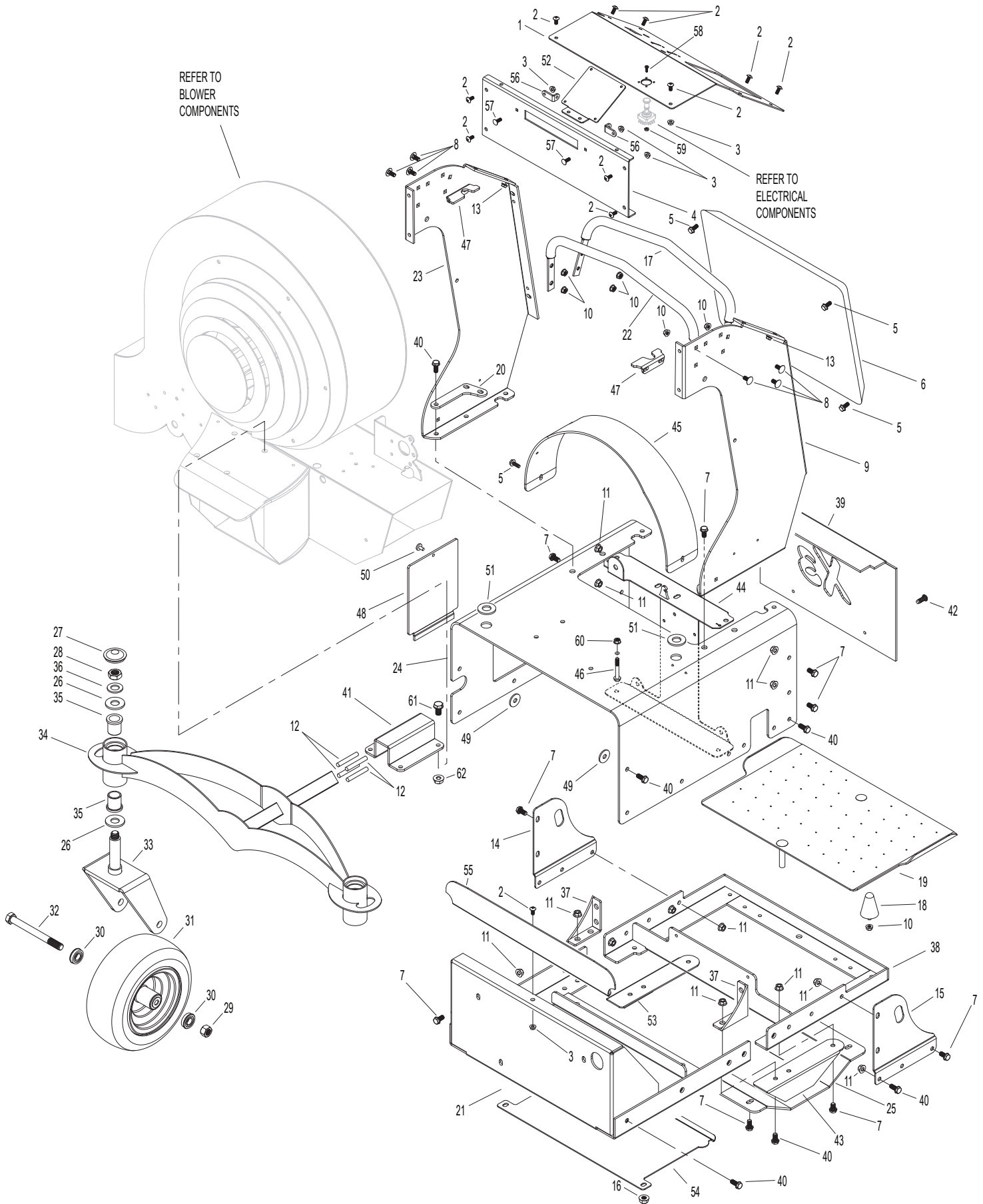
# CHASSIS COMPONENTS

Chassis

Hurricane Power

| Part Number | Description   | Quantity   | Part Number | Description | Quantity     |  |    |
|-------------|---------------|--|-------------|-------------|--------------|--|----|
| 1           | ZF17452       | Dash   | 1           | 32          | 15153        | Bolt 5/8-11 x 6-1/2                      | 2  |
| 2           | 15102         | 1/4-20 x 3/4 Flange Bolt   | 10          | 33          | 109-10-T2010 | Caster Fork                              | 2  |
| 3           | 15101         | 1/4-20 Flange Nut  | 12          | 34          | XFT17029     | Front End Frame Assembly                 | 1  |
| 4           | ZFT17451      | Dash Front Panel   | 1           | 35          | 0117-162024  | Plastic Bushing                          | 4  |
| 5           | 15108         | 5/16-18 x 3/4 Flange Bolt  | 6           | 36          | 15137        | 3/4 Machine Bushing                      | 2  |
| 6           | 112-18-1812   | Pad  | 1           | 37          | X3-14-3017   | Hydro 90° Bracket                        | 2  |
| 7           | 15112         | 3/8-16 x 3/4 Flange Bolt   | 28          | 38          | XF1750       | Rear Chassis Frame                       | 1  |
| 8           | 15109         | 5/16-18 x 3/4 Carriage Bolt  | 12          | 39          | X3-T1444     | Toe Kick                                 | 1  |
| 9           | XFT17433      | Joystick Upright, Left   | 1           | 40          | 15062        | 3/8-16 x 1 Flange Bolt                   | 14 |
| 10          | 15107         | 5/16-18 Flange Nut   | 18          | 41          | 16-2002      | Front End Torsion Plate                  | 1  |
| 11          | 15111         | 3/8-16 Flange Nut  | 66          | 42          | 15157        | 5/16-18 x 1/2 Self Tapping Screw         | 2  |
| 12          | 16-2003       | Rubber Cord (Set of 4)   | 1           | 43          | XF1743       | Bottom Chassis Bracket Left              | 1  |
| 13          | 15061         | 1/4-20 Riv-Nut   | 2           | 44          | XF1730       | Hydro I-Beam                             | 1  |
| 14          | X310-T2006    | Right Side Plate Tie Down  | 1           | 45          | XFT1720      | Belt Guard                               | 1  |
| 15          | X310-T2018    | Left Side Plate Tie Down   | 1           | 46          | ZP16225      | 5/16-18 x 2-1/4 Flange Hex Bolt          | 4  |
| 16          | 15056         | 1/2-13 Nylock Jamb Nut   | 1           | 47          | X3-1440      | Neutral Centering Bracket                | 2  |
| 17          | 16-T30502     | Reverse Stop   | 1           | 48          | X3-T1454     | Battery Door                             | 1  |
| 18          | 425-16-11100  | Rubber Mount   | 4           | 49          | X3-1455      | Motor Box Spacer                         | 2  |
| 19          | X310-2011     | Foot Pad   | 1           | 50          | 15313        | 1/4-20 x 1/2 Cap Screw With Plastic Knob | 1  |
| 20          | XF1753        | Upper I-Beam Mount   | 2           | 51          | 5187         | Rubber Grommet                           | 2  |
| 21          | XF1749        | Front Chassis Frame  | 1           | 52          | ZF17442      | Relay Mount Bracket                      | 1  |
| 22          | 16-T30501     | Forward Stop   | 1           | 53          | XF1740       | Bottom Chassis Bracket Right             | 1  |
| 23          | XFT17432      | Joystick Upright, Right  | 1           | 54          | ZF1445       | Debris Guard                             | 1  |
| 24          | XFT17007      | Motor Box  | 1           | 55          | ZF1745       | Forward Debris Guard                     | 1  |
| 25          | X3-1445       | Skid Plate   | 1           | 56          | ZF17403      | "L" Headlight Bracket                    | 2  |
| 26          | 15136         | 1 x 10 Gauge Machine Bushing   | 4           | 57          | 17109        | 1/4-20 x 3/4 Carriage Bolt               | 4  |
| 27          | 15161         | Plastic Grease Cap   | 2           | 58          | 16012        | #8-32 x 3/8 Phillips Head Screw          | 4  |
| 28          | 15139         | 3/4-10 Nylon Jamb Nut  | 2           | 59          | 16106        | #8-32 Keps Nut                           | 4  |
| 29          | 15581         | 5/8-11 Nylock Nut  | 2           | 60          | 17107        | 5/16-18 Serrated Flange Nut              | 4  |
| 30          | 109-17-7011   | Caster Bearings  | 4           | 61          | 15064        | 1/2-13 x 1-1/4 Flange Bolt               | 4  |
| 31          | 109-17-7012   | Caster Wheel & Tire with Bearing (For Serial Numbers Up to 171374)     | 2           | 62          | 15046        | 1/2-13 Flange Nut                        | 4  |
|             | 109-17-7012-5 | Caster Wheel & Tire with Bearing (For Serial Numbers 171375 and Later) | 2           |             |              |  |    |

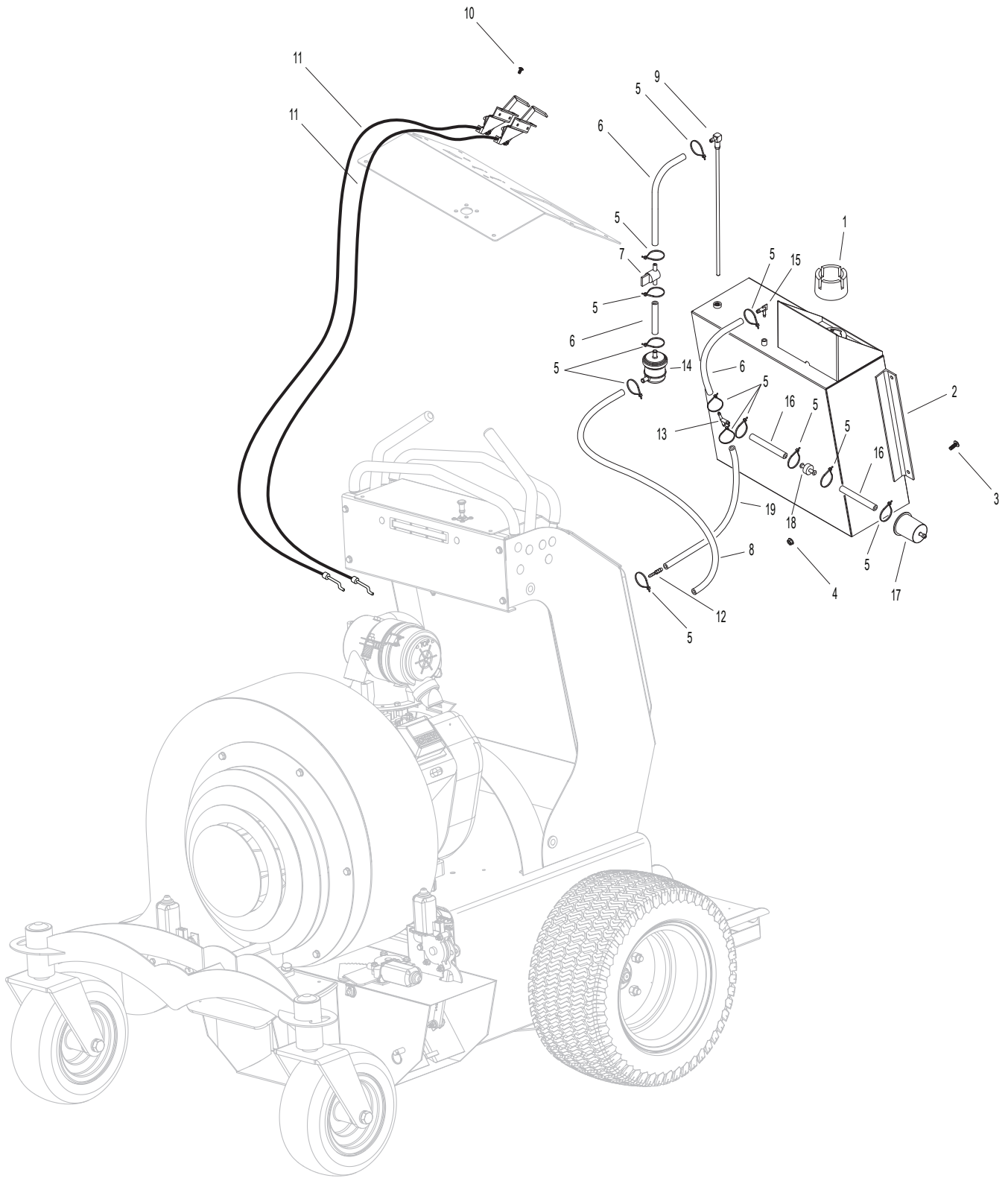
# CHASSIS COMPONENTS



# FUEL AND THROTTLE COMPONENTS

| Fuel and Throttle |             |                         | Hurricane Power |             |                |                      |   |
|-------------------|-------------|-------------------------|-----------------|-------------|----------------|----------------------|---|
| Part Number       | Description | Quantity                | Part Number     | Description | Quantity       |                      |   |
| 1                 | 1101-73601  | Fuel Cap                | 1               | 11          | 425-1041-76010 | Throttle/Choke Cable | 2 |
| 2                 | ZF15034     | Fuel Tank               | 1               | 12          | 110-17-5407    | 1/4 x 3/16 Reducer   | 1 |
| 3                 | 15091       | 1/4-20 x 3/4 FPHMS      | 4               | 13          | 110-17-5406    | 1/4 Tee              | 1 |
| 4                 | 15101       | 1/4-20 Flange Nut       | 4               | 14          | 110-17-5403    | Fuel Filter          | 1 |
| 5                 | N/A         | Zipties                 | 14              | 15          | X3-TL522       | Plastic Elbow        | 1 |
| 6                 | ZP15039     | Fuel Line (6")          | 4               | 16          | ZP15036        | Fuel Line (2-1/2")   | 2 |
| 7                 | 1101-73805  | Ball Valve Fuel Shutoff | 1               | 17          | 110-17-5404    | Emissions Filter     | 1 |
| 8                 | ZP15054     | Fuel Line (5")          | 1               | 18          | 110-17-5405    | Check Valve          | 1 |
| 9                 | 1101-73811  | Fuel Pickup             | 1               | 19          | ZP15038        | Fuel Line (4")       | 1 |
| 10                | XP15090     | Phillips, Self Drilling | 4               |             |                |                      |   |

# FUEL AND THROTTLE COMPONENTS



# HYDROSTATIC COMPONENTS

Hydro

Hurricane Power

| Part Number | Description    | Quantity                   | Part Number | Description | Quantity     |                              |   |
|-------------|----------------|----------------------------|-------------|-------------|--------------|------------------------------|---|
| 1           | 139530         | Control Grip 9-1/2"        | 2           | 34          | 17-4101      | Idler Pulley                 | 1 |
| 2           | 15162          | 3/32" Cotter Pin           | 4           | 35          | 425-52114    | Hydro Oil Filter             | 2 |
| 3           | 14-40-2011     | Control Handle             | 2           | 36          | 15046        | 1/2-13 Flange Nut            | 1 |
| 4           | 15140          | 1/4-28 Nylock Nut          | 4           | 37          | ZF15052      | Idler Arm                    | 1 |
| 5           | 15315          | 1/2 x 4-1/2 Clevis Pin     | 2           | 38          | 15101        | 1/4-20 Flange Nut            | 8 |
| 6           | 0117-081216    | Plastic Bushings           | 8           | 39          | 15047        | 1/2-13 Nylock Nut            | 1 |
| 7           | X3-1437        | Lower Control Switch       | 1           | 40          | XP173213     | 1/4-20 x 1/2 Set Screw       | 2 |
|             |                | Bracket Right              |             | 41          | 15054        | 1/4 x 1-1/4 Key Stock        | 1 |
| 8           | X3-1438        | Lower Control Switch       | 1           | 42          | XF17-3211    | Drive Pulley                 | 1 |
|             |                | Bracket Left               |             | 43          | XP-A4545     | Drive Belt                   | 1 |
| 9           | 15081          | 1/4-28 Right Hand Nut      | 2           | 44          | XP17020      | Engine - Vanguard 23 HP      | 1 |
| 10          | 2500-2100      | 1/4-28 x 21" Rod           | 2           | 45          | HU002        | Hydro Fitting                | 2 |
| 11          | 15086          | 1/4-28 Left Hand Nut       | 2           | 46          | 103-17-4633  | 1/4-28 Right Hand            | 2 |
| 12          | 103-17-4635    | 1/4-28 x 3" Turnbuckle     | 2           |             |              | 90 Knuckle                   |   |
| 13          | ZP16054        | 4-1/2" Control Rod         | 2           | 47          | XP17013      | X3 Muffler Kit               | 1 |
| 14          | 106-17-4637    | 1/4-28 Ball Joint LH       | 2           | 48          | XP17012      | Muffler Clamp                | 1 |
| 15          | X3-1520        | Transmission Control Arm   | 2           | 49          | X3-72123ZT   | Fan Pulley Kit               | 2 |
| 16          | 15107          | 5/16-18 Flange Nut         | 8           | 50          | 3A7C-1XXX    | Right Hydro Pump - X         | 1 |
| 17          | 17444          | 5/16-24 x 1-1/2" Bolt      | 4           | 51          | 3A7B-1XXX    | Left Hydro Pump - X          | 1 |
| 18          | 103-17-4429    | Ball Stud                  | 4           | 52          | X3-14-7012   | 20 x 8 x 8 Drive             | 2 |
| 19          | 103-17-4431    | Dampener Clip              | 4           |             |              | Tire and Rim                 |   |
| 20          | 425-103-174430 | Dampener                   | 2           |             |              | (For Serial Numbers          |   |
| 21          | ZF15048        | Hydro Tank Bracket         | 1           |             |              | Up to 171374)                |   |
| 22          | 15102          | 1/4-20 x 3/4 Flange Bolt   | 8           |             | X3-14-7012-5 | 20 x 8 x 8 Drive             | 2 |
| 23          | ZP15047        | Hydro Tank                 | 2           |             |              | Tire and Rim                 |   |
| 24          | 15083          | Oetiker Clamp              | 4           |             |              | (For Serial Numbers          |   |
| 25          | X3-16050       | Hydro Hose                 | 2           |             |              | 171375 and Later)            |   |
| 26          | X3-14-14       | Hydro Neutral Release      | 2           | 53          | 15088        | 1/2-20 Lug Nut               | 8 |
|             |                | Cable                      |             | 54          | XF1744       | Thin Spacer Plate            | 1 |
| 27          | 15111          | 3/8-16 Flange Nut          | 13          | 55          | XF1745       | Thick Spacer Plate           | 2 |
| 28          | 15087          | 3/8-16 x 2-1/2 Flange Bolt | 8           | 56          | 314-15-15147 | 5/16" Flat Washer            | 4 |
| 29          | 15072          | 3/8-16 x 9-1/2 Hex Bolt    | 1           | 57          | 15082        | 5/16" Lockwasher             | 4 |
| 30          | X3-1436        | Hydro Spacer Tube          | 1           | 58          | 15109        | 5/16-18 x 3/4" Carriage Bolt | 2 |
| 31          | 15060          | 1/2 x 2-1/2 Clevis Pin     | 2           | 59          | 15112        | 3/8-16 x 3/4" Flange Bolt    | 2 |
| 32          | 16127          | #98 Idler Spring           | 1           | 60          | ZP15018      | Oil Drain                    | 1 |
| 33          | 15303          | 1/2-13 x 2 Hex Bolt        | 2           |             |              |                              |   |





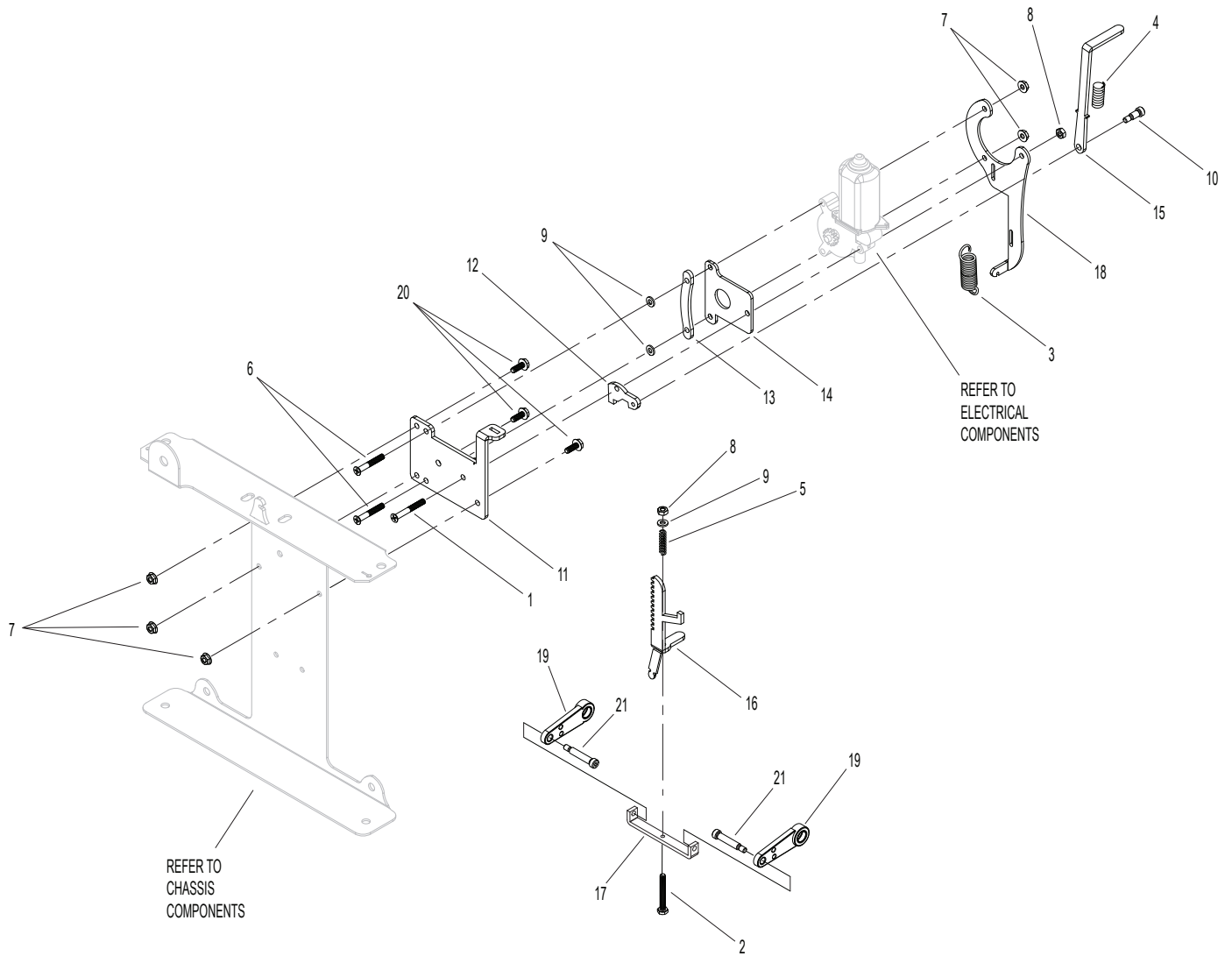
# BRAKE ASSEMBLIES

Brakes

Hurricane Power

|    | <b>Part<br/>Number</b> | <b>Description</b>                            | <b>Quantity</b> |    | <b>Part<br/>Number</b> | <b>Description</b>         | <b>Quantity</b> |
|----|------------------------|---|-----------------|----|------------------------|----------------------------|-----------------|
| 1  | 15306                  | 1/4-20 x 2 Phillips Head<br>Machine           | 1               | 11 | X3-1511                | Brake Backing Plate        | 1               |
| 2  | 15307                  | 1/4-20 x 2 Hex Bolt                           | 1               | 12 | X3-1512                | Brake Cam                  | 1               |
| 3  | 15128                  | #29 Extension Spring                          | 1               | 13 | X3-1513                | Brake Spacer Bar           | 1               |
| 4  | 15308                  | #21 Compression Spring                        | 1               | 14 | X3-1514                | Cam Cover Plate            | 1               |
| 5  | 15309                  | #29 Compression Spring                        | 1               | 15 | ZF15053                | Brake Release Lever        | 1               |
| 6  | 15165                  | 1/4-20 x 1-3/4 Phillips<br>Head Machine Screw | 2               | 16 | X3-1516                | Brake Gear Rack            | 1               |
| 7  | 15101                  | 1/4-20 Flange Nut                             | 5               | 17 | X3-1517                | Brake Lever Arm            | 1               |
| 8  | 15067                  | 1/4-20 Nylock Nut                             | 2               | 18 | X3-1518                | Switch Mounting Plate      | 1               |
| 9  | 15016                  | 1/4-20 Flat Washer                            | 3               | 19 | X3-1519                | Hydro Brake Arm            | 2               |
| 10 | 15310                  | 5/16 x 1/2 Shoulder Bolt                      | 1               | 20 | 15102                  | 1/4-20 x 3/4 Flange Bolt   | 3               |
|    |                        |   |                 | 21 | 153101                 | 5/16 x 1-1/4 Shoulder Bolt | 2               |

# BRAKE ASSEMBLIES



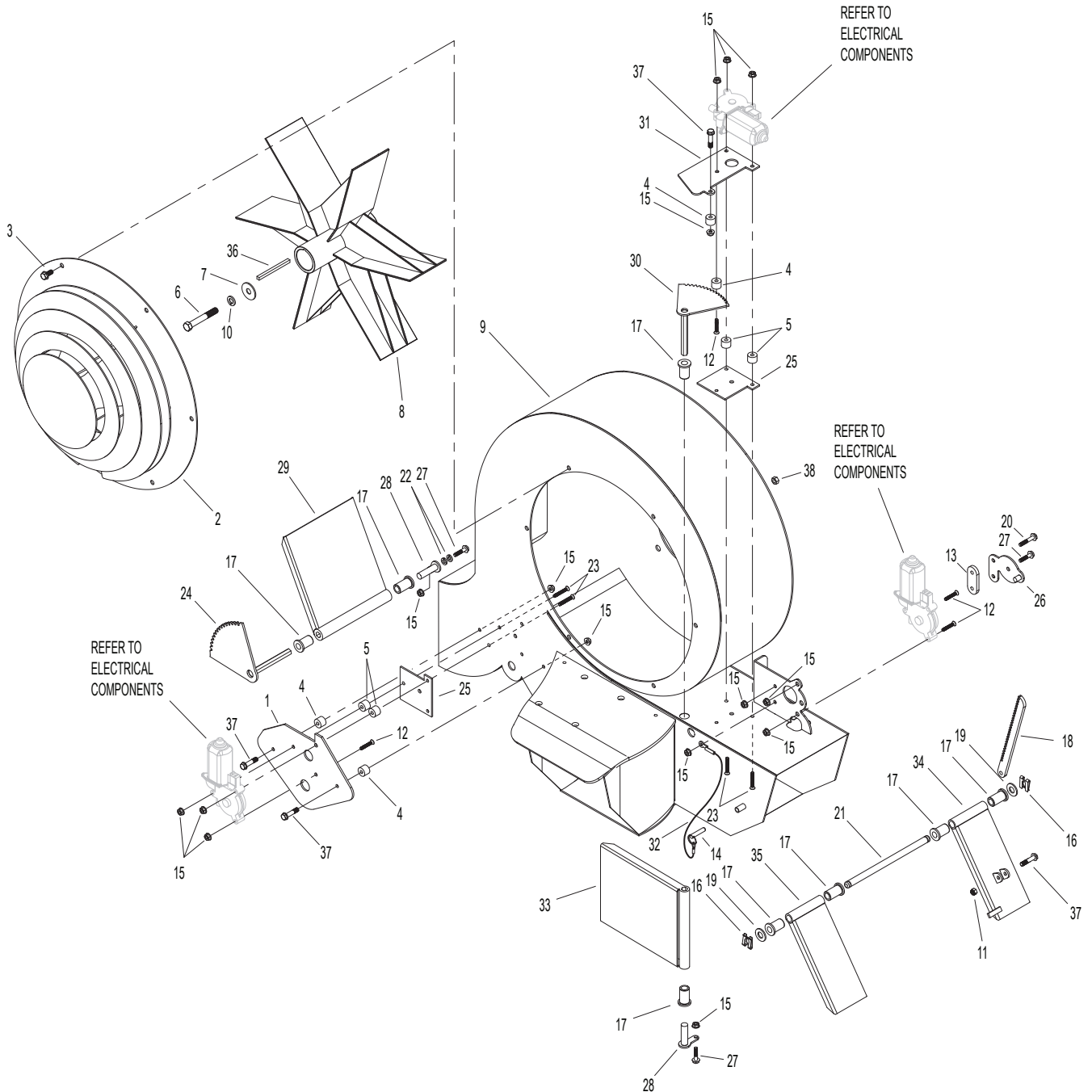
# BLOWER COMPONENTS

Blower

Hurricane Power

| Part Number | Description | Quantity                    | Part Number | Description | Quantity    |                             |   |
|-------------|-------------|-----------------------------|-------------|-------------|-------------|-----------------------------|---|
| 1           | XF1724      | Right Deflector Cover Plate | 1           | 20          | 15103       | 1/4-20 x 1-1/2 Flange Bolt  | 1 |
| 2           | XFT17015    | Safety Cover                | 1           | 21          | XF1766      | Deflector Support Rod       | 1 |
| 3           | 15108       | 5/16-18 x 3/4 Flange Bolt   | 6           | 22          | 15080       | 1/4" Lock Washer            | 4 |
| 4           | X310-2036   | Motor Spacer                | 4           | 23          | 15165       | 1/4-20 x 1-3/4              | 4 |
| 5           | 15164       | Deflector Cover Spacer      | 4           |             |             | Phillips Head Screw         |   |
| 6           | 17092       | 7/16-20 x 2 Hex Bolt        | 1           | 24          | XF1739      | Right Deflector Gear        | 1 |
| 7           | 17009       | 7/16 ID x 1-3/4 OD          | 1           | 25          | X310-2052   | Deflector Spacer Plate      | 2 |
|             |             | Impeller Washer             |             | 26          | 101-10-2028 | Rack Keeper                 | 1 |
| 8           | XF1737      | 1-1/8" Crankshaft           | 1           | 27          | 15102       | 1/4-20 Flange Bolt          | 3 |
|             |             | Impeller                    |             | 28          | X310-2044   | Forward Deflector Pin       | 2 |
| 9           | XFT17006    | Blower Housing              | 1           | 29          | XF1741      | Right Deflector             | 1 |
| 10          | 15098       | 7/16 Lockwasher             | 1           | 30          | X310-2042   | Forward Deflector Gear      | 1 |
| 11          | 15067       | 1/4-20 Nylock Nut           | 1           | 31          | X310-2043   | Forward Deflector           | 1 |
| 12          | 15104       | 1/4-20 x 1-1/4 Phillips     | 4           |             |             | Motor Mount                 |   |
|             |             | Head Screw                  |             | 32          | ZF15158     | Deflector Lock Pin          | 1 |
| 13          | 101-16-2029 | Rack Spacer                 | 1           |             |             | Retaining Cable             |   |
| 14          | 15158       | Deflector Lock Pin          | 1           | 33          | XF1742      | Forward Deflector           | 1 |
| 15          | 15101       | 1/4-20 Flange Nut           | 15          | 34          | XF1746      | Left Power Deflector        | 1 |
| 16          | 101-17-6427 | Safety Clip                 | 2           | 35          | XF1747      | Left Slave Deflector        | 1 |
| 17          | 0117-081216 | 1/2 Plastic Bushing         | 8           | 36          | 17052       | 1/4 x 1/4 x 3-3/8 Key Stock | 1 |
| 18          | 101-16-1821 | Deflector Rack              | 1           | 37          | 16102       | 1/4-20 x 1-1/4 Flange Bolt  | 4 |
| 19          | 15124       | 1/2 SAE Washer              | 2           | 38          | XP17110     | 5/16-24 Serrated Nut        | 4 |

# BLOWER COMPONENTS



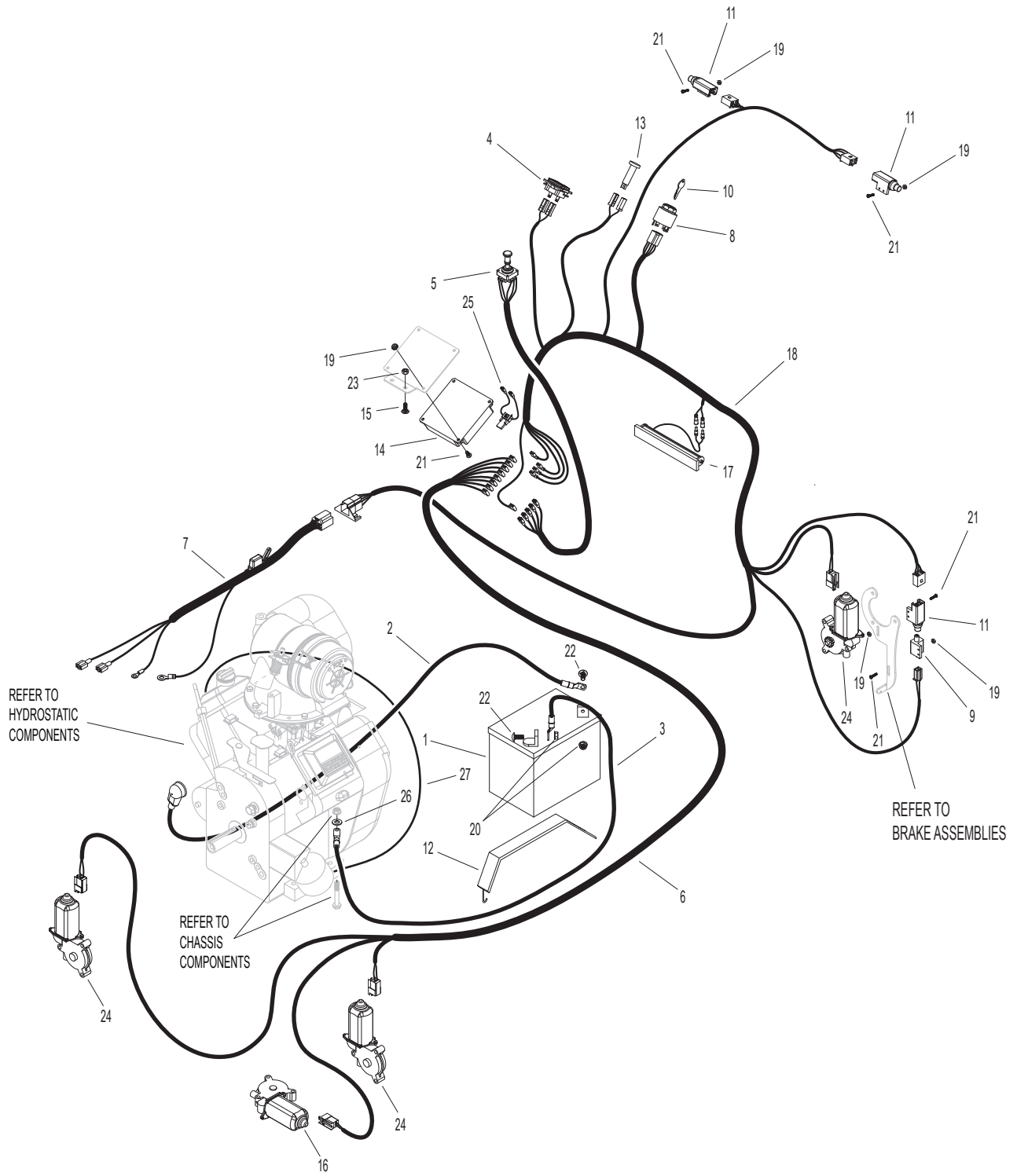
# ELECTRICAL COMPONENTS

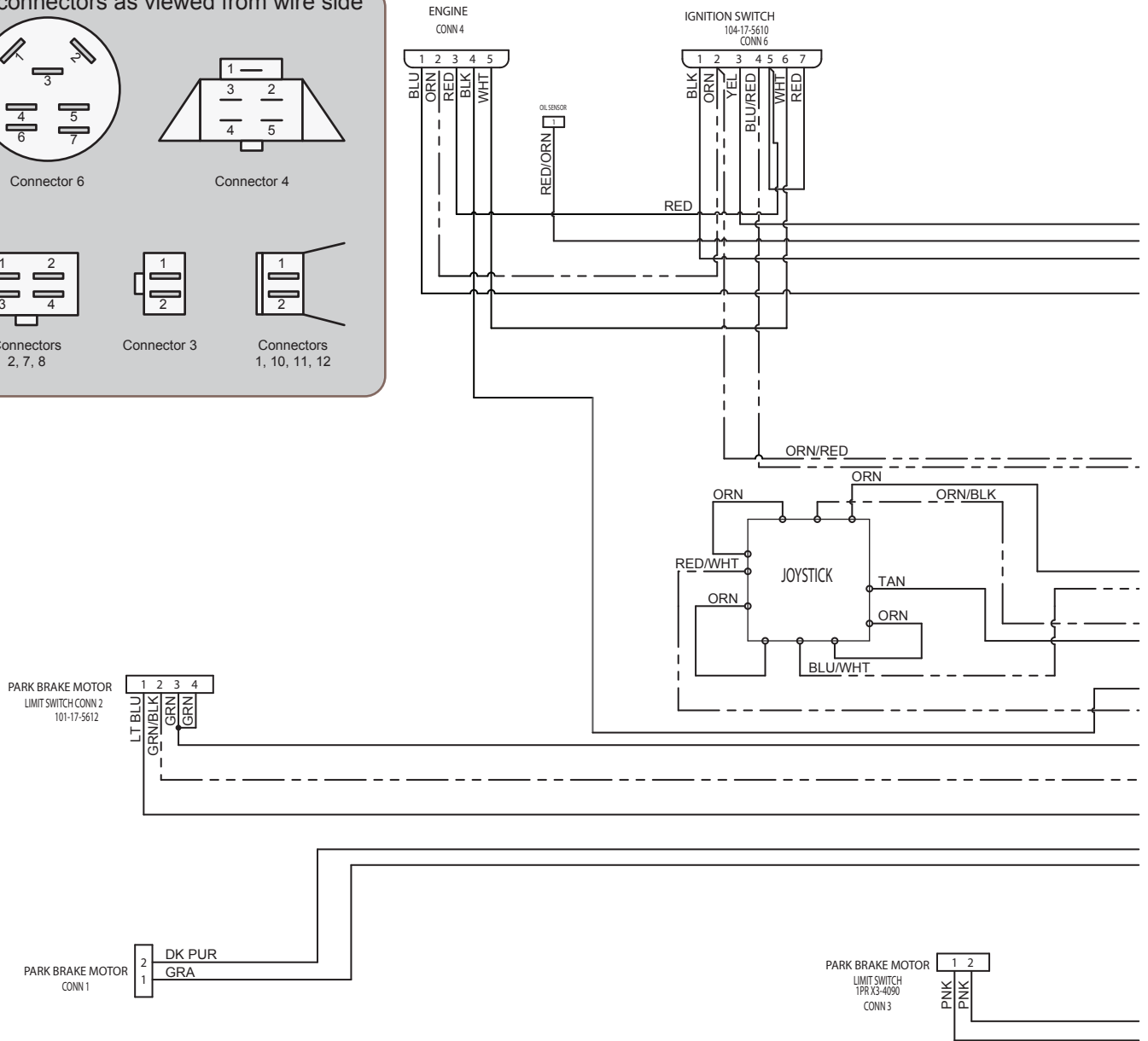
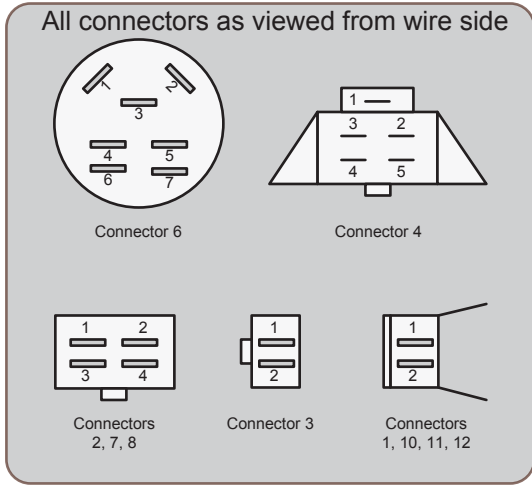
Electrical

Hurricane Power

|    | <b>Part<br/>Number</b> | <b>Description</b>                        | <b>Quantity</b> |    | <b>Part<br/>Number</b> | <b>Description</b>               | <b>Quantity</b> |
|----|------------------------|---|-----------------|----|------------------------|----------------------------------|-----------------|
| 1  | 106-17-4001            | U1 Battery                                | 1               | 14 | ZP2817                 | Control Module                   | 1               |
| 2  | X3-18-1802             | Positive Battery Cable                    | 1               | 15 | 17109                  | 1/4-20 Carriage Bolt             | 2               |
| 3  | X3-18-1803             | Negative Battery Cable                    | 1               | 16 | 101-18-1802            | Deflector Motor Left             | 1               |
| 4  | 104-17-5205            | Tach                                      | 1               | 17 | ZF1750                 | Headlight                        | 1               |
|    | 106-18-1804            | Tach Harness                              | 1               | 18 | XP17884                | Main Wiring Harness              | 1               |
| 5  | ZP173007               | Joystick (With Harness)                   | 1               | 19 | 15106                  | 10-32 Keps Nut                   | 12              |
| 6  | XP17884-1              | Secondary Wiring Harness                  | 1               | 20 | 15107                  | 5/16-18 Flange Nut               | 2               |
| 7  | XP17485                | Vanguard 23 HP Modified<br>Wiring Harness | 1               | 21 | 15105                  | 10-32 x 3/4 Machine Screw        | 12              |
|    |                        |   |                 | 22 | 15108                  | 5/16-18 x 3/4 Carriage Bolt      | 2               |
| 8  | 104-17-5610            | Ignition Switch (Snap In)                 | 1               | 23 | 15101                  | 1/4-20 Flange Nut                | 2               |
| 9  | X3-4090                | Safety Switch (1 PR)                      | 1               | 24 | 314-0618-255R          | Deflector Motor Right            | 3               |
| 10 | 104-17-5608            | Ignition Switch Key                       | 1               | 25 | ZP17480                | 15 Amp Self-Resetting<br>Breaker | 1               |
| 11 | 101-17-5612            | Safety Switch 2P                          | 3               |    |                        |                                  |                 |
| 12 | 16100                  | Battery Strap                             | 1               | 26 | 314-15-15147           | 5/16" Flat Washer                | 1               |
| 13 | 104-17-2805            | Warning Light                             | 1               | 27 | XP17483                | Oil Sending Wire                 | 1               |

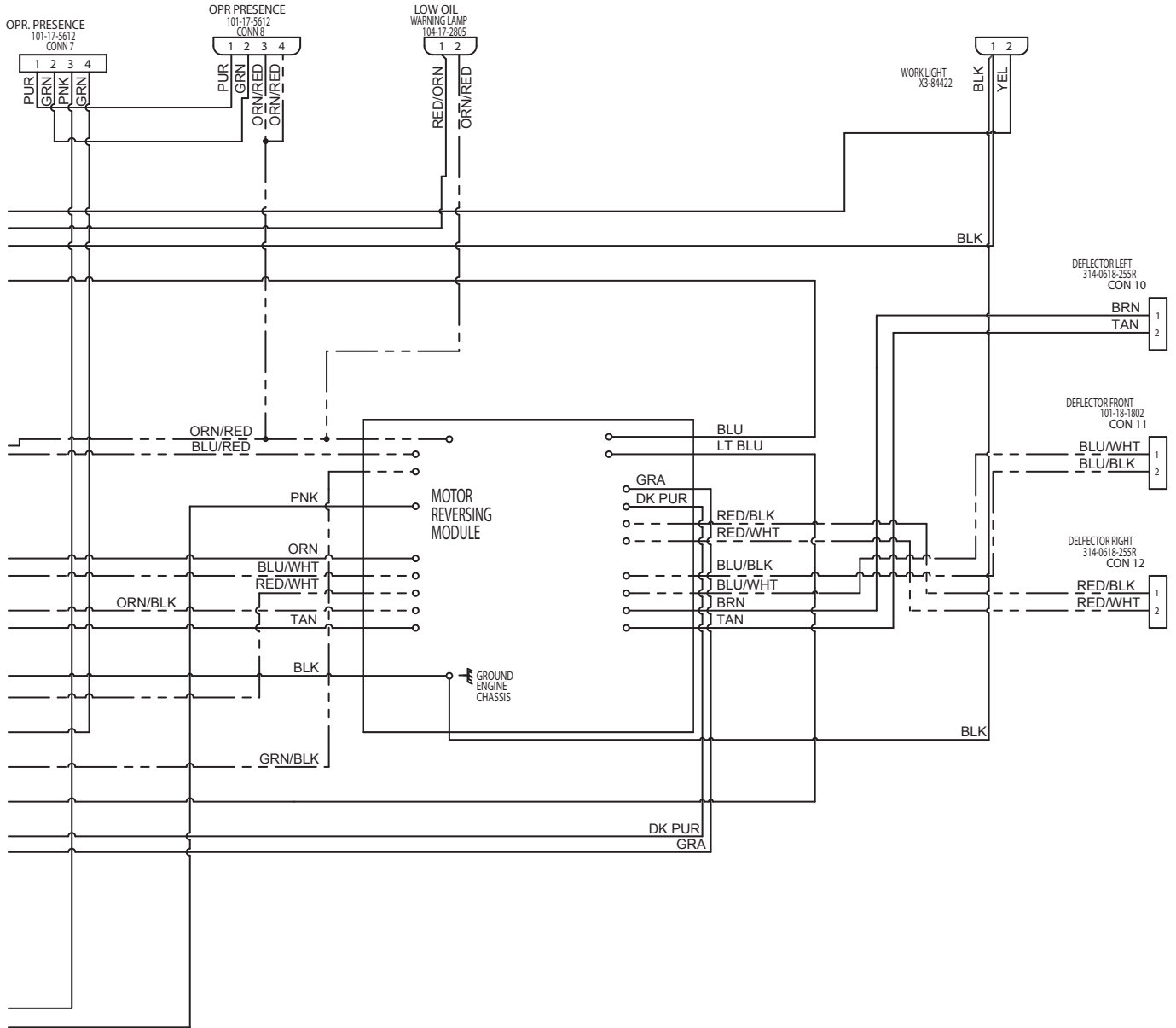
# ELECTRICAL COMPONENTS







# ELECTRICAL SCHEMATIC



**Muskegon, MI**