



QV PUSH Operator's Manual



QV PUSH VACUUM Operator's Manual

QV550V

Beginning Serial #: 051522001

Accessories

ADJUSTABLE HANDLE	VACUUM HOSE KIT
Allows for the handle to be raised or lowered for comfort.	5" (127mm) x 10' (3m) collapsible hose for vacuuming in hard-to-reach areas
P/N 831614	P/N 831018

Debris bags and Filter

(INCLUDED)

DEBRIS BAG SKIRT	STANDARD DEBRIS BAG	HOOD FILTER	DEBRIS AND DUST SOCK
Directs dust away from the operator.	Standard on QV models. For dusty conditions.	Filters out dust from vacuum exhaust.	Traps dust keeping it away from the operator.
P/N 831268	P/N 831613	P/N 831226	P/N 831282

Original Instructions

IMPORTANT- READ CAREFULLY BEFORE USE AND KEEP FOR FUTURE REFERENCE.



CONTENTS

SPECIFICATIONS	3
INSTRUCTION LABELS	4
PACKING CHECKLIST AND ASSEMBLY	5
OPERATION AND BAG CARE	6-7
MAINTENANCE AND TROUBLESHOOTING	8-9
ILLUSTRATED PARTS & PARTS LISTS	10-13

NOT FOR REPRODUCTION



QV PUSH Owner's Manual

SPECIFICATIONS

QV550V

HP	5.0 (3.73 kW)
Engine: Type	10V3320003F1
Engine: Fuel Capacity	3.3 qt. (3.1 L)
Engine: Oil Capacity	0.63 qt. (0.60 L)
Total Unit Weight:	180# (81.6 kg)
Overall Length	63" (1.6m)
Overall Width	33" (0.84m)
Overall Height	51" (1.3 m)
Max. operating slope	20 ⁰

NOT FOR REPRODUCTION



QV PUSH Owner's Manual

INSTRUCTION LABELS

The labels shown below were installed on your BILLY GOAT® QVEU Vacuum. If any labels are damaged or missing, replace them before operating this equipment. Item numbers from the Illustrated Parts List and part numbers are provided for convenience in ordering replacement labels. The correct position for each label may be determined by referring to the Figure and Item numbers shown.

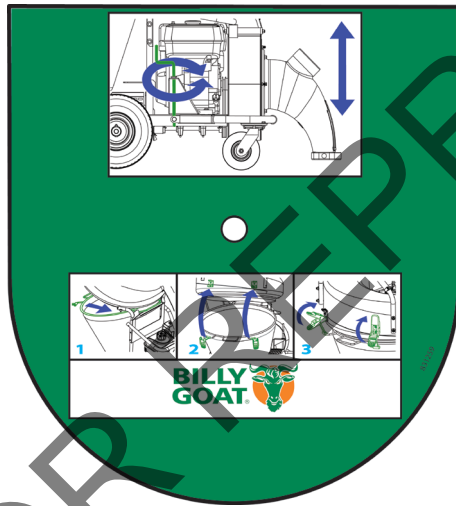
LABEL WARNING
ITEM #35 P/N 831265



LABEL THROTTLE
ITEM #104 P/N 810656



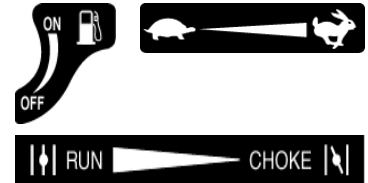
INSTRUCTION LABEL
ITEM # 37 P/N 831259



ENGINE LABELS

BRIGGS & STRATTON

	WARNING
	Read and follow Operating Instructions before running engine.
	Gasoline is flammable. Allow engine to cool at least 2 minutes before fueling.
	Engines emit carbon monoxide, DO NOT run in enclosed area.





QV PUSH Owner's Manual

PACKING CHECKLIST

Your Billy Goat is shipped from the factory in one carton, completely assembled except for the nozzle and handle.



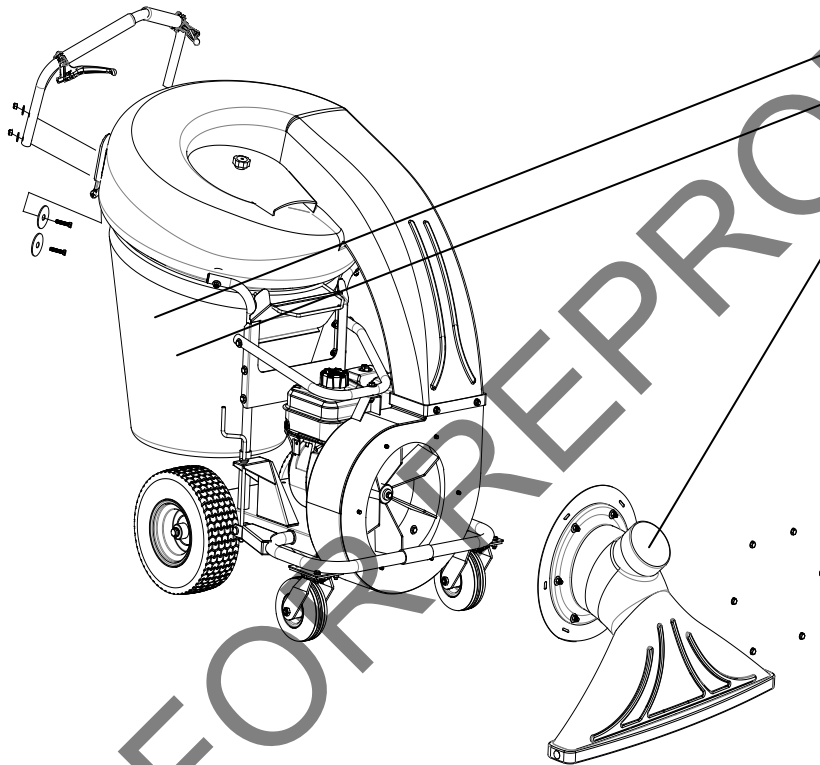
READ all safety instructions before assembling unit.
TAKE CAUTION when removing the unit from the box.



PUT OIL IN ENGINE BEFORE STARTING

PARTS BAG & LITERATURE ASSY

Warranty card P/N- 400972, Operator's Manual P/N-27831516, Declaration of Conformity P/N-100506. General Safety and Warnings Manual P/N-100294



Boxing Parts Checklist

- Debris Bag P/N-831225
- Dust Sock P/N-831268
- Front Nozzle P/N-831606
- Literature Assy P/N-831021
- Screwcap 5/16" -18 x 1 3/4 qty 4
P/N-8041031
- Washer 2" OD x .344 ID qty 4
P/N-810652
- Washer 5/16" Flat qty 4
P/N-8171003
- Nut Lock 5/16" - 18 qty 4
P/N-8160002
- Briggs & Stratton 5.0 HP

ASSEMBLY

NOTE: Items in () can be referenced in the Parts Illustrations and Parts Lists on pages 10-13

1. **REMOVE** the unit from the box. Be careful as not to damage the unit.
2. **REMOVE** the bag and attach the handle to the hood using the hardware from the parts bag. The large washer should be on the inside and the bolt should run from the inside of the hood out. The arch of the handle should be facing to the front of the machine and the cables should not be twisted around each other. *NOTE:* The left cable should run to the right side of the transmission and right cable to the left of the transmission. Cable twisting will interfere with the operation of the machine and will cause premature cable wear.
3. **ATTACH** the front nozzle (item 7) to the housing and secure it with the serrated hex nuts (item 58) located in the parts bag.



QV PUSH Owner's Manual

OPERATION

VACUUM OPERATION

⚠ WARNING: The maximum RPM's on the unit's engine are set. Altering them from the factory settings could potentially damage the unit and void warranty.

VACUUM NOZZLE HEIGHT ADJUSTMENT: Adjust by turning the knob clockwise to increase height and counter-clockwise to lower it. Adjust nozzle height according to surface conditions and debris size. For vacuuming on flat surfaces, set nozzle 1/2" (12.7 mm) to 5/8" (15.8 mm) above ground. Adjust higher for uneven terrain and turf.

FOR MAXIMUM PICKUP: Adjust nozzle close to debris, but without blocking airflow into the nozzle. *NOTE:* Never bury nozzle into debris.

✎ ⚠ CLEARING A CLOGGED NOZZLE & EXHAUST: Turn engine off and wait for impeller to stop completely and disconnect spark plug wire. Wearing durable gloves, remove clog, this may require removing the front nozzle.

⚠ DANGER, the clog may contain sharp materials. Reconnect spark plug wire.

DEBRIS BAG

Debris bags are normal replaceable wear items.

NOTE: Frequently empty debris to prevent bag overloading with more weight than you can lift. Use the dust skirt when debris will be vacuumed in dusty conditions.

DO NOT place bag on or near hot surface, such as engine. Run engine at 1/2 throttle for first 1/2 hour to condition new bag. Your new bag requires a break-in period to condition the pores of the material against premature blockage. The entire bag surface serves as a filter, and must be able to breathe to have good vacuum performance. Be sure engine has come to a complete stop before removing or emptying bag.

HOOD FILTER

Hood filters are normal replaceable wear items. The hood filter is for use in dry dusty conditions only. **DO NOT** get the filter wet. Clean with light compressed air only.

DUST SOCK

Dust socks are normal replaceable wear items. See next page for dust sock care.

DUSTY CONDITIONS

This vacuum is designed for picking up trash, organic material and other similar debris. However, many vacuums are used where dust is mixed with trash. Your unit can intermittently vacuum in dusty areas. Dust is the greatest cause of lost vacuum performance. However, following these rules will help maintain your machine's ability to vacuum in dusty conditions:

- Run machine at idle to quarter throttle.
- The debris bag must be cleaned more frequently. A vacuum with a clean, pillow soft bag will have good pickup performance. One with a dirty, tight bag will have poor pickup performance. If dirty, empty debris and vigorously shake bag free of dust. *Having one or more spare debris bags is a good way to reduce down time while dirty bags are being cleaned.* **DO NOT** leave debris in bag while in storage.



QV PUSH Owner's Manual

DUST SOCK CARE AND MAINTENANCE

Purpose: The dust sock acts as a secondary filter lowering the amount of dust that escapes the bag.

Dust socks are to be used in dry and dusty conditions **ONLY**. Using the dust sock in damp or wet conditions may damage the dust sock and decrease the effectiveness of the filter.

The dust sock may be installed by simply attaching the mating Velcro strips between the bag and the dust sock. Over time the dust sock will begin to fill with dust during use. Periodically remove the dust sock, empty the loose dust out and clean the sock. For a light clean, simply shake the sock, for a deep clean, see below. To remove the sock, simply separate the Velcro.



Dust Sock Care Information:



DO NOT STRIKE THE BAG WITH OR AGAINST OBJECTS



DO NOT SNAG THE BAG



LIGHTLY CLEAN WITH COMPRESSED AIR ONLY, FROM THE OUTSIDE IN. KEEP THE NOZZLE 6-12 INCHES FROM FABRIC



DO NOT GET WET

Dust socks are normal replaceable wear items. Replacement P/N- 831282



QV PUSH Owner's Manual

MAINTENANCE

NOTE: Items in () can be referenced in the Part Illustrations and Part Lists on pages 10-13.

PERIODIC MAINTENANCE

Periodic maintenance should be performed at the following intervals:

Maintenance Operation	Every Use (daily)	Every 5 hrs (daily)	Every 10 Hrs	Every 25 Hrs	Every 50 Hrs
Inspect for loose, worn or damaged parts		•			
Clean debris bag	•				
Check tire pressure	•			•	
Engine (See Engine Manual)					
Check for excessive vibration		•			
Grease zerks					•

Grease: Wheels, Casters, and Shaft Bearings.

Tire air pressure: Check at regular intervals & maintain: Rear SP 13" tires at **20 psi.** (137.9 kPa).

IMPELLER REMOVAL

1. Disconnect spark plug wire.
2. Secure the unit to keep it from moving.
3. Remove the nozzle (item 7) from the housing, then remove the plate it was attached to (item 30).
4. Walk the belt (item 22) off of the lower pulley (item 23) and then slide it off of the impeller groove. If you cannot walk it off of the bottom pulley loosen the bearings (item 24) on the underside this will allow a little more play in the pulley.
5. Slide belt out of belt groove in impeller hub drive pulley.
6. Remove impeller bolt and lock washer.
7. If impeller slides off freely, proceed to (step 12). **(Do not drop impeller).**
8. If impeller does not slide off crankshaft, place two crowbars between impeller and housing on opposite sides. Pry impeller away from engine until it loosens. *A penetrating oil can help loosen a stuck impeller.*
9. Slide impeller off of crank shaft and remove impeller from housing.
10. Reinstall new impeller, new impeller bolt and lock washer in reverse order of removal. *(See the Parts Illustration on pages 9-12 for parts break-down and Parts List on page 10 for proper impeller bolt torque specifications.)*
11. When impeller is installed, slide the belt back into the groove on the hub and walk it back onto the bottom pulley. Retighten the bearings if they were loosened.
12. Reattach nozzle plate and nozzle in reverse order of removal.
13. Reconnect spark plug wire.
14. Check for proper operation.



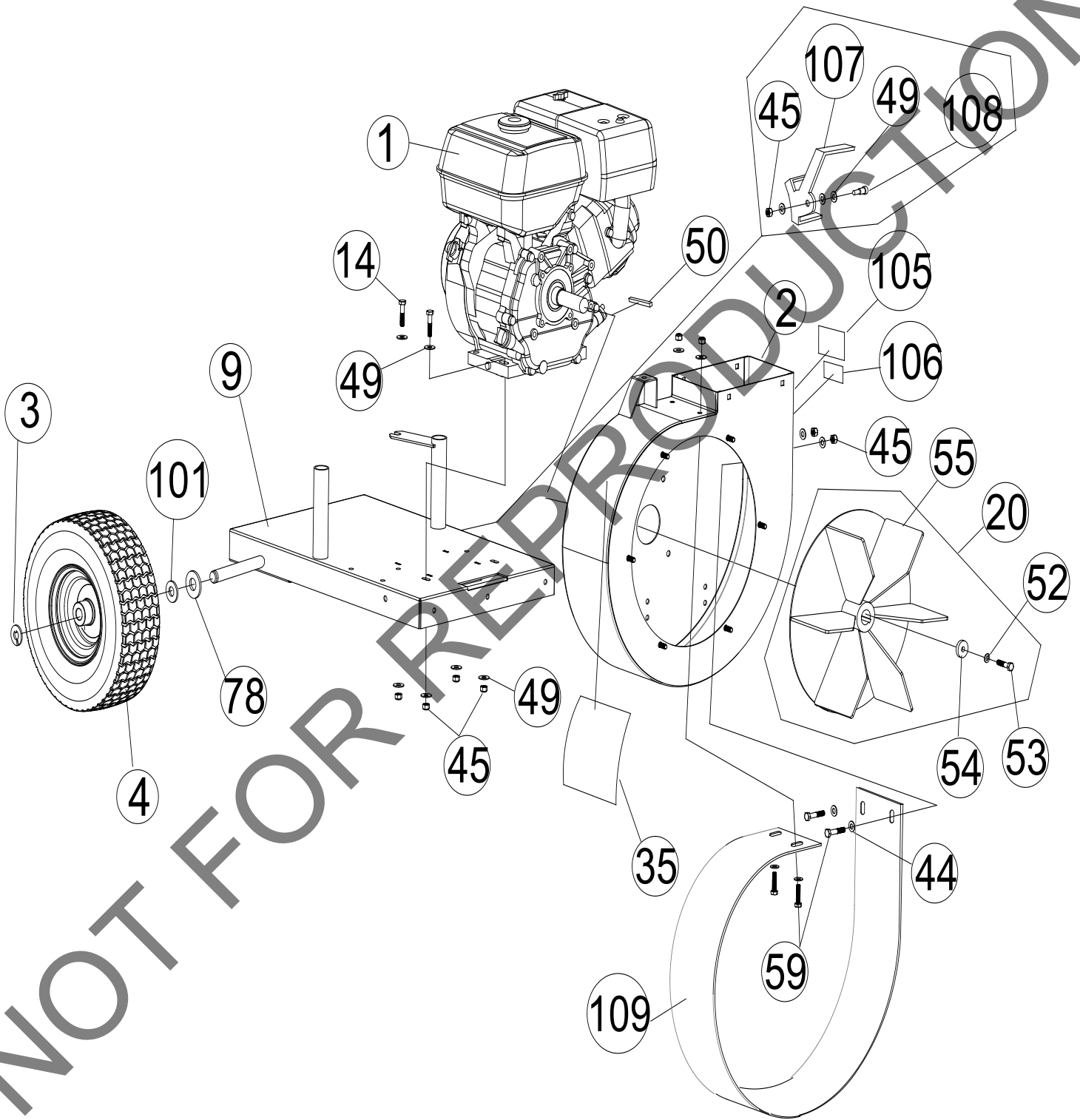
QV PUSH Owner's Manual

TROUBLESHOOTING

Problem	Possible Cause	Solution
Abnormal vibration	Loose or out of balance impeller or loose engine.	Check impeller and replace if required. Check engine.
Will not vacuum or has poor vacuum performance	Dirty debris bag. Nozzle height set too high or low. Hose kit cap missing. Clogged nozzle or exhaust. Excessive quantity of debris.	Clean debris bag. Shake bag clean or wash. Adjust nozzle height. Check for hose kit cap. Unclog nozzle or exhaust. Allow air to feed with debris.
Engine will not start	Stop switch off. Throttle in off position. Engine not in full choke position. Out of gasoline. Bad or old gasoline. Sparkplug wire disconnected. Dirty air cleaner. Low oil (honda only).	Check stop switches, throttle, choke position and gasoline. Connect spark plug wire. Clean or replace air filter. Or contact a qualified service person.
Engine is locked, will not pull over	Debris locked in impeller. Engine problem.	See page 6. Contact a engine service dealer for engine problems.
Nozzle scrapes ground in lowest height setting	Nozzle height out of adjustment.	Adjust nozzle height (See Nozzle height fine adjustment for hard surfaces on page 6.



QV PUSH ENGINE PARTS DRAWING





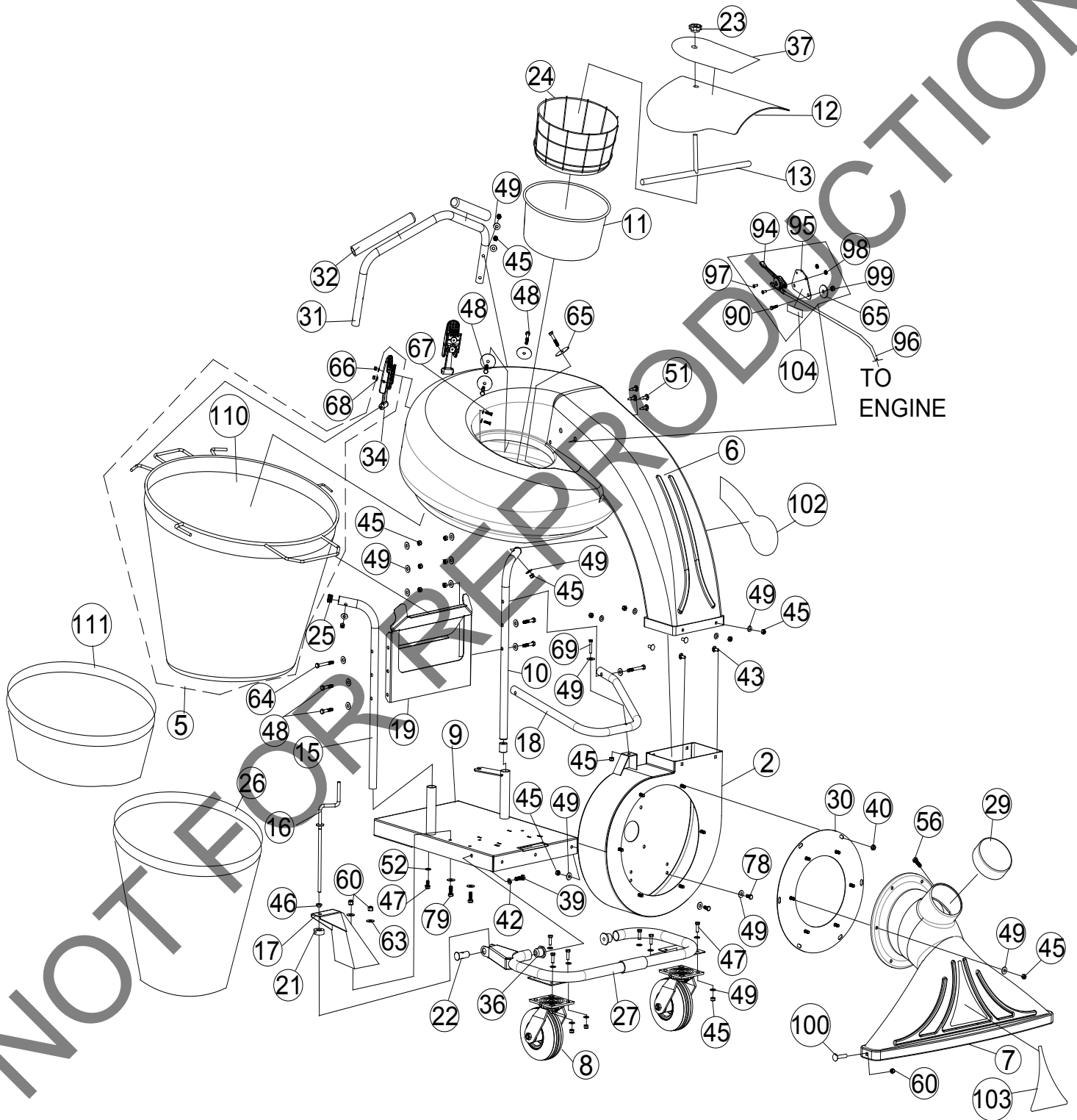
QV PUSH Owner's Manual

QV PUSH ENGINE PARTS LIST

ITEM	DESCRIPTION	QV550V P/N	QTY
1	ENGINE, 160CC, VANGUARD	382531	1
2	HOUSING WA W/LABELS	831600	1
3	SNAP RING 3/4	850230	1
4	WHEEL 13" X 5" PNEU	440054	2
9	ENGINE BASE WA	831106	1
14	SCREWCAP 5/16"-18 X 1 1/2" HCS ZP	8041030	4
20	IMPELLER ASSY	831601	1
35	LABEL WARNING QV	831265	1
44	WASHER 5/16" SAE	8172008	8
45	NUT LOCK 5/16"-18 HEX ZP	8160002	14
49	WASHER 5/16" FLAT	8171003	7
50	KEY 3/16" SQ X 2 1/4"	9201087	1
52	WASHER LOCK 5/16" SPLIT	8177011	1
53	SCREWCAP 5/16"-24 X 2 1/4" GR.8 W/PATCH	831272	1
54	WASHER 1.125 OD X 0.344 ID X 0.25	441150	1
55	IMPELLER 5HP WA (torque 17-22 ft.lbs [23-30 N.m])	831104	1
59	SCREWCAP 5/16"-18 X 3/4" GR 5 HCS ZP	8041026	4
78	WASHER 3/4" SAE	8172015	2
101	WASHER .765 ID X 1.25 OD X .06	850238	2
105	LABEL MADE IN USA	520116	1
106	LABEL PATENT PENDING	500183	1
107	BRACKET BRAKE QV	831295	1
108	BOLT SHOULDER 3/8" X 1/2"	830528	1
109	LINER QV	831283	1



QV PUSH HOOD PARTS DRAWING





QV PUSH Owner's Manual

QV PUSH HOOD PARTS LIST

ITEM	DESCRIPTION	QV550V P/N	QTY
2	HOUSING QV WA W/LABELS	831600	1
5	BAG QV	831612	1
6	HOOD QV	831605	1
7	NOZZLE 32" W/LABELS	831606	1
8	CASTER SWIVEL QV	831201	2
9	ENGINE BASE 5 HP WA SP	831105	1
10	HANDLE LOWER LFT	831404	1
11	HOOD FILTER	831226	1
12	HOOD SCOOP QV PUSH W/LABEL	831604	1
13	ROD FILTER HOLDER QV	831266	1
15	HANDLE LOWER RT	831403	1
16	HEIGHT ADJ ROD	831214	1
17	HEIGHT ADJ BRACKET WA	831110	1
18	HANDLE WISHBONE	831405	1
19	BRACKET HANDLE SUPPORT	831222	1
21	STOP COLLAR	831216	1
22	PIVOT HEIGHT ADJ WA	831117	1
23	KNOB 3/8" - 16 SOLID HUB	811230	1
24	FILTER FRAME	831223	1
25	PLUG TUBE INSERT 1" OD	890132	2
26	DUST SOCK DOUBLE LAYER QV	831282	1
27	FRAME CASTER QV WA	831108	1
29	CAP 5" VINYL BLACK	831211	1
30	PLATE NOZZLE WA QV	831109	1
31	HANDLE UPPER QV	831406	1
32	GRIP 1" OD X 9.5"	430342	2
34	BAG LATCH	840016	2
36	BUSHING FRAME PIVOT	831207	2
37	LABEL INSTRUCTION QV	831258	1
39	SCREWCAP 3/8"-16 X 1 1/4" HCS ZP	8041051	2
40	NUT 5/16-18 SER HEX WSHR FLNG ZP	350346	6
42	WASHER LOCK 3/8" ST MED	8177012	2
43	BOLT CARRIAGE 5/16"-18 X 3/4" ZP	8024039	4
45	NUT LOCK 5/16"-18 HEX ZP	8160002	33
46	BUSING HEIGHT ADJ BRKT QV	831215	1
47	SCREWCAP 5/16"-18 X 1" HCS ZP	8041028	8
48	SCREWCAP 5/16"-18 X 1 3/4" HCS ZP	8041031	10
49	WASHER 5/16" FLAT	8171003	45
51	PLUG SNAP RIVET 0.232 DIA	840114	4
52	WASHER LOCK 5/16" SPLIT	8177011	2
56	SCREW PLASTITE 1/4"-20 X 3/4" HWH ZP	840082	1
60	NUT LOCK 3/8" -16 HEX	8160003	4
63	WASHER 3/8" FLAT	8171004	4
64	SCREWCAP 5/16"-18 2 3/4" HCS ZP	8041035	2
65	WASHER 2" OD X 0.344 ID X 16 GA	810652	8
66	NUT LOCK #10-24 HEX	8155007	4
67	SCREW MACH #10-24 X 3/4"	8059136	4
68	WASHER #10 SAE	8172005	8
69	SCREWCAP 5/16"-18 X 1 1/2"	8041030	1
78	SCREWCAP 5/16"-18 X 3/4" HCS ZP	8041026	4
79	SCREWCAP 3/8"-16 X 1" HCS ZP	8041050	2

ITEM	DESCRIPTION	QV550V P/N	QTY
90	SCREWCAP 1/4"-20 X 3/4"	8041004	2
94	CONTROL THROTTLE	440013	1
95	PLATE THROTTLE	500358	1
96	CABLE THROTTLE	440178	1
97	SCREW MACH HD PHIL #10-24	830514	2
98	NUT LOCK LT #10-24	8164005	2
99	NUT FLANGE 1/4"-20	900453	2
100	BOLT CARRIAGE 3/8"-16 X 1"	8024058	2
102	LABEL BADGING QV	831260	2
103	LABEL NOZZLE QV	831261	1
104	LABEL THROTTLE	810656	1
110	BAG QV NO CLASPS SERVICE	831613	1
111	DUST SKIRT	831268	1