



# Parts Manual

Mfg. No: 5901808-X3000  
X3000, Hurricane Series Stand-On  
Debris Blower



5109061 - Tire, Debris Blower, Pavement Tire 20.5 X 8.0-10. ....

Not For  
Reproduction

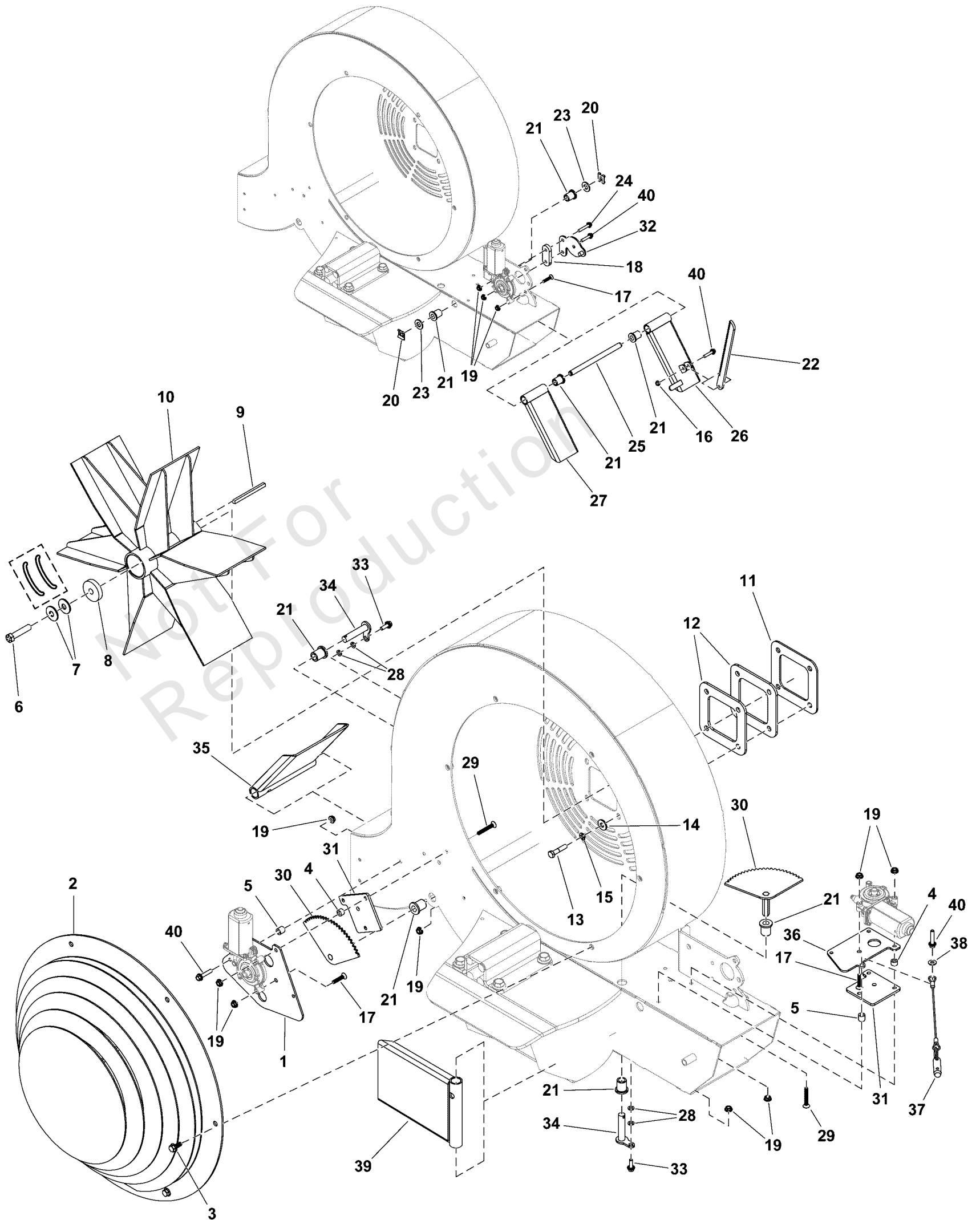
<b>Model Components</b>	<b>Page</b>
Blower Group.....	4
Decal Group - Brand and Model.....	6
Decal Group - Safety and Operational.....	8
Electrical Group S/N: 4002219158 and Below.....	10
Electrical Group S/N: 4002219159 and Above.....	12
Electrical Schematic S/N: 4002219158 and Below.....	14
Electrical Schematic S/N: 4002219159 and Above.....	16
Engine Group S/N: 4002350150 and Below.....	18
Fuel Tank and Hose Group.....	20
Handle Bar Group.....	22
Hydraulic Group.....	24
Instrument Control Panel Group.....	26
Main Frame Group.....	28
Motion Control Group.....	30
Parking Brake Group S/N: 4002219158 and Below.....	32
Parking Brake Group S/N: 4002219159 and above.....	34
Wheel and Tire Group.....	36
Torque Specification Chart.....	38

Not For  
Reproduction

# Blower Group

Note: Unless noted otherwise, use the standard torque specifications

Mfg. No: 5901808-X3000



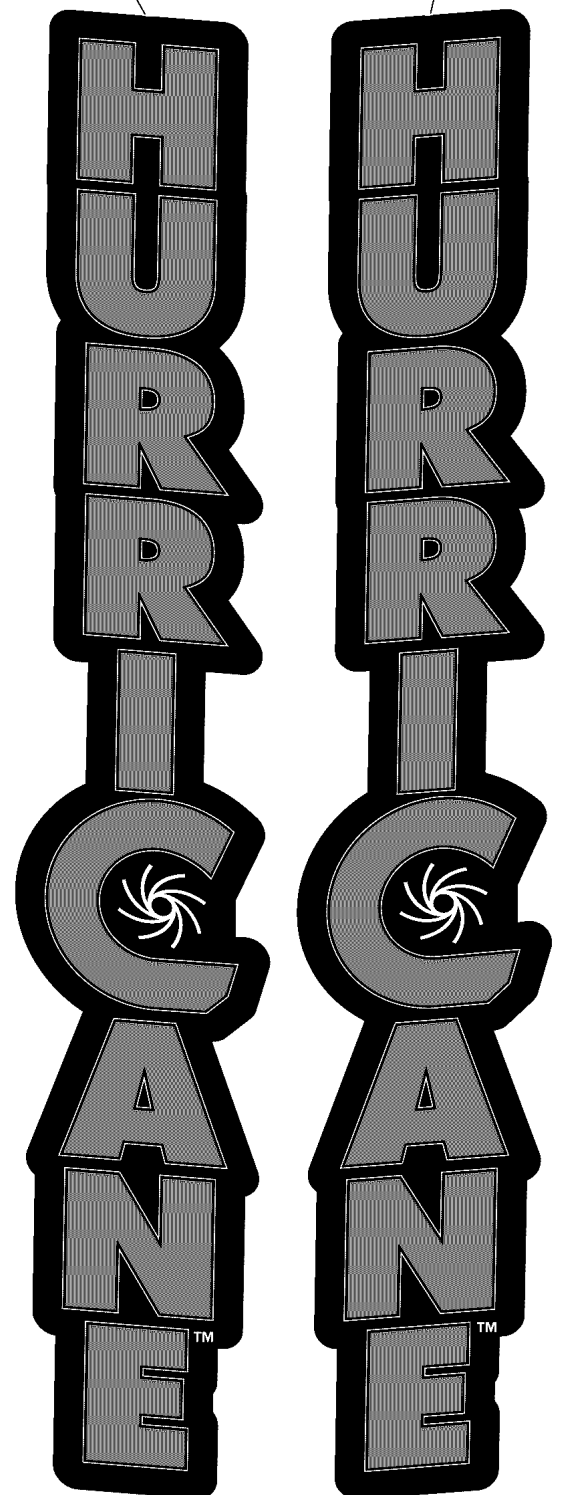
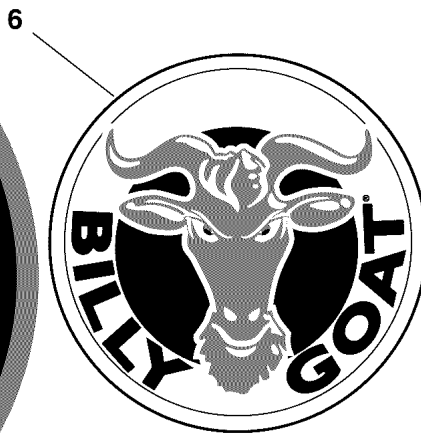
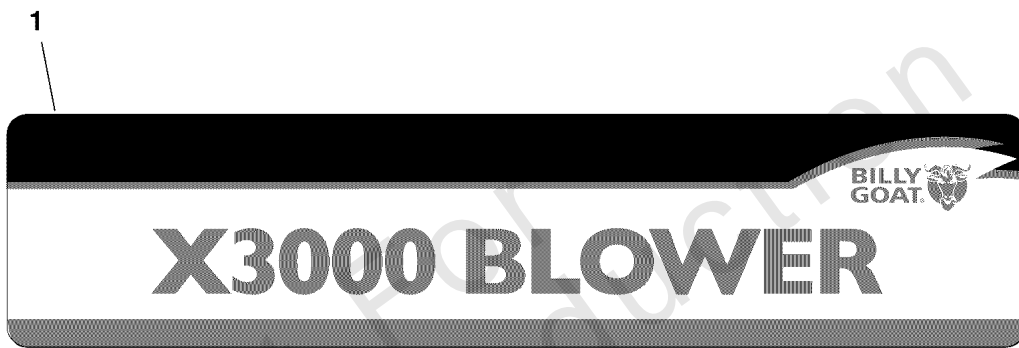
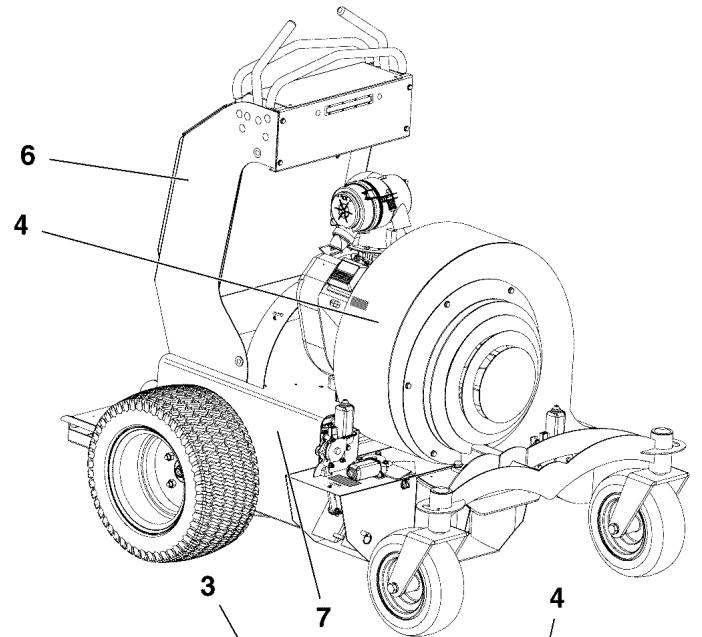
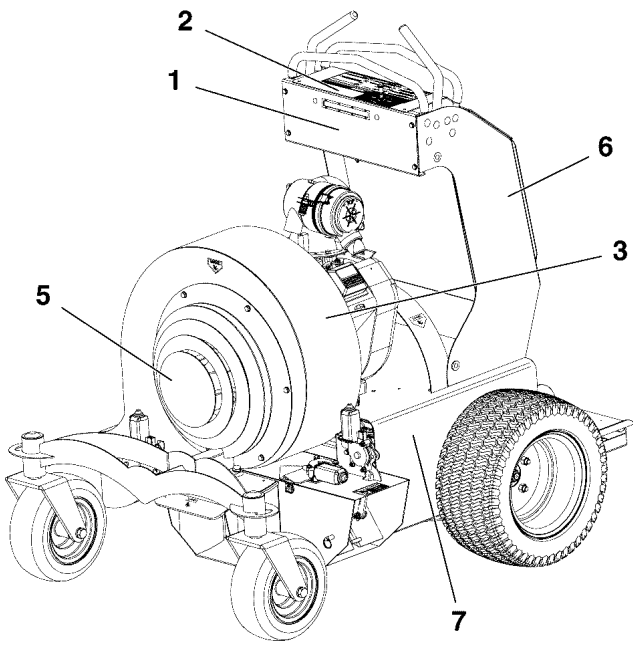
## Blower Group

REF NO	PART NO	QTY	DESCRIPTION
1	5107338AFS	1	PLATE -(Plate only, motor shown for reference only.)
2	5418562AFS	1	COVER
3	703354	6	SCREW, 5/16-18
4	5107396FS	4	SPACER
5	5106902FS	3	SPACER
6	5025016X16FS	1	BOLT -(Torque impeller mounting bolt to 65 ft-lbs (88 Nm))
7	5025585YP	2	BELLEVILLE WASHER
8	5106924FS	1	WASHER
9	5106925FS	1	KEY
10	5419589FS	1	IMPELLER
11	5107364FS	1	PLATE, SPACER
12	5107363FS	2	PLATE, SPACER
13	5025025X12YP	4	BOLT
14	5025337FS	5	WASHER
15	5025170SM	4	WASHER, 5/16" LOCK
16	5025095SM	1	NUT, 1/4-20 HEX NYLON
17	5106874FS	4	SCREW
18	5107334AAFS	1	PLATE, Spacer
19	5025126FS	15	NUT
20	5106951FS	2	CLIP
21	5106943FS	8	BUSHING
22	5107335FS	1	PLATE
23	5025158SM	2	WASHER, 1/2" SAE
24	5106873FS	1	BOLT
25	5107336FS	1	ROD, Support
26	5107773FS	1	DEFLECTOR
27	5107771FS	1	DEFLECTOR
28	5025169FS	4	WASHER
29	5106903FS	4	SCREW
30	5107339AAFS	2	DEFLECTOR
31	5107332AAFS	1	PLATE, SPACER
32	5107333FS	1	KEEPER
33	5106872FS	2	BOLT
34	5107337FS	2	PIN
35	5107493FS	1	DEFLECTOR
36	5107329AFS	1	PLATE
37	5107886FS	1	PIN
38	703332	1	WASHER
39	5107467FS	1	DEFLECTOR
40	5106919FS	5	BOLT

# Decal Group - Brand and Model

Note: Unless noted otherwise, use the standard torque specifications

Mfg. No: 5901808-X3000



## *Decal Group - Brand and Model*

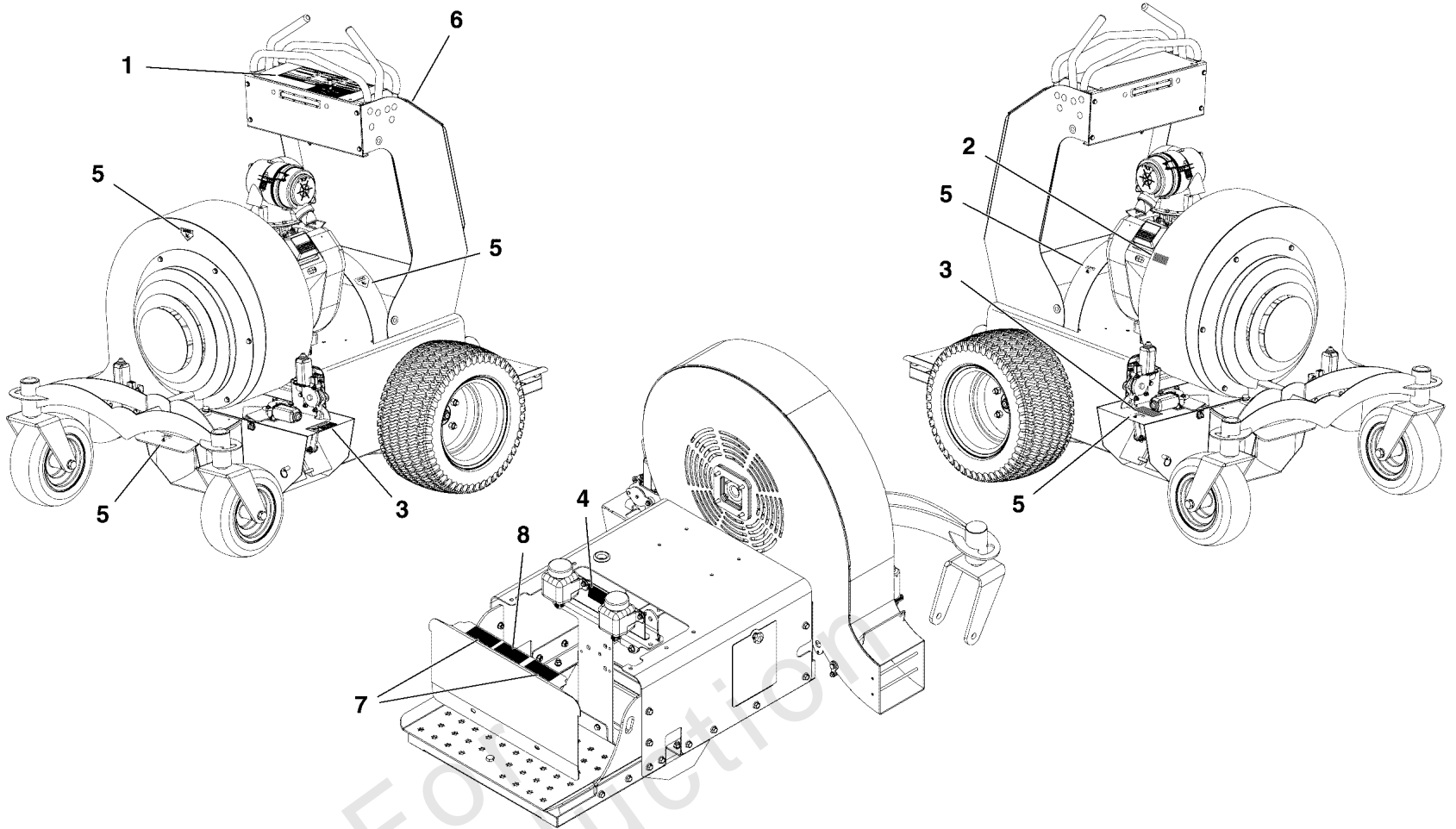
REF NO	PART NO	QTY	DESCRIPTION
1	5107411	1	DECAL, X3000 BADGE
2	5107413	1	DECAL, X3000 TOP PANEL
3	5110336	1	DECAL, X3000 HURRICANE_VERT, LH
4	5110340	1	DECAL, X3000 HURRICANE_VERT, RH
5	5110337	1	DECAL, X3000 FRONT LOGO
6	5107557	2	LABEL, PRODUCT DECAL LG CIRCLE
7	80082701FS	2	DECAL, BRAND

Not For Reproduction

# Decal Group - Safety and Operational

Note: Unless noted otherwise, use the standard torque specifications

Mfg. No: 5901808-X3000



1

**DANGER**  
**WARNING**

- DO NOT SMOKE WHILE REFUELING. DO NOT FILL TANK WHILE ENGINE IS RUNNING OR WHILE ENGINE IS HOT.
- KEEP BYSTANDERS AWAY.
- READ AND UNDERSTAND THE OWNER'S MANUAL. PAY PARTICULAR ATTENTION TO ALL SECTIONS REGARDING SAFETY.
- WARNING: THROWN OBJECTS CAN CAUSE SERIOUS INJURY.
- ALWAYS WEAR HEARING AND EYE PROTECTION.
- BEFORE PERFORMING ANY SERVICE OR MAINTENANCE, DISCONNECT SPARK PLUG WIRE. MAKE SURE THROTTLE IS IN STOP POSITION.
- USE EXTREME CAUTION OPERATING ON SLOPES. MOVE SLOWLY AND AVOID SUDDEN OR JERKY MOVEMENTS.
- WARNING: IMPROPER USE OR CARE OF THIS BLOWER OR FAILURE TO WEAR PROPER PROTECTION CAN RESULT IN SERIOUS INJURY.
- DANGER: KEEP HANDS AND FEET AWAY FROM INTAKE AND DISCHARGE AREA. ROTATING FAN WILL CAUSE SERIOUS INJURY.
- WARNING: TO PREVENT FIRE, KEEP ENGINE AND PUMP COMPARTMENTS CLEAN, ESPECIALLY IN EXHAUST AREA.

3

**CAUTION**  
**PINCH POINT**

7

**TRANSAXLE BYPASS VALVE**  
**PULL CABLE UP AND SIDWAYS TO ENGAGE BYPASS**  
**DO NOT PUSH OR TOW MACHINE WITHOUT FIRST ENGAGING THE TRANSAXLE BYPASS. TRANSAXLE DAMAGE MAY OCCUR.**

2

8

**EMERGENCY BRAKE RELEASE**  
**LIFT LEVER**

5

**DANGER**  
**KEEP HANDS AND FEET AWAY**

4

**HYDROSTATIC OIL FILL**  
**USE ONLY MOBIL 1 15W-50 SYNTHETIC**  
**DO NOT OVERFILL**

6

**FORWARD**  
**REVERSE**  
**FUEL FILL (GASOLINE ONLY)**  
**OIL ALERT**  
**FORWARD**  
**REVERSE**  
**THROTTLE**  
**THROTTLE**  
**PARKING BRAKE**  
RED DOTTED LINE = BRAKE AUTOMATICALLY ENGAGED  
GRAY FILL = BRAKE AUTOMATICALLY DISENGAGED



## ***Decal Group - Safety and Operational***

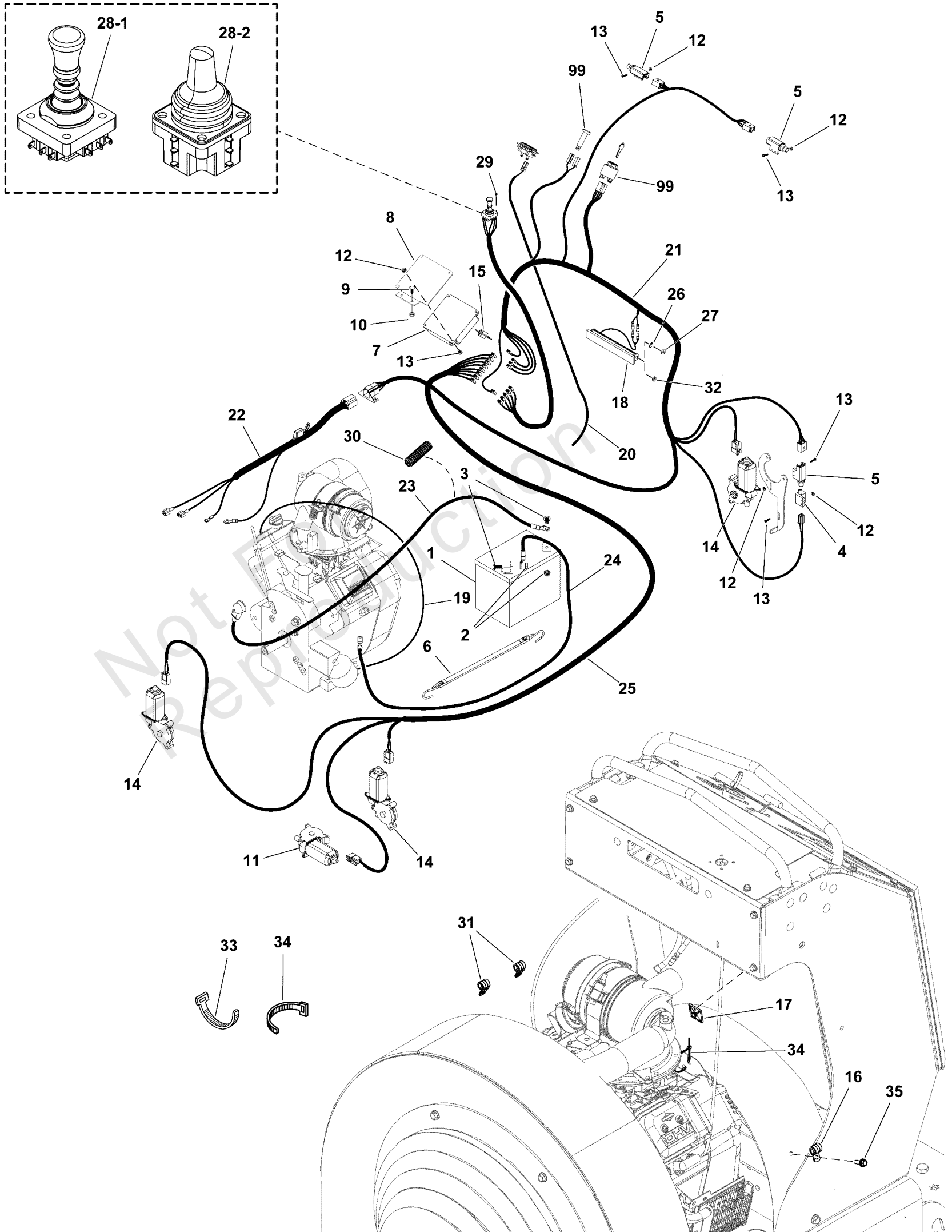
<b>REF NO</b>	<b>PART NO</b>	<b>QTY</b>	<b>DESCRIPTION</b>
1	5107509	1	DECAL, DASH, JOYSTICK
2	5106771	1	DECAL, HOT
3	5106773	2	DECAL, PINCH
4	5106774	1	DECAL, HYDRO
5	5106775	5	DECAL, DANGER
6	5106776	1	DECAL, DASH CONTROLS
7	5106777	2	DECAL, TRANS BYPASS
8	5106778	1	DECAL, EMERGENCY BRAKE RELEASE

Not For Reproduction

# Electrical Group S/N: 4002219158 and Below

Note: Unless noted otherwise, use the standard torque specifications

Mfg. No: 5901808-X3000



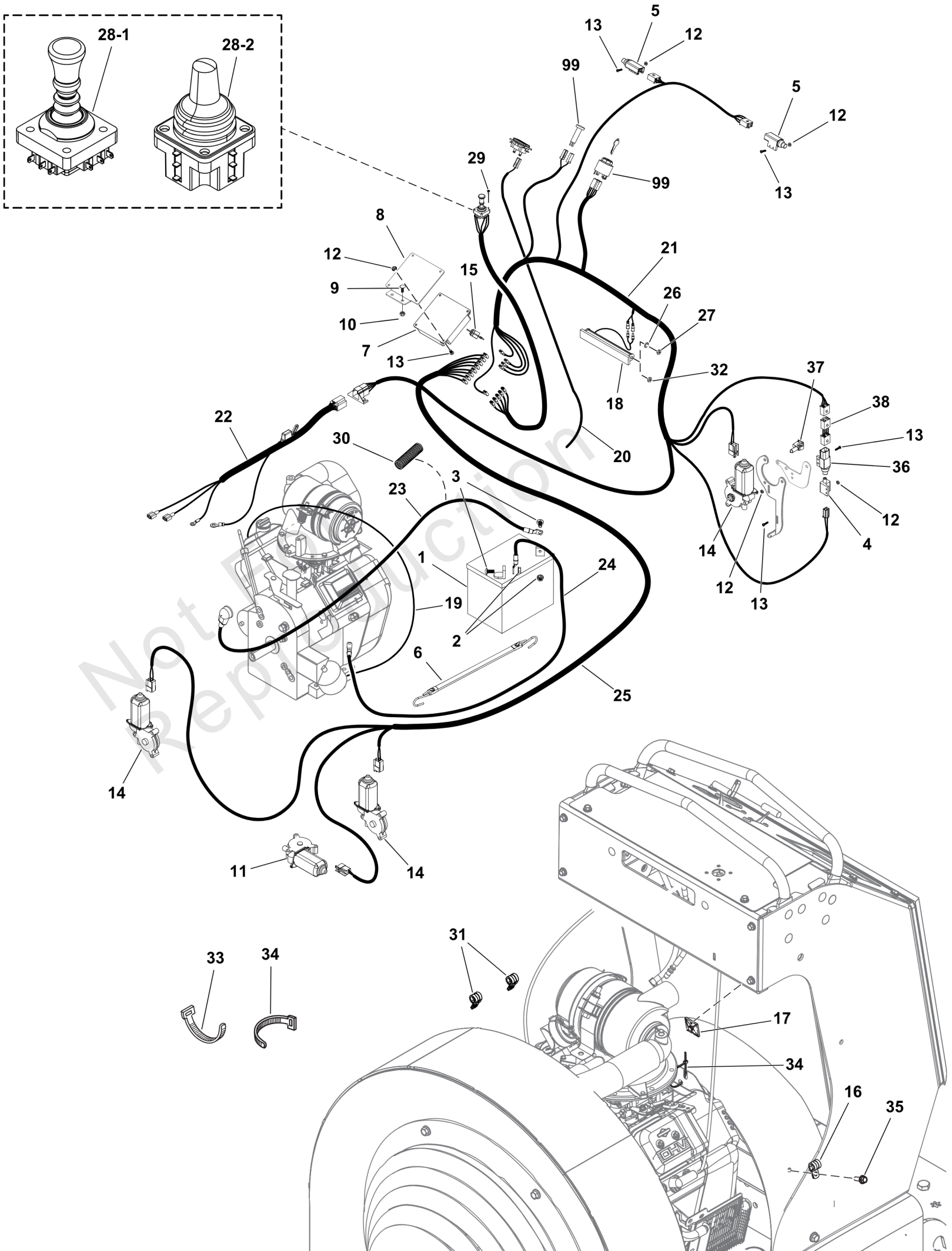
## Electrical Group S/N: 4002219158 and Below

REF NO	PART NO	QTY	DESCRIPTION
1	-----	1	BATTERY, 11U1L, 350 CCA -(BCIU1, 350 CCA)
2	5025127	2	NUT, 5/16-18 HEX SERRATED FLANGE (SMALL)
3	80003531	2	SCREW, 5/16-18x0.750, GR5, WHIZ-LOCK, ZC
4	5021769	1	SWITCH, PLUNGER, N.C.
5	5106950	3	SWITCH, SAFETY(2P)
6	5106918	1	STRAP, BATTERY
7	5601264	1	KIT, RELAY, CONTROL MODULE -(Includes reference #15.)
8	5107407AA	1	BRACKET, RELAY MOUNT - BLK
9	80003518	2	BOLT, 1/4-20X0.750, GR5, STD NECK, SQ, ZC/CL
10	5025126	4	NUT, 1/4-20 HEX SERR. FLANGE
11	5106953	1	MOTOR, DEFLECTOR, LEFT
12	80013127	12	NUT, #10-32, HEX, KEPS, ZC/CL
13	5106875	12	SCREW, #10-32 X 3/4, ALLEN, SS
14	5106952FS	3	DEFLECTOR, Motor
15	5107310	1	CIRCUIT BREAKER, 15A A-RESET
16	5107053	1	CLAMP, VINYL INSULATED, .50
17	5107270	2	MOUNT, ZIPTIE, X3
18	5420644	1	HEADLIGHT ASSY - LED
19	5107888	1	WIRE HARNESS, OIL PRESSURE SWITCH, X3
20	5107043	1	WIRE HARNESS, TACH X3, Z3 -(End without terminal is wrapped around spark plug wire and secure with wire tie.)
21	5107275	1	WIRE HARNESS, MAIN, X3 JOYSTICK
22	5107272	1	WIRE HARNESS, VANGUARD 23HP
23	5107244	1	BATTERY CABLE, POS, 24.69, 5/16-5/16
24	5107245	1	BATTERY CABLE, NEG, 13.50, 5/16-3/8
25	5107276	1	WIRE HARNESS, DEFLECTOR, X3 JOYSTICK
26	5025673	2	WASHER, 5MM, STAR, CZ -(For headlights with 5MM studs)
27	5025672	2	NUT, HEX, M5X.8MM, NYLON INSERT -(For headlights with 5MM studs)
28-1	5601265	1	KIT, JOYSTICK UPDATE -(S/N: 4001275566 and below)
28-2	5108766	1	JOYSTICK ASSEMBLY, DEBRIS BLOWER -(S/N: 4001275567 and above)
29	5106917	4	SCREW, #8-32 X 3/8, ALLEN, SS
30	5050927X17P5	2	WIRE LOOM, 3/8 ID X 17.5 IN
31	5107987	2	CLAMP, VINYL INSULATED, .75
32	5025669	2	NUT, HEX, M6-1, NYLON INSERT -(For headlights with 6MM studs)
33	5021029	3	TIE, SELF-LOCKING, 12"
34	5021030	9	TIE, SELF-LOCKING, 6"
35	5106872	2	BOLT, 1/4-20 X 3/4, FLANGE, CZ
99	-----	0	Refer to: Instrument Control Panel Group

# Electrical Group S/N: 4002219159 and Above

Note: Unless noted otherwise, use the standard torque specifications

Mfg. No: 5901808-X3000



## Electrical Group S/N: 4002219159 and Above

REF NO	PART NO	QTY	DESCRIPTION
1	-----	1	BATTERY, 11U1L, 350 CCA -(BCIU1, 350 CCA)
2	5025127SM	2	NUT, 5/16-18 HEX SERR
3	703354	2	SCREW, 5/16-18
4	5021769SM	1	SWITCH, PLUNGER, N.C.
5	5106950FS	2	SWITCH
6	5106918FS	1	STRAP, Battery
7	5601264	1	KIT, RELAY, CONTROL MODULE -(Includes reference #15.)
8	5107407AAFS	1	MOUNT
9	703575	2	BOLT, 1/4-20X.750, SQ
10	5025126FS	4	NUT
11	5106953FS	1	MOTOR
12	1928919SM	12	NUT-HEX & WASHER ASMY
13	5106875FS	12	SCREW (#10-32 X 3/4, ALLEN, SS)
14	5106952FS	3	DEFLECTOR, Motor
15	5107310FS	1	BREAKER, CIRCUIT, 15A
16	5107053	1	CLAMP, VINYL INSULATED, .50
17	5107270FS	2	MOUNT
18	84006903	1	HEADLIGHT ASSEMBLY
19	5107888FS	1	HARNESS, Wiring
20	5107043FS	1	HARNESS, WIRING -(End without terminal is wrapped around spark plug wire and secure with wire tie.)
21	5107275FS	1	HARNESS, Wiring
22	5107272FS	1	HARNESS, WIRING
23	5107244FS	1	CABLE, BATTERY, RED
24	5107245FS	1	CABLE, BATTERY, BLACK
25	5107276FS	1	HARNESS, WIRING
26	5025673	2	WASHER, 5MM, STAR, CZ -(For headlights with 5MM studs)
27	5025672	2	NUT, HEX, M5X.8MM, NYLON INSERT -(For headlights with 5MM studs)(Torque headlight mounting nut to 16-19 in-lbs.)
28-1	5601265	1	KIT, JOYSTICK UPDATE -(S/N: 4001275566 and below)
28-2	5108766FS	1	KIT, Joystick -(S/N: 4001275567 and above)
29	5106917	4	SCREW, #8-32 X 3/8, ALLEN, SS
30	5050927X17P5	2	WIRE LOOM, 3/8 ID X 17.5 IN
31	5107987FS	2	CLAMP
32	5025669	2	NUT, HEX, M6-1, NYLON INSERT -(For headlights with 6MM studs)
33	5021029SM	3	TIE, Cable 11" Long
34	5021030SM	9	TIE WRAP, 5-1/2" LONG
35	5106872FS	2	BOLT
36	84008626	1	SWITCH, Sealed
37	5104736FS	1	CLIP
38	84008627	1	WIRE HARNESS, JUMPER, BRAKE SWITCH
99	-----	0	Refer to: Instrument Control Panel Group

# Electrical Schematic S/N: 4002219158 and Below

Note: Unless noted otherwise, use the standard torque specifications

Mfg. No: 5901808-X3000

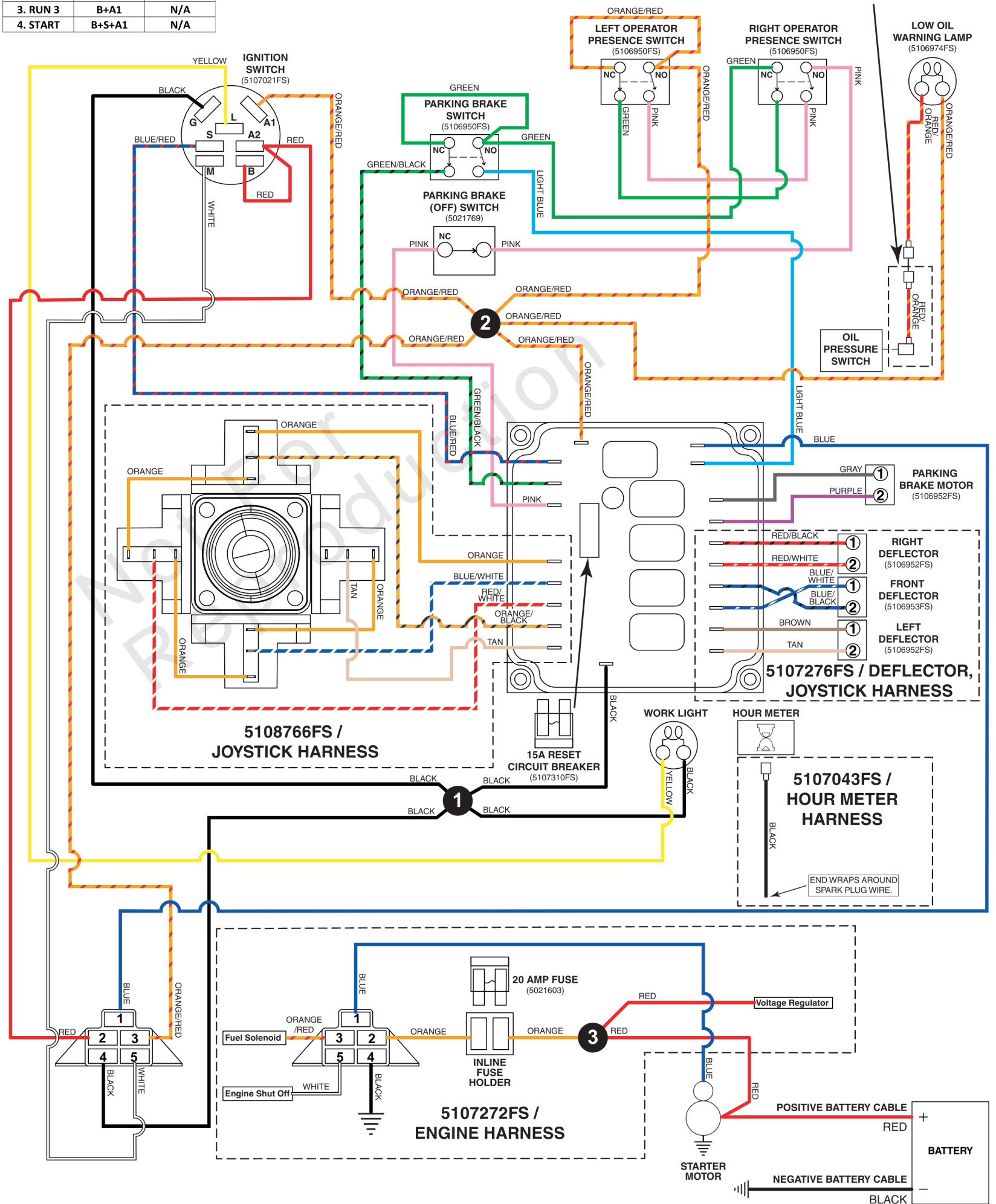
## 5107275FS / MAIN WIRE HARNESS - BRIGGS & STRATTON 386447 ENGINES

(If internal schematic of the switch is not shown, the image of the switch represents the back view of the connector as it is connected to the switch.)

5107275A

IGNITION SWITCH		
POSITION	CONTACT 1	CONTACT 2
1. OFF	M+G+A1	N/A
2. RUN 1	B+A1	L+A2
3. RUN 3	B+A1	N/A
4. START	B+S+A1	N/A

### 5107888FS OIL PRESSURE SWITCH HARNESS



**Electrical Schematic S/N: 4002219158 and Below**

REF NO	PART NO	QTY	DESCRIPTION
5107275FS	5107275FS	1	HARNESS, Wiring
5107888FS	5107888FS	1	HARNESS, Wiring
5108766FS	5108766FS	1	KIT, Joystick
5107276FS	5107276FS	1	HARNESS, WIRING
5107043FS	5107043FS	1	HARNESS, WIRING
5107272FS	5107272FS	1	HARNESS, WIRING

Not For Reproduction

# Electrical Schematic S/N: 4002219159 and Above

Note: Unless noted otherwise, use the standard torque specifications

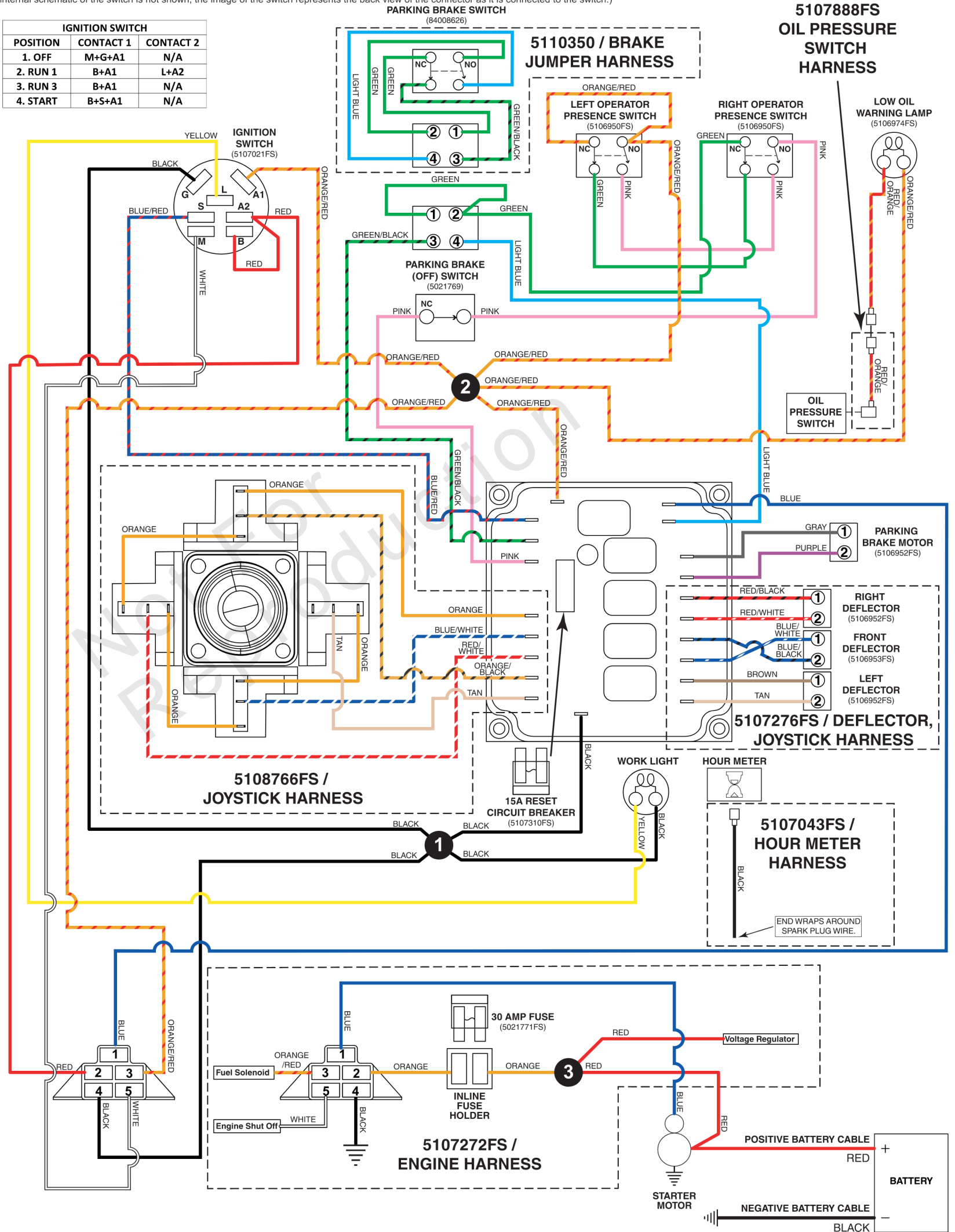
Mfg. No: 5901808-X3000

## 5107275FS / MAIN WIRE HARNESS - BRIGGS & STRATTON 386447 ENGINES

(If internal schematic of the switch is not shown, the image of the switch represents the back view of the connector as it is connected to the switch.)

5107275B

IGNITION SWITCH		
POSITION	CONTACT 1	CONTACT 2
1. OFF	M+G+A1	N/A
2. RUN 1	B+A1	L+A2
3. RUN 3	B+A1	N/A
4. START	B+S+A1	N/A





## Electrical Schematic S/N: 4002219159 and Above

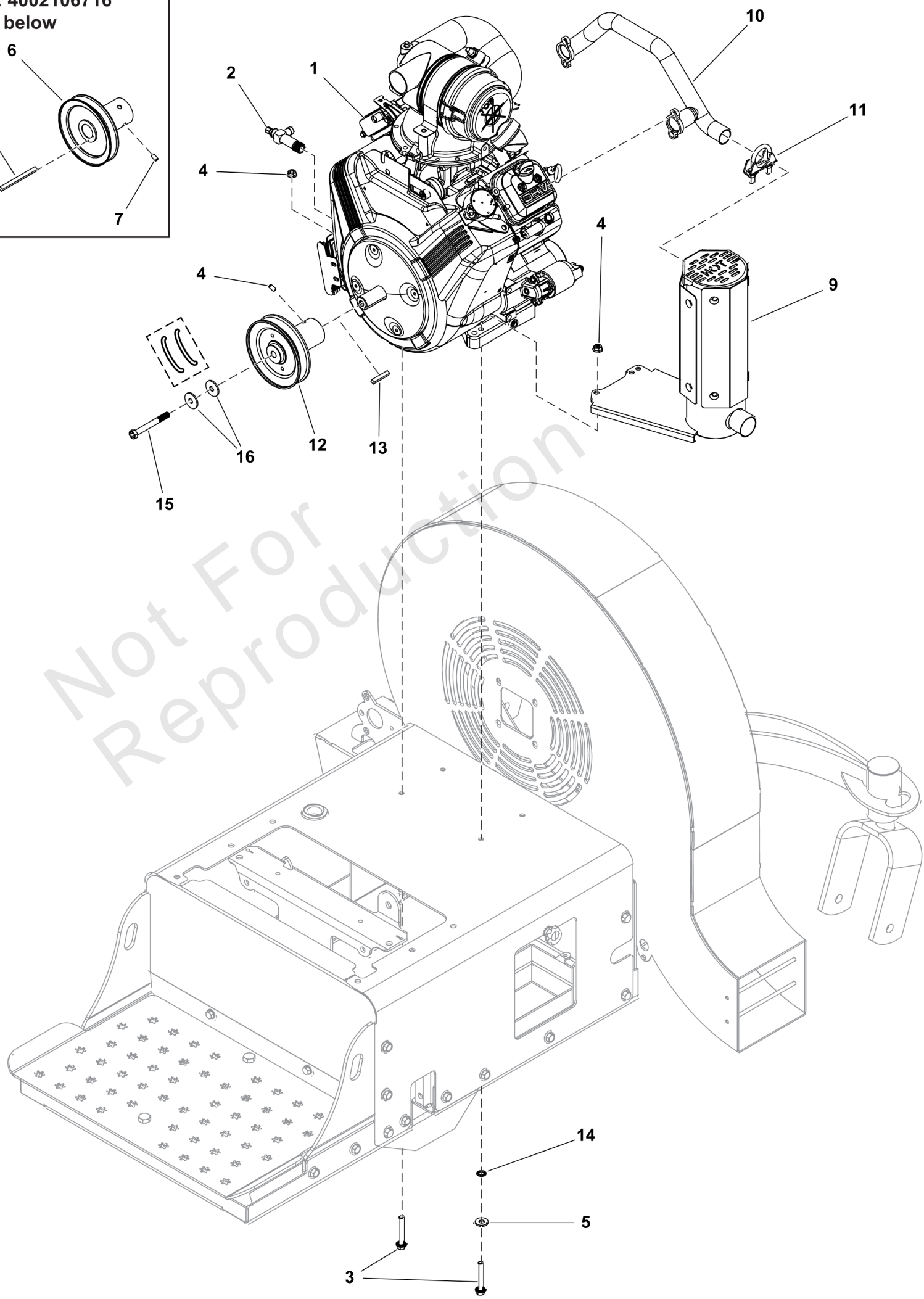
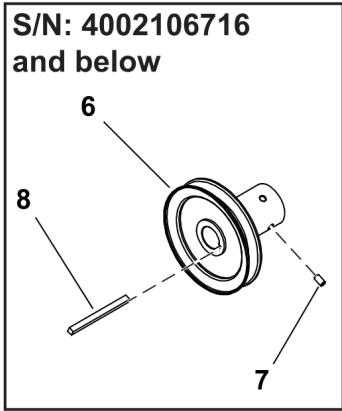
REF NO	PART NO	QTY	DESCRIPTION
5107275FS	5107275FS	1	HARNESS, Wiring
5107888FS	5107888FS	1	HARNESS, Wiring
5107276FS	5107276FS	1	HARNESS, WIRING
5107043FS	5107043FS	1	HARNESS, WIRING
5108766FS	5108766FS	1	KIT, Joystick
5107272FS	5107272FS	1	HARNESS, WIRING
5110350	84008627	1	WIRE HARNESS, JUMPER, BRAKE SWITCH
5107310FS	5107310FS	1	BREAKER, CIRCUIT, 15A
5021771FS	5021771FS	1	FUSE

Not For Reproduction

# Engine Group S/N: 4002350150 and Below

Note: Unless noted otherwise, use the standard torque specifications

Mfg. No: 5901808-X3000



## Engine Group S/N: 4002350150 and Below

REF NO	PART NO	QTY	DESCRIPTION
1	-----	1	ENGINE, HORIZONTAL SHAFT, Briggs & Stratton, 386447 -(Refer to Note: *)
2	5107284FS	1	VALVE, OIL DRAIN SHUT OFF
3	5107304FS	4	BOLT
4	5025127SM	4	NUT, 5/16-18 HEX SERR
5	5025337FS	1	WASHER
6	5601378	1	KIT, DRIVE PULLEY, FB2000/X3000 -(S/N: 4002106716 and below)
7	5107269FS	2	SET SCREW
8	5106925FS	1	KEY -(S/N: 4002106716 and below)
9	84011462	1	KIT, MUFFLER BRACKET -(North American Models)
9	84012301	1	KIT, MUFFLER BRACKET -(CE Models)
10	5109325FS	1	MANIFOLD
11	5107405FS	1	CLAMP, MUFFLER
12	84008751	1	PULLEY -(S/N: 4002106717 and above)
13	5022726YP	1	KEY 1/4 SQ X 1 1/2 -(S/N: 4002106717 and above)
14	5025188SM	1	WASHER, 5/16" INT. TO
15	01X144MA	1	BOLT, 3/8-24 NF x 3-1/4" Hex Head, GR 8 -(S/N: 4002106717 and above)
16	5025693FS	2	WASHER, Beveled -(S/N: 4002106717 and above)

---

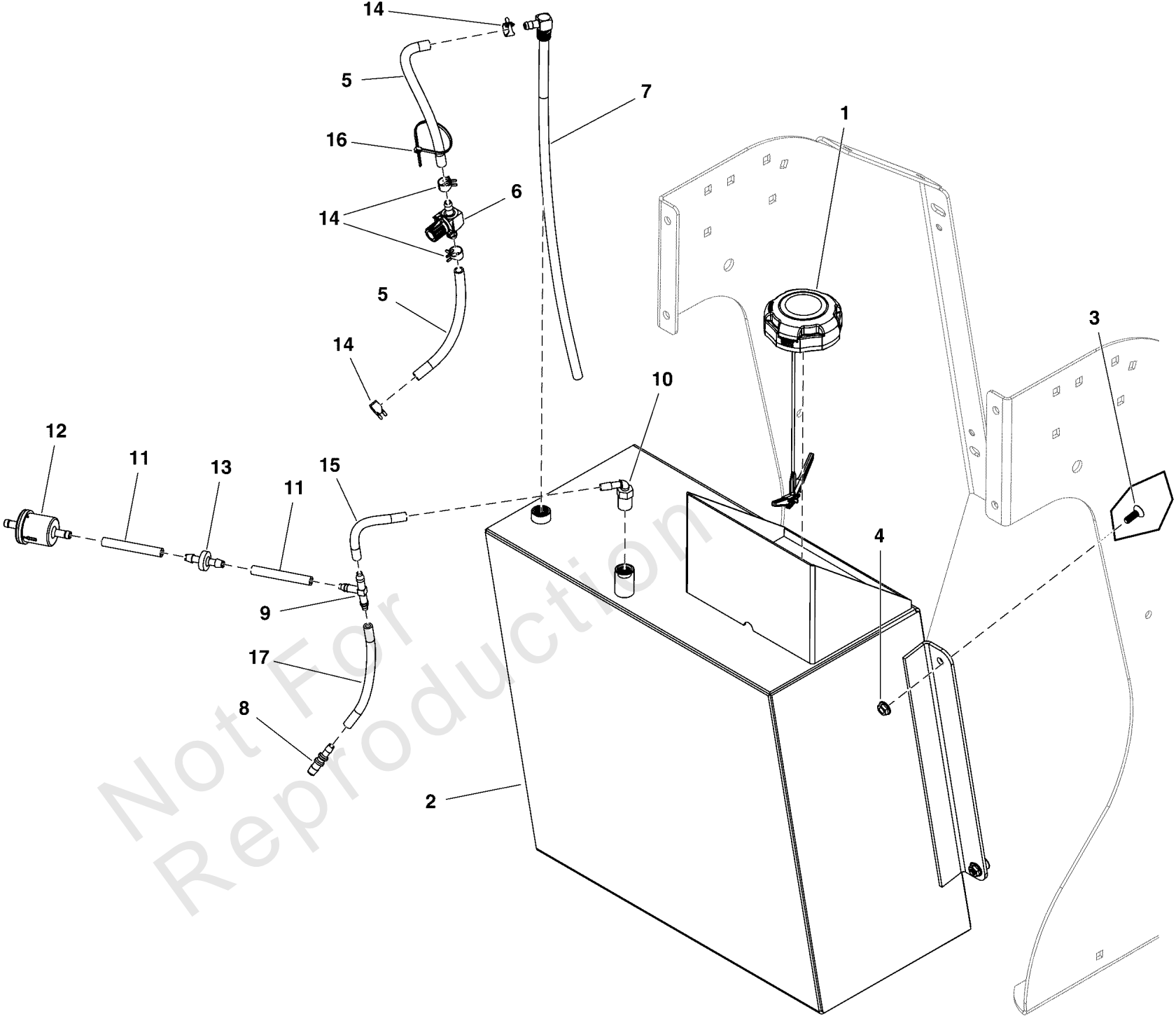
**Footnotes:**

Note: \*See engine identification tag for specific model-type-trim number).

# Fuel Tank and Hose Group

Note: Unless noted otherwise, use the standard torque specifications

Mfg. No: 5901808-X3000



## Fuel Tank and Hose Group

REF NO	PART NO	QTY	DESCRIPTION
1	5107316	1	FUEL CAP, 2.0, NON VENTED
2	5418869	1	WELD, FUEL TANK, BLOWER -(S/N: 4001291676 and below)
2	5420219	1	ASSM, FUEL TANK, BLOWER -(S/N: 4001291677 and above)(Refer to Note: *)
3	5106863	4	SCREW, 1/4-20 X 3/4, FPHMS, SS
4	5025126	4	NUT, 1/4-20 HEX SERR. FLANGE
5	5050831X6	2	HOSE, 1/4" FUEL, 6" LONG
6	5107072	1	VALVE, FUEL SHUT OFF
7	5107073	1	PICKUP TUBE ASM,FUEL 16.75
8	5106957	1	FITTING, 1/4X3/16 REDUCER -(For units with 1/4" hose.)
9	5106956	1	FITTING, 1/4 TEE,BARB TYPE
10	5106954	1	FITTING, 90, 1/4-18 NPT NYLON
11	7700552X2P5	2	HOSE, VAPOR, 5MM ID, 2.50 LG
12	80025019	1	FILTER, FUEL
13	5106955	1	CHECK VALVE ASMY
14	7700552X4	1	HOSE, VAPOR, 5MM ID, 4.00 LG
15	93807	4	CLAMP, Hose
16	5021030	1	TIE, SELF-LOCKING, 6"
17	7700552X6	1	HOSE, Vapor, 5 MM ID, 6.00 LG

---

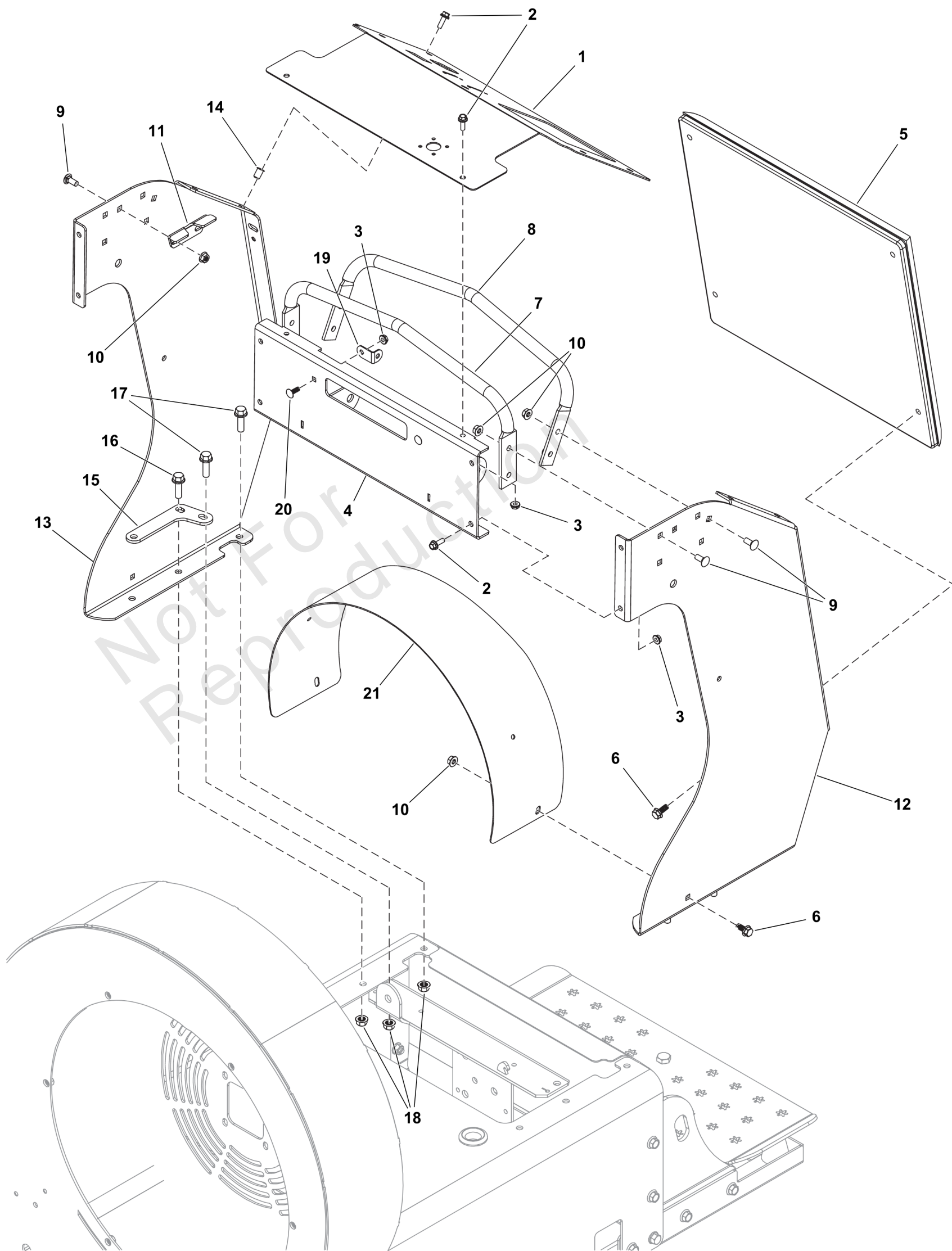
**Footnotes:**

Note: \*Includes reference items #1, #7, and #10.

# Handle Bar Group

Note: Unless noted otherwise, use the standard torque specifications

Mfg. No: 5901808-X3000



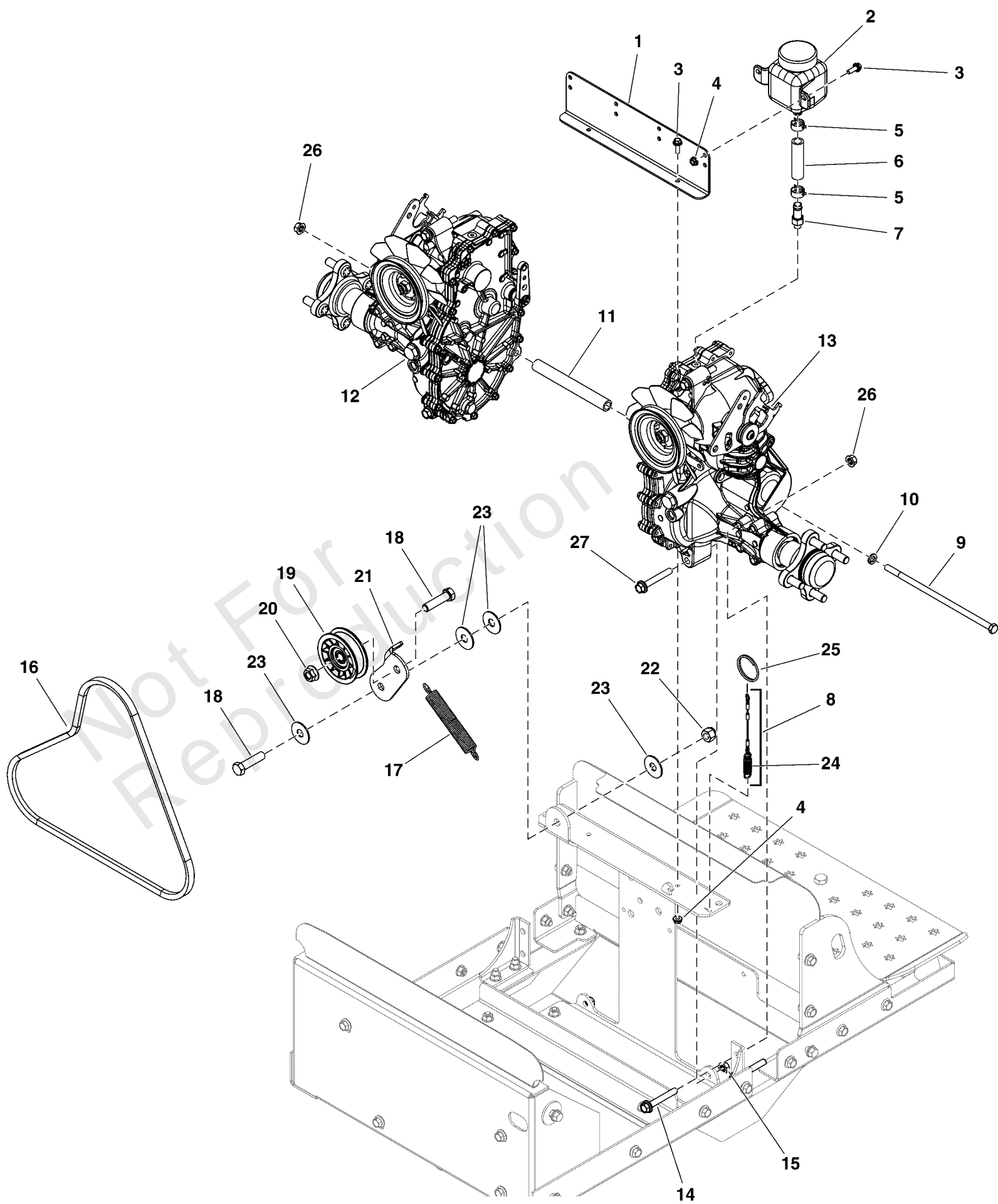
## Handle Bar Group

REF NO	PART NO	QTY	DESCRIPTION
1	5601267	1	PLATE, DASH PANEL, NEW WITH DECALS
2	5106872	10	BOLT, 1/4-20 X 3/4, FLANGE, CZ
3	5025126	10	NUT, 1/4-20 HEX SERR. FLANGE
4	-----	1	WELD, DASH FRONT PANEL - ORG
5	5107538	1	KNEE PAD, BLWR
6	80003531	6	SCREW, 5/16-18x0.750, GR5, WHIZ-LOCK, ZC
7	5107044A	1	FRONT HANDLE, BLWR - BLK
8	5107045A	1	REAR HANDLE, BLWR - BLK
9	5025145X6	12	BOLT, 5/16-18 X 3/4, CARRIAGE, GD5, CZ
10	5025127	14	NUT, 5/16-18 HEX SERRATED FLANGE (SMALL)
11	5107391	2	BRACKET, NEUTRAL CENTERING, CZ
12	5418516AD	1	CONTROL TOWER X3, LH - ORG
13	-----	1	CONTROL TOWER X3, RH - ORG
14	5106833	4	NUT, 1/4-20, RIV, CZ
15	5107437A	2	PLATE, UPPER BEAM MOUNT - BLK
16	5025390X8	4	BOLT, 3/8-16 X 1, FLANGE, GD 5, CZ
17	5025390X8	4	BOLT, 3/8-16 X 1, FLANGE, GD 5, CZ
18	5025666	8	NUT, 3/8-16, FLANGE, SERRATED UNDER HEAD
19	5107389AA	2	BRACKET, L HEADLIGHT MOUNT - BLK
20	80003518	2	BOLT, 1/4-20X0.750,GR5,STD NECK,SQ,ZC/CL
21	5418518AD	1	PLATE, BELT GUARD X3 - ORG

# Hydraulic Group

Note: Unless noted otherwise, use the standard torque specifications

Mfg. No: 5901808-X3000





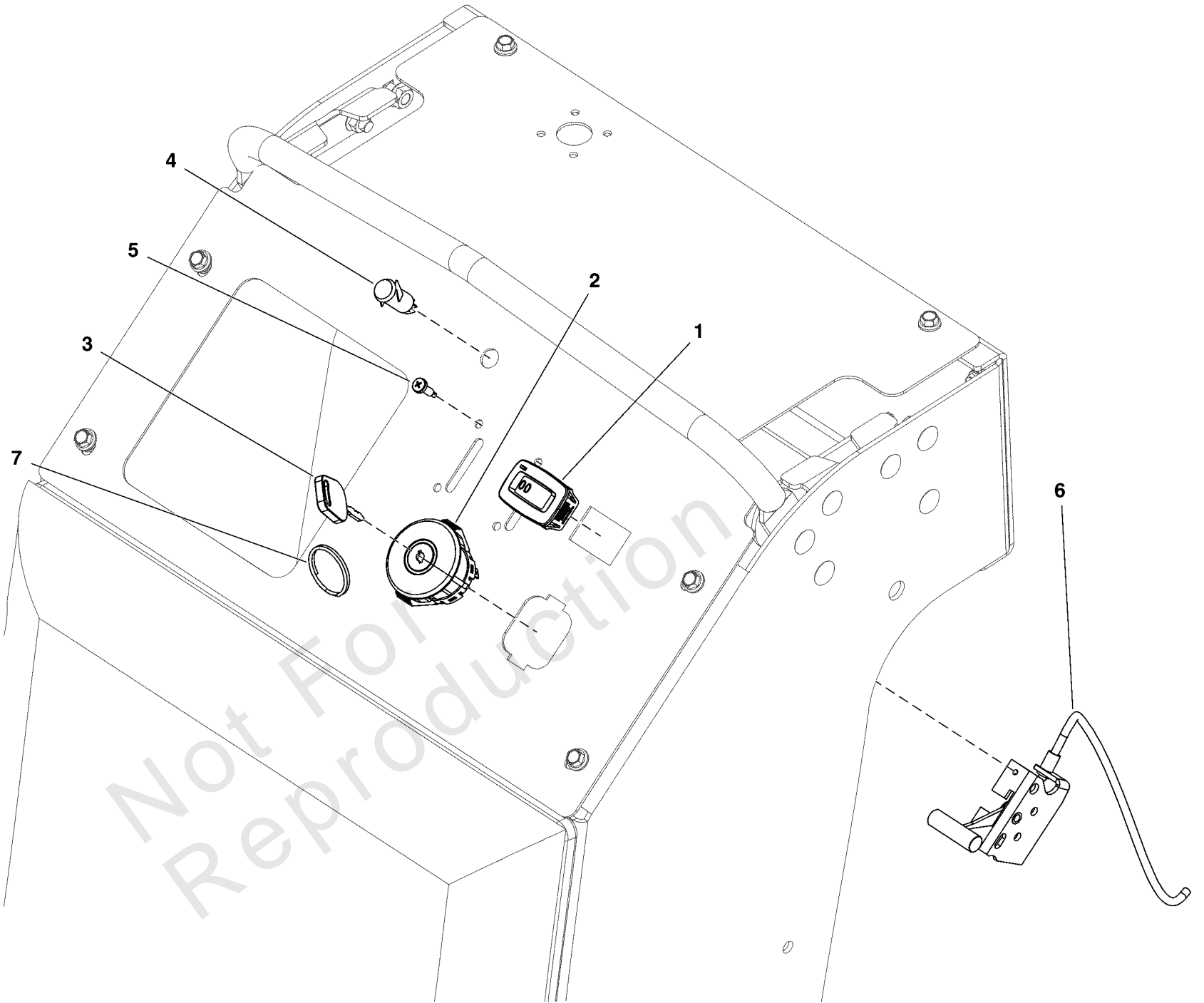
## Hydraulic Group

REF NO	PART NO	QTY	DESCRIPTION
1	5107366AAFS	1	MOUNT, TANK
2	5100473SM	2	RESERVOIR
3	5106872FS	6	BOLT
4	5025126FS	6	NUT
5	5025474SM	4	CLAMP - HOSE
6	5050857X1P75	2	HOSE, 1/2" PUSH-ON, 1.75"
7	5107224FS	2	FITTING
8	5107235FS	2	CABLE, HYDRAULIC CONTROL -(Includes item #24)
9	5025667FS	1	BOLT
10	5025156FS	1	WASHER
11	5107370FS	1	SPACER
12	5107188FS	1	TRANSAXLE -(S/N: 40015467047 and below)
12	84006968	1	TRANSAXLE -(S/N: 40015467048 and above)
13	5107186	1	TRANSAXLE, ZT3100, LH, ZJ-HCRP-3A7B-19XX -(S/N: 40015467047 and below)
13	84006969	1	TRANSAXLE -(S/N: 40015467048 and above)
14	5025670	4	BOLT, HEX, 3/8-16 X 3", SER FLG GRD5, CZ
15	5025666FS	4	NUT
16	5106813FS	1	BELT
17	5106923FS	1	SPRING
18	5025017X16YP	2	BOLT, 1/2-13 X 2 GD5
19	5107103FS	1	PULLEY, IDLER
20	770225	1	NUT
21	5107365AAFS	1	ARM, IDLER
22	5025056FS	1	NUT
23	5107348FS	4	WASHER
24	5106888FS	2	SPRING, EXTENSION
25	5108012FS	2	KEY
26	5025394SM	5	NUT, 3/8-16 HEX NYLOCK
27	5106859FS	4	BOLT

# Instrument Control Panel Group

Note: Unless noted otherwise, use the standard torque specifications

Mfg. No: 5901808-X3000



## ***Instrument Control Panel Group***

---

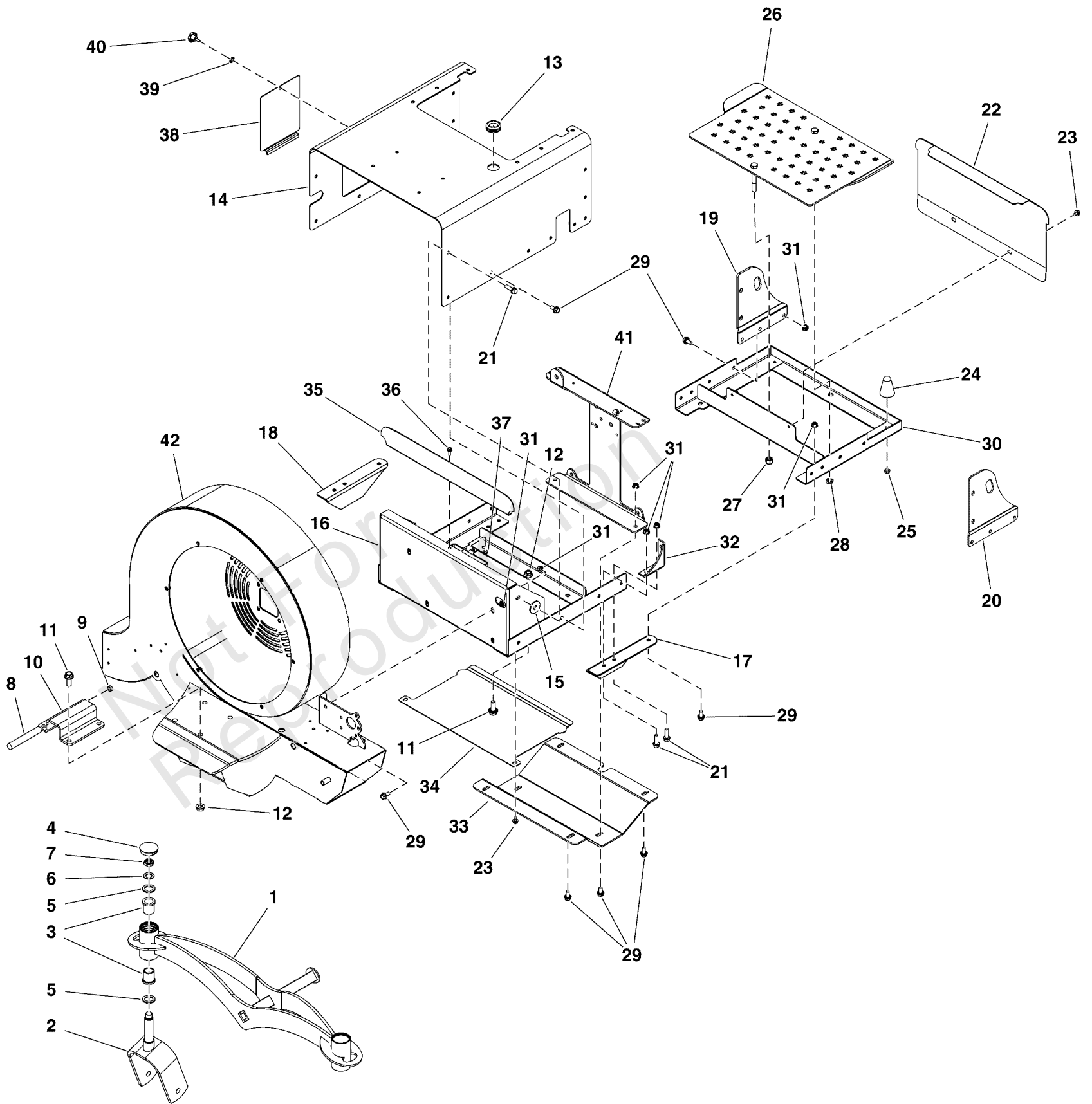
<b>REF NO</b>	<b>PART NO</b>	<b>QTY</b>	<b>DESCRIPTION</b>
1	5106789FS	1	METER, HOUR
2	5107021FS	1	SWITCH, Ignition
3	1714054SM	2	KEY-IGNITIOM W/PLASTI
4	5106974FS	1	LIGHT, INDICATOR
5	5106862FS	4	SCREW
6	5107194FS	2	CABLE, Throttle/Choke
7	5108012FS	1	KEY -(Key Ring for ignition keys)

Not For Reproduction

# Main Frame Group

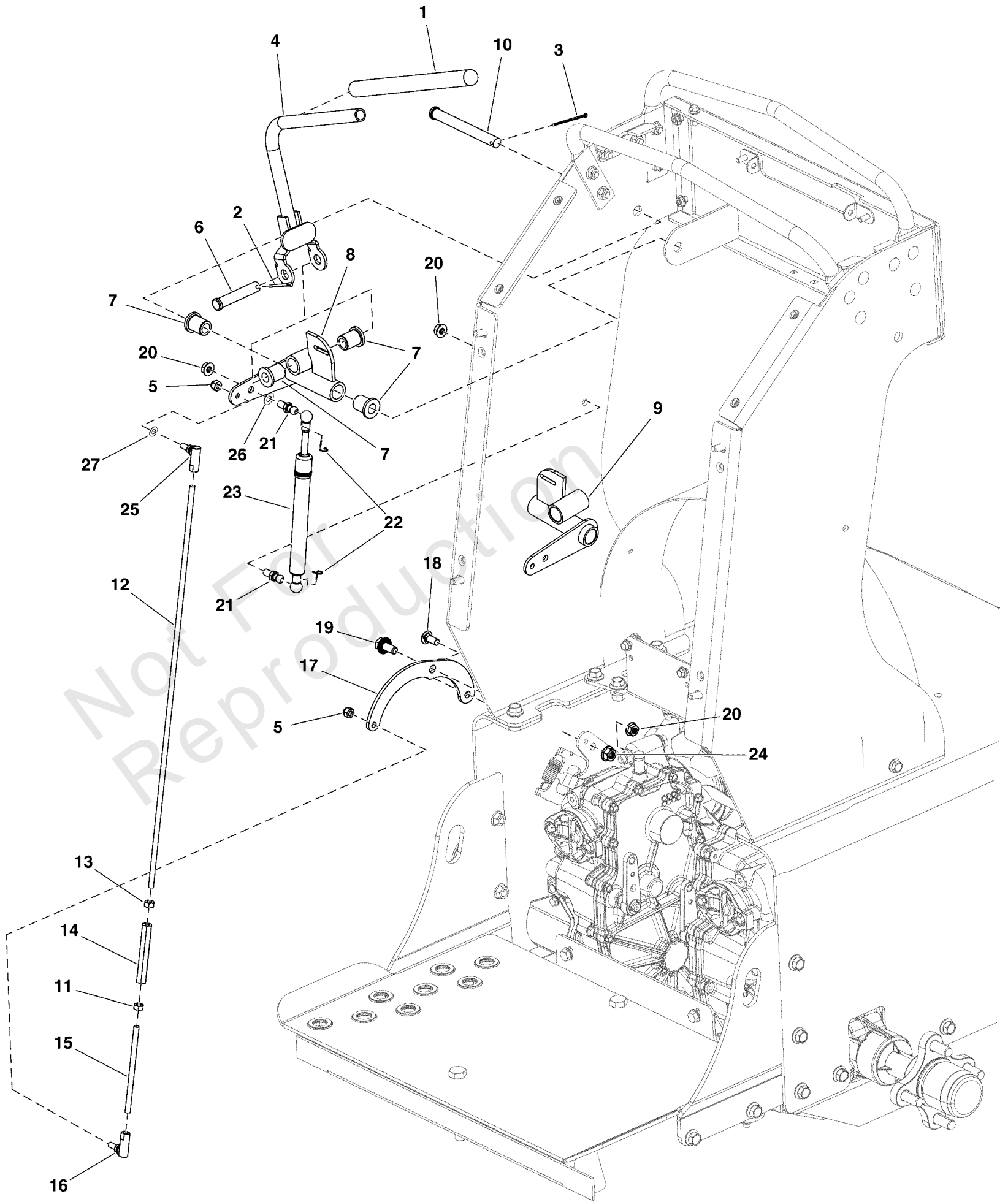
Note: Unless noted otherwise, use the standard torque specifications

Mfg. No: 5901808-X3000



## Main Frame Group

REF NO	PART NO	QTY	DESCRIPTION
1	5418608A	1	WELD, FRONT END PIVOT, X3 - BLK
2	5418604A	2	WELD, CASTER YOKE, X3 - BLK
3	5021541	4	BUSHING, FLANGE
4	5107567	2	CAP, GREASE, PLASTIC
5	5107778	4	WASHER, 1 X 10GA, MACH, CZ
6	5106783	2	NUT, 3/4-10, NYLOCK JAM, CZ
7	5107779	2	WASHER, 3/4 X 14GA, MACH, CZ
8	5107356	4	CORD, RUBBER
9	-----	2	RUBBER BAND -(Not a serviceable part.)
10	5419091AD	1	PLATE, FRONT END TORSION C - ORG
11	5106786	6	BOLT, 1/2-13 X 1-1/4, FLANGE, CZ
12	5106787	6	NUT, 1/2-13 SERRATED FLANGE, CZ
13	5106788	1	GROMMET, RUBBER
14	5418509A	1	WELD, MOTOR BOX - BLK
15	5107390	2	SPACER, MOTOR BOX 10GA
16	5107435A	1	WELD, X3 FRONT CHASSIS - BLK
17	5107383A	1	BRACKET, BOTTOM CHASSIS LEFT - BLK
18	5107382A	1	BRACKET, BOTTOM CHASSIS RIGHT - BLK
19	-----	1	PLATE, TIE DOWN RH - BLK
20	-----	1	PLATE TIE DOWN LH - BLK
21	5025390X10	10	BOLT, 3/8-16 X 1-1/4, FLANGE, GD 5, CZ
22	-----	1	PLATE, TOE KICK, FB2000 - BLK
23	5106898	4	SCREW, 5/16-18 X 1/2, SLF TPNG, CZ
24	5107206	4	BUMPER, RUBBER, 5/16-18
25	5025127	4	NUT, 5/16-18 HEX SERRATED FLANGE (SMALL)
26	5418525A	1	WELD, PLATFORM, BLWR - BLK
27	5025056	1	NUT, 1/2-13 HEX NYLON LOCK
28	5025646	1	NUT, NTE, 1/2-13, CZ
29	5106881	28	BOLT, 3/8-16 X 3/4, FLANGE, CZ
30	84008760	1	FRAME, Rear
31	5025666	38	NUT, 3/8-16, FLANGE, SERRATED UNDER HEAD
32	5107387A	2	WELD, TRANS 90 DEG MOUNT BRACKET - BLK
33	5107384A	1	PLATE, SKID - BLK
34	5107385A	1	GUARD, LOWER DEBRIS - BLK
35	5107386A	1	GUARD, FORWARD DEBRIS - BLK
36	5106872	2	BOLT, 1/4-20 X 3/4, FLANGE, CZ
37	5025126	2	NUT, 1/4-20 HEX SERR. FLANGE
38	5419192A	1	PLATE, BATTERY DOOR - BLK
39	5107350	1	WASHER, INT / EXT TOOTH, CZ
40	5106913	1	KNOB, 1/4-20 X 1/2 CAP SCREW
41	5107388A	1	WELD TRANS I-BEAM - BLK
42	-----	1	WELD, BLOWER HOUSING , X3 - ORG



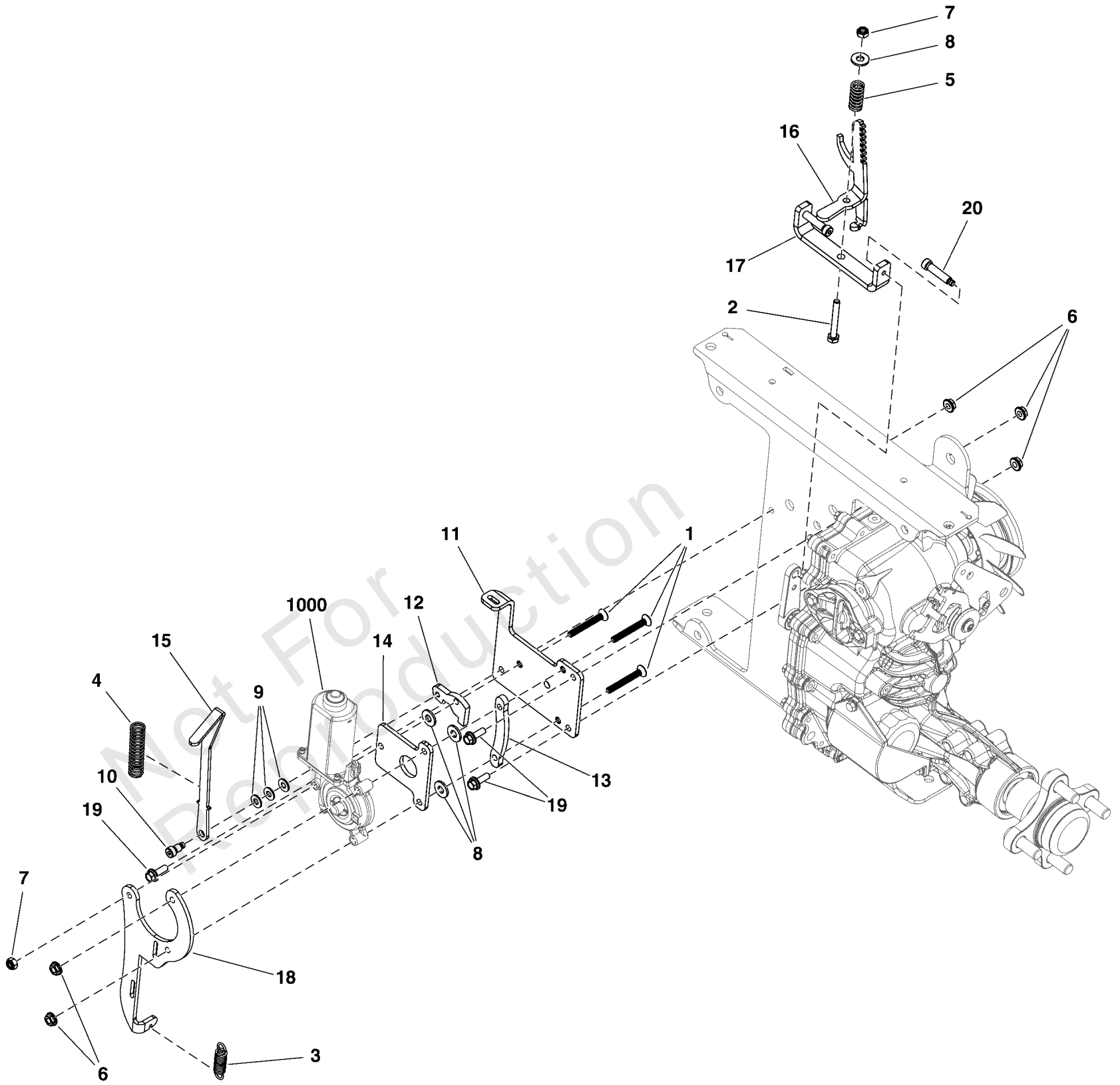
## Motion Control Group

REF NO	PART NO	QTY	DESCRIPTION
1	5106940FS	2	GRIP
2	5025203X12	2	PIN, COTTER, 1/8 X 1 1/2, CZ
3	5107351FS	2	PIN, COTTER
4	5107368FS	2	CONTROL, HANDLE
5	5106892FS	4	NUT
6	5022044SM	2	PIN, CLEVIS, 1/2 X 2-
7	5106943FS	8	BUSHING
8	5107369FS	1	BRACKET, Control
9	5107367FS	1	BRACKET
10	5025456FS	2	PIN, CLEVIS
11	7090095FS	2	NUT, 1/4
12	5107108FS	2	ROD
13	5106858FS	2	NUT
14	5106971FS	2	TUBE, CONNECTING
15	5107303FS	2	ROD
16	5106802FS	2	JOINT, BALL
17	5107241FS	2	ARM, CONTROL
18	5025145X6SM	2	BOLT, 5/16-18 X 3/4",
19	5106881FS	2	BOLT
20	5025127SM	6	NUT, 5/16-18 HEX SERR
21	5100941SM	4	BALL STUD
22	5106969FS	4	CLIP
23	5107193FS	2	DAMPENER
24	5025666FS	2	NUT
25	5106803FS	2	JOINT, BALL
26	703350	2	WASHER
27	703332	2	WASHER

# Parking Brake Group S/N: 4002219158 and Below

Note: Unless noted otherwise, use the standard torque specifications

Mfg. No: 5901808-X3000





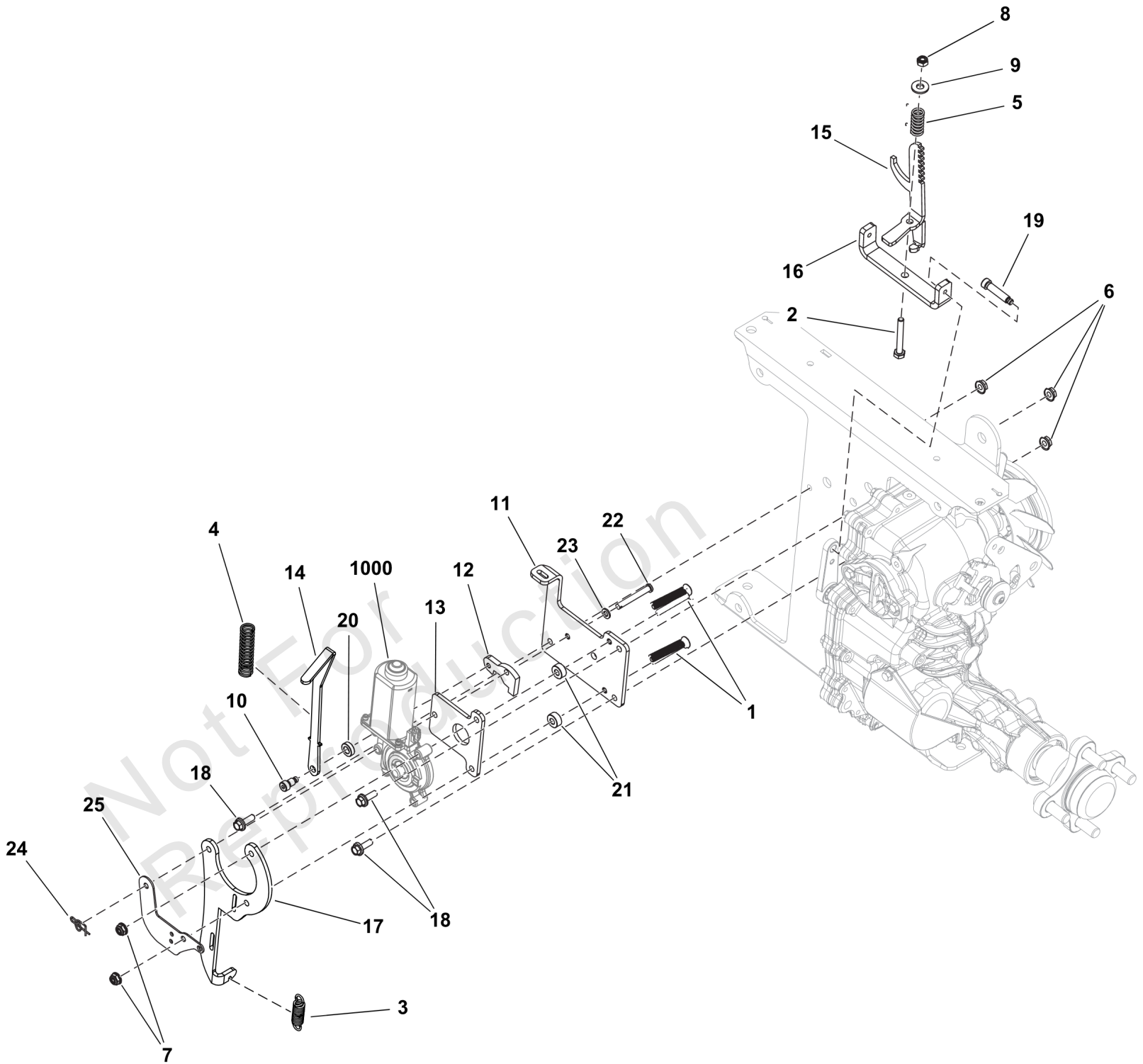
### **Parking Brake Group S/N: 4002219158 and Below**

REF NO	PART NO	QTY	DESCRIPTION
1	5106908	3	SCREW, 1/4-20 X 2, PHLPS, SS
2	5025010X16	1	BOLT, 1/4-20 X 2", GD5
3	5106888	1	SPRING, EXTENSION, #29
4	5106910	1	SPRING, COMPRESSION, #29
5	5106911	1	SPRING, COMPRESSION, #21
6	5025126	5	NUT, 1/4-20 HEX SERR. FLANGE
7	5025095	2	NUT, 1/4-20 HEX NYLON LOCK
8	5106815	4	WASHER, 1/4 SAE, CZ
9	5025154	3	WASHER, 1/4 SAE
10	5106912	1	BOLT, 5/16 X 1/2, SHLDR, SS
11	5107321	1	PLATE, BRAKE BACKING
12	5107322	1	PLATE, BRAKE CAM, CZ
13	5107323AA	1	PLATE, BRAKE SPACER - BLK
14	5107324	1	PLATE, CAM COVER, CZ
15	5107328	1	PLATE, BRAKE RELEASE LEVER,CZ
16	5107325	1	WELD, BRAKE GEAR RACK,CZ
17	5110201FS	1	ARM, Lever
18	5107327	1	PLATE, SWITCH MOUNT, CZ
19	5106872	3	BOLT, 1/4-20 X 3/4, FLANGE, CZ
20	5106941	2	BOLT, 5/16 X 1-1/4, SHLDR, SS
1000	-----	0	Refer to: Electrical Group

# Parking Brake Group S/N: 4002219159 and above

Note: Unless noted otherwise, use the standard torque specifications

Mfg. No: 5901808-X3000



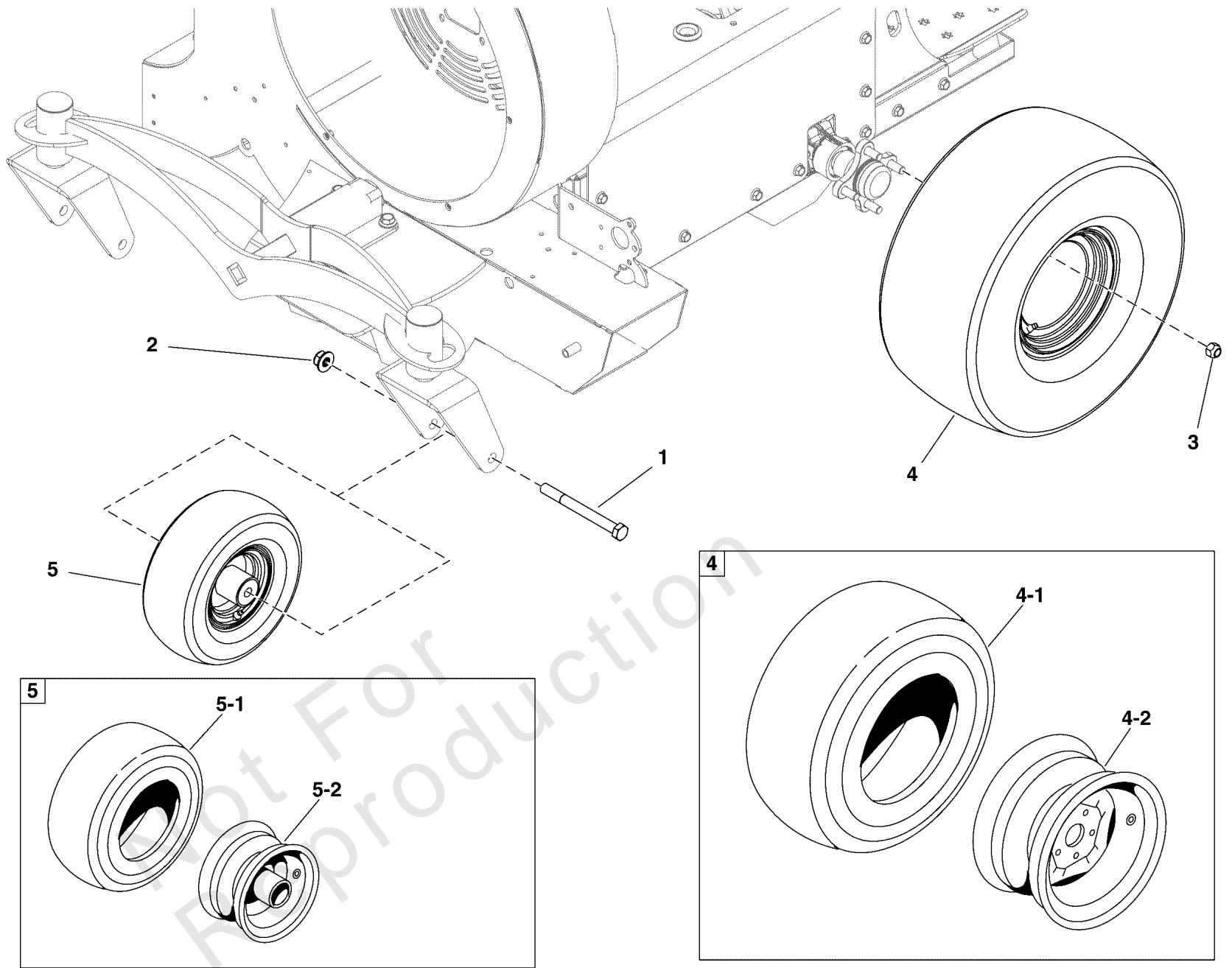
**Parking Brake Group S/N: 4002219159 and above**

REF NO	PART NO	QTY	DESCRIPTION
1	5106908FS	2	SCREW
2	5025010X16FS	1	BOLT
3	5106888FS	1	SPRING, EXTENSION
4	5106910FS	1	SPRING, Compression
5	5106911FS	1	SPRING, COMPRESSION
6	5025126FS	3	NUT
7	5025391FS	2	NUT
8	5025095SM	1	NUT, 1/4-20 HEX NYLON
9	5106815FS	1	WASHER
10	5106912FS	1	BOLT
11	5107321FS	1	PLATE
12	5107322FS	1	PLATE
13	5107324FS	1	PLATE
14	5107328FS	1	PLATE
15	5107325FS	1	BRACKET, BRAKE
16	5110201FS	1	ARM, Lever
17	5107327FS	1	PLATE, SWITCH
18	5106872FS	3	BOLT
19	5106941FS	2	BOLT
20	84008621	1	SPACER
21	84008622	2	SPACER
22	84008623	1	PIN, Clevis
23	84008624	1	WASHER, Flat
24	703355	1	COTTER PIN, 3/8
25	84008625	1	PLATE, Switch
1000	----	0	Refer to: Electrical Group

# Wheel and Tire Group

Note: Unless noted otherwise, use the standard torque specifications

Mfg. No: 5901808-X3000



## Wheel and Tire Group

REF NO	PART NO	QTY	DESCRIPTION
1	5106896	2	BOLT, 5/8-11 X 6-1/2, CZ
2	5025403	2	NUT, 5/8-11 HEX NYLOCK FLANGE
3	5020601	8	NUT, 1/2-20, FOR WHEEL BOLT SILVER -(Torque lug nuts to 90 ft-lbs (122Nm))
4	5107874	2	TIRE/WHEEL ASM, 20 X 8.00-8, TURF
4-1	5107874X1	2	TIRE, 20-8 x 8 4PLY (TIRE ONLY) -(One per tire)
4-2	-----	2	WHEEL, 8 X 6.125 BW, 4 ON 4BC, RIM ONLY -(Not available for sale. Refer to Complete Tire Assembly)
5	5107877	2	TIRE ASSEMBLY, 11 X 4.00 - 5
5-1	5107877X1	2	TIRE, 11-4 X 5, 4PLY, TIRE ONLY -(One per tire)
5-2	-----	2	WHEEL, RIM -(Not available for sale. Refer to Complete Tire Assembly)
5-3	5107877X3	4	5/8 X 1-3/8 DOUBLE SEALED FLANGED BB -(Two per tire)

Not For Reproduction

# Hardware Identification & Torque Specifications

Torque Specification Chart								
FOR STANDARD METRIC MACHINE HARDWARE (Tolerance ± 20%)								
Property Class	5.6		8.8		10.9		12.9	
	Class 5.6		Class 8.8		Class 10.9		Class 12.9	
Size Of Hardware	in/lbs	Nm.	in/lbs	Nm.	in/lbs	Nm.	in/lbs	Nm.
	ft/lbs		ft/lbs		ft/lbs		ft/lbs	
M3	5.88	.56	13.44	1.28	19.2	1.80	22.92	2.15
M4	13.44	1.28	30.72	2.90	43.44	4.10	52.56	4.95
M5	26.4	2.50	60.96	5.75	5.97	8.10	7.15	9.7
M6	44.64	4.3	7.3	9.9	10.3	14	12.1	16.5
M7	5.2	7.1	12.1	16.5	16.9	23	19.9	27
M8	7.7	10.5	17.7	24	25	34	29	40
M10	15	21	35	48	50	67	59	81
M12	26	36	61	83	86.2	117	103	140
M14	42	58	101	132	136	185	162	220
M16	64	88	147	200	210	285	250	340
M18	89	121	202	275	287	390	346	470
M20	126	171	290	390	405	550	486	660
M22	169	230	390	530	559	745	656	890
M24	217	295	497	375	708	960	840	1140
M27	320	435	733	995	1032	1400	1239	1680
M30	435	590	995	1350	1401	1900	1681	2280
M33	590	800	1349	1830	1902	2580	2278	3090
M36	759	1030	1740	2360	2441	3310	2935	3980
M39	988	1340	2249	3050	3163	4290	3798	5150

Torque Specification Chart						
FOR STANDARD MACHINE HARDWARE (Tolerance ± 20%)						
Hardware Grade	No Marks		SAE Grade 5		SAE Grade 8	
	SAE Grade 2		SAE Grade 5		SAE Grade 8	
Size Of Hardware	in/lbs	Nm.	in/lbs	Nm.	in/lbs	Nm.
	ft/lbs		ft/lbs		ft/lbs	
8-32	19	2.1	30	3.4	41	4.6
8-36	20	2.3	31	3.5	43	4.9
10-24	27	3.1	43	4.9	60	6.8
10-32	31	3.5	49	5.5	68	7.7
1/4-20	66	7.6	8	10.9	12	16.3
1/4-28	76	8.6	10	13.6	14	19.0
5/16-18	11	15.0	17	23.1	25	34.0
5/16-24	12	16.3	19	25.8	29	34.0
3/8-16	20	27.2	30	40.8	45	61.2
3/8-24	23	31.3	35	47.6	50	68.0
7/16-14	30	40.8	50	68.0	70	95.2
7/16-20	35	47.6	55	74.8	80	108.8
1/2-13	50	68.0	75	102.0	110	149.6
1/2-20	55	74.8	90	122.4	120	163.2
9/16-12	65	88.4	110	149.6	150	204.0
9/16-18	75	102.0	120	163.2	170	231.2
5/8-11	90	122.4	150	204.0	220	299.2
5/8-18	100	136	180	244.8	240	326.4
3/4-10	160	217.6	260	353.6	386	525.0
3/4-16	180	244.8	300	408.0	420	571.2
7/8-9	140	190.4	400	544.0	600	816.0
7/8-14	155	210.8	440	598.4	660	897.6
1-8	220	299.2	580	788.8	900	1,244.0
1-12	240	326.4	640	870.4	1,000	1,360.0

The guides and ruler furnished below are designed to help you select the appropriate hardware.



Nut, M8

Thread Diameter (mm)

Inside Diameter (in)      Threads per inch

Nut, 1/2-16



Screw, M8- 1.25 x 25

Thread Diameter (mm)      Distance between threads (mm)      Body Length (mm)

Body Diameter      Threads per inch      Body Length (in)

Screw, 1/2- 16 x 2



## Standard Hardware Sizing

When a washer or nut is identified as 1/2" (M8), this is the *Nominal size*, meaning the *inside diameter* is 1/2 inch (8mm metric thread diameter); if a second number is present it represents the *threads per inch* (distance between threads).

When bolt or capscrew is identified as 1/2 - 16 x 2" (M8 - 1.25 x 50), this means the *Nominal size*, or body diameter is 1/2 inch (8mm metric thread diameter), the second number, 16, represents the *threads per inch*, (*distance between threads*). The final number is the body length of the bolt or screw, 2 inches (50mm).

## NOTES

- These torque values are to be used for all hardware excluding: locknuts, self-tapping screws, thread forming screws, sheet metal screws and socket head setscrews.
- Recommended seating torque values for locknuts:
  - for prevailing torque locknuts - use 65% of grade 5 torques.
  - for flange whizlock nuts and screws - use 135% of grade 5 torques.
- Unless otherwise noted on assembly drawings, all torque values must meet this specification.

## Common Hardware Types

Hex Head Capscrew



Washer



Carriage Bolt



Hex Nut

## Wrench & Fastener Size Guide

1/4" Bolt or Nut Wrench—7/16"	5/16" Bolt or Nut Wrench—1/2"	3/8" Bolt or Nut Wrench—9/16"	7/16" Bolt or Nut Wrench (Bolt)—5/8" Wrench (Nut)—11/16"	1/2" Bolt or Nut Wrench—3/4"
M6 Bolt or Nut Wrench—10mm	M8 Bolt or Nut Wrench—13mm	M10 Bolt or Nut Wrench—17mm	M12 Bolt or Nut Wrench—19mm	M14 Bolt or Nut Wrench—22mm

