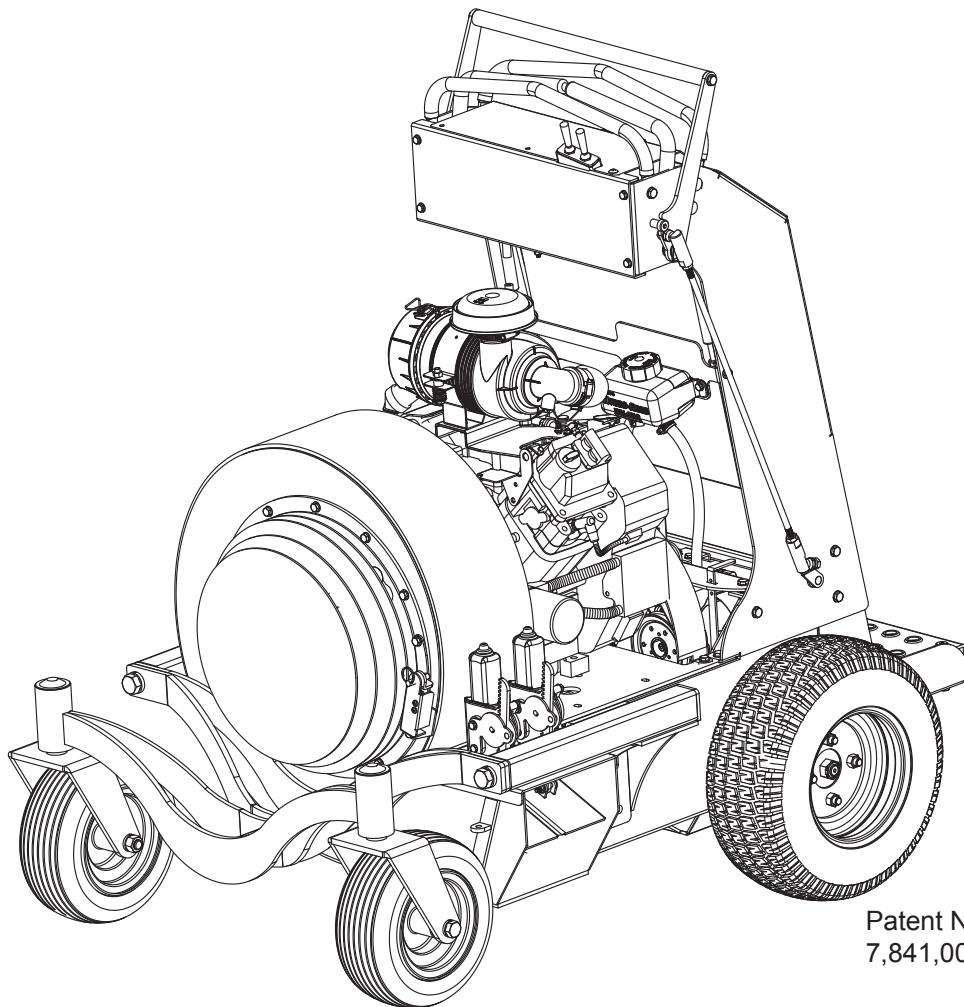




Commercial Debris Blower

Parts Manual



Patent Number
7,841,004,B1

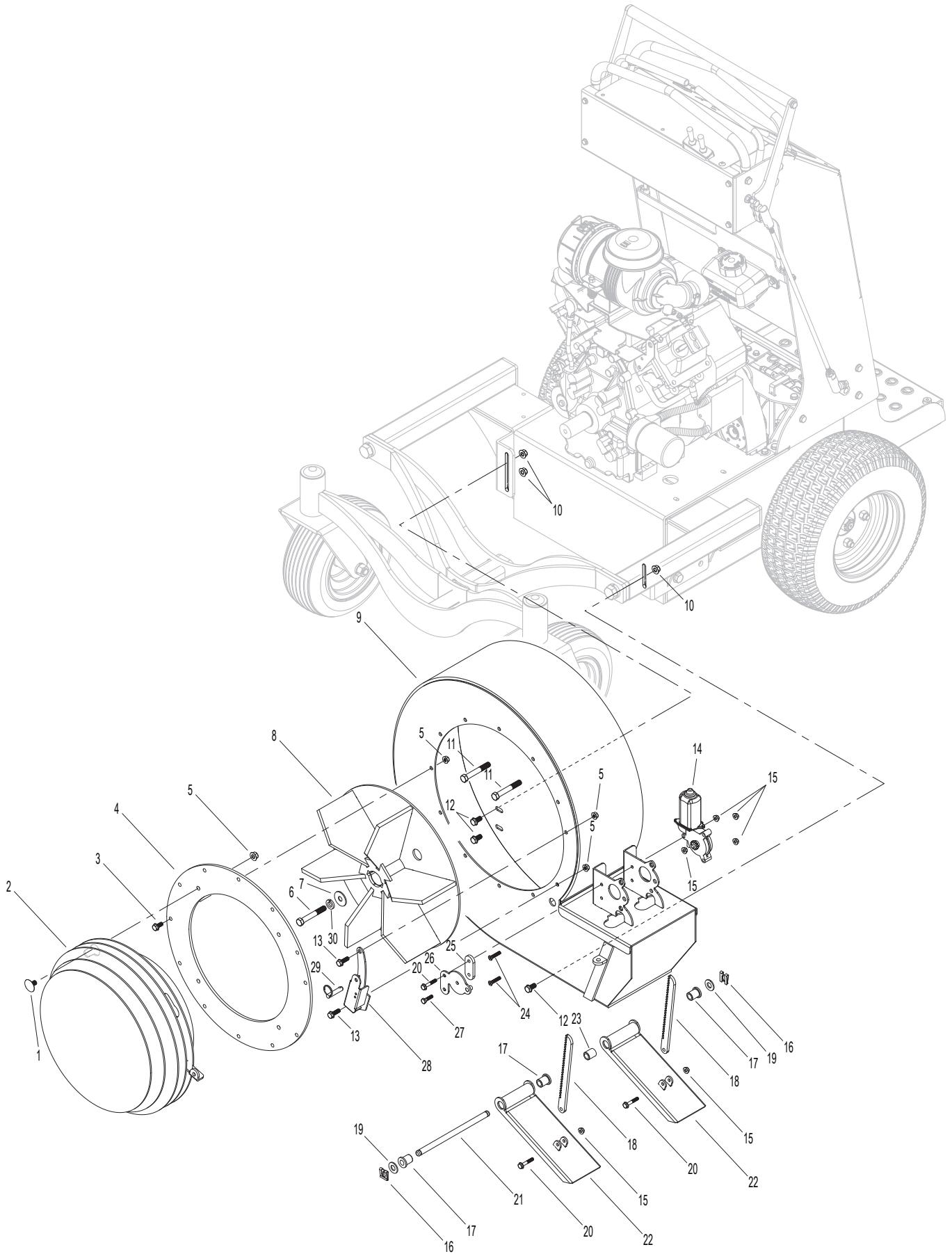
BLOWER COMPONENTS

Blower

Blo-Vac

Blower			Blo-Vac			
Part Number	Description	Quantity	Part Number	Description	Quantity	
1	425-1011-46604	Safety Cover Locking Button	4	16 101-17-6427	Safety Clip	2
2	101-10-2007	Safety Cover	1	17 0117-081216	1/2 Plastic Bushing	3
3	15108	5/16-18 x 3/4 Flange Bolt	10	18 101-16-1821	Deflector Rack	2
4	101-16-2003	Safety Cover Ring	1	19 15124	1/2 SAE Washer	2
5	15107	5/16-18 Flange Nut	13	20 15103	1/4-20 x 1-1/2 Flange Bolt	4
6	15092	7/16-20 x 2-3/4 Hex Bolt	1	21 425-1011-46622	Deflector Support Rod	1
6A	15093	5/8-18 x 3 Hex Bolt	1	22 101-10-2023	Deflector	2
7	425-1091-2009	7/16 - Impeller Washer	1	23 0117-081216C	1/2 Plastic Sleeve	1
7A	452-1091-2008	5/8 - Impeller Washer	1	24 15104	1/4-20 x 1-1/4 Phillips Head Machine Screw	4
8	107-10-201518	1-1/8 Impeller	1	25 101-16-2029	Rack Spacer	2
8A	107-10-2015	1-7/16 Impeller	1	26 101-10-2028	Rack Keeper	2
9	101-10-200110	Blower Housing	1	27 15102	1/4-20 x 3/4 Flange Bolt	2
10	15111	3/8-16 Flange Nut	3	28 101-10-2008	Safety Cover Switch Bracket	1
11	15095	7/16-14 x 2-1/2 Flange Bolt	2	29 15097	5/16 Lock Pin with Vac-Kit	1
12	15112	3/8-16 x 3/4 Flange Bolt	3	29B 15108	5/16-18 Flange Bolt Without Vac-Kit	1
13	15096	5/16-18 x 1 Flange Bolt	2	30 15098	7/16 Lock Washer	1
14	101-18-1802	Deflector Motor	2	30A 15099	5/8 Lock Washer	1
15	15101	1/4-20 Flange Nut	10			

BLOWER COMPONENTS



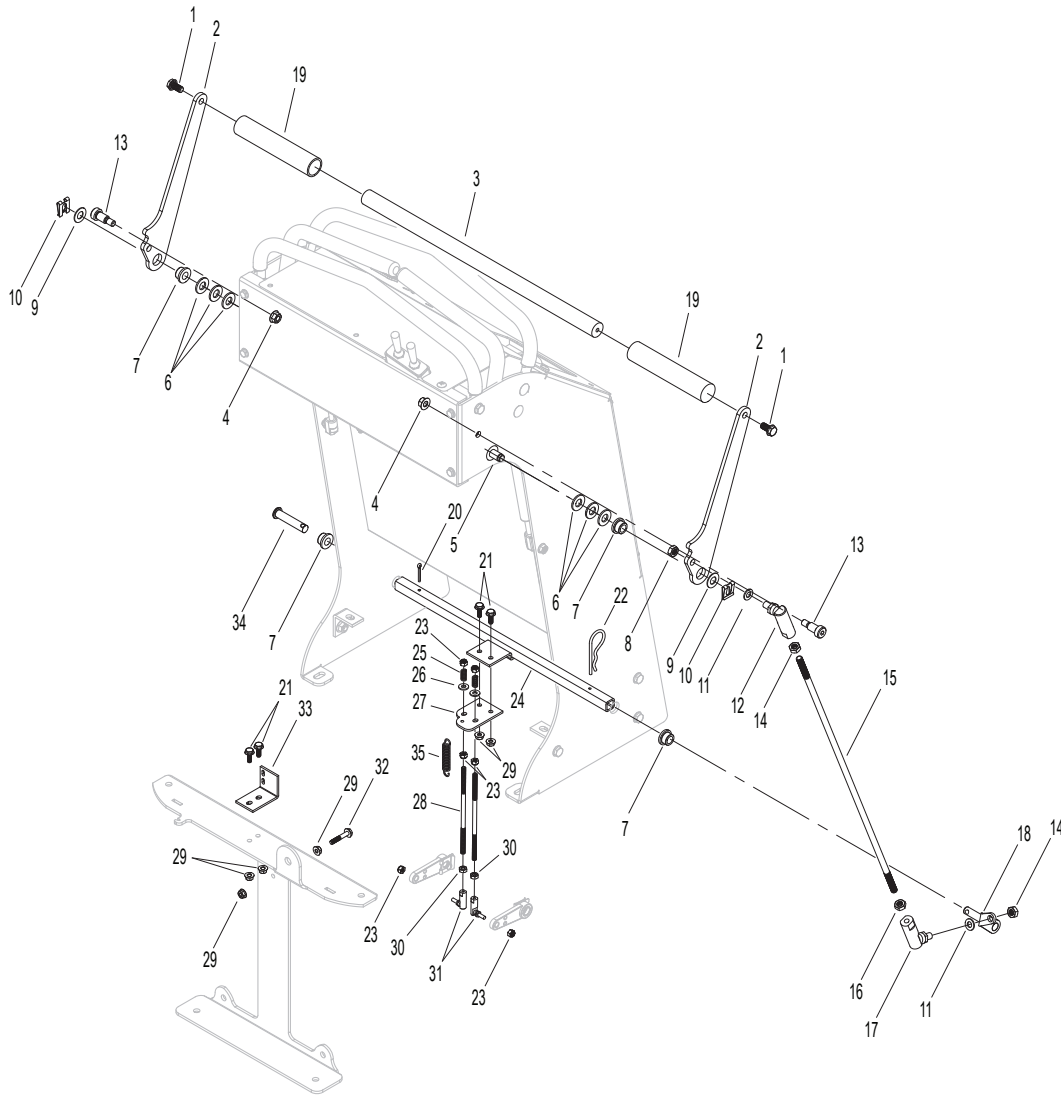
BRAKE ASSEMBLIES

Brakes

Blo-Vac

	Part Number	Description	Quantity		Part Number	Description	Quantity
1	15112	3/8-16 X 3/4 Flange Bolt	2	19	6422	Brake Bar Grip	2
2	102-16-2003	Brake Arm	2	20	15162	1/8 Cotter Pin	1
3	425-1091-2007	Brake Handle	1	21	15102	1/4-20 x 3/4 Flange Bolt	4
4	15111	3/8-16 Flange Nut	2	22	15089	1/8 R-Key	1
5	425-1021-46612	1/2 Control Support Rod	1	23	15140	1/4-28 Nylock Nut	6
6	15124	1/2" SAE Washer	6	24	114-10-3011	Lower Brake Bar	1
7	0117-081208	1/2 Plastic Bushing	4	25	15079	Compression Spring	2
8	15074	3/8"-24 Jam Nut	1	26	15080	1/4 Washer	2
9	15075	3/4 Thru-Hard Washer	2	27	114-10-3012	Lower Brake Plate	1
10	101-17-6427	Safety Clip	2	28	2500-7500	1/4-28 x 7-1/2 Linkage Rod	2
11	15071	3/8" Lock Washer	2	29	15101	1/4-20 Flange Nut	6
12	102-17-4633	Ball Joint RH 3/8"	1	30	15086	1/4-28 Left Hand Nut	2
13	15076	1/2 x 3/4" Shoulder Bolt	2	31	102-17-4627	Left Hand 90° Knuckle	2
14	15077	3/8-24 Nut	2	32	15103	1/4-20 x 1-1/2 Flange Bolt	1
15	3750-25500	3/8-24 x 25-1/2 Linkage Rod	1	33	114-10-3013	Brake Switch Bracket	1
16	15078	3/8-24 Left Hand Nut	1	34	15060	1/2 x 2-1/2 Clevis Pin	1
17	102-17-4627	Ball Joint LH 3/8"	1	35	15127	#77 Extension Spring	1
18	114-10-3010	Brake Z-Bend Pin	1				

BRAKE ASSEMBLIES



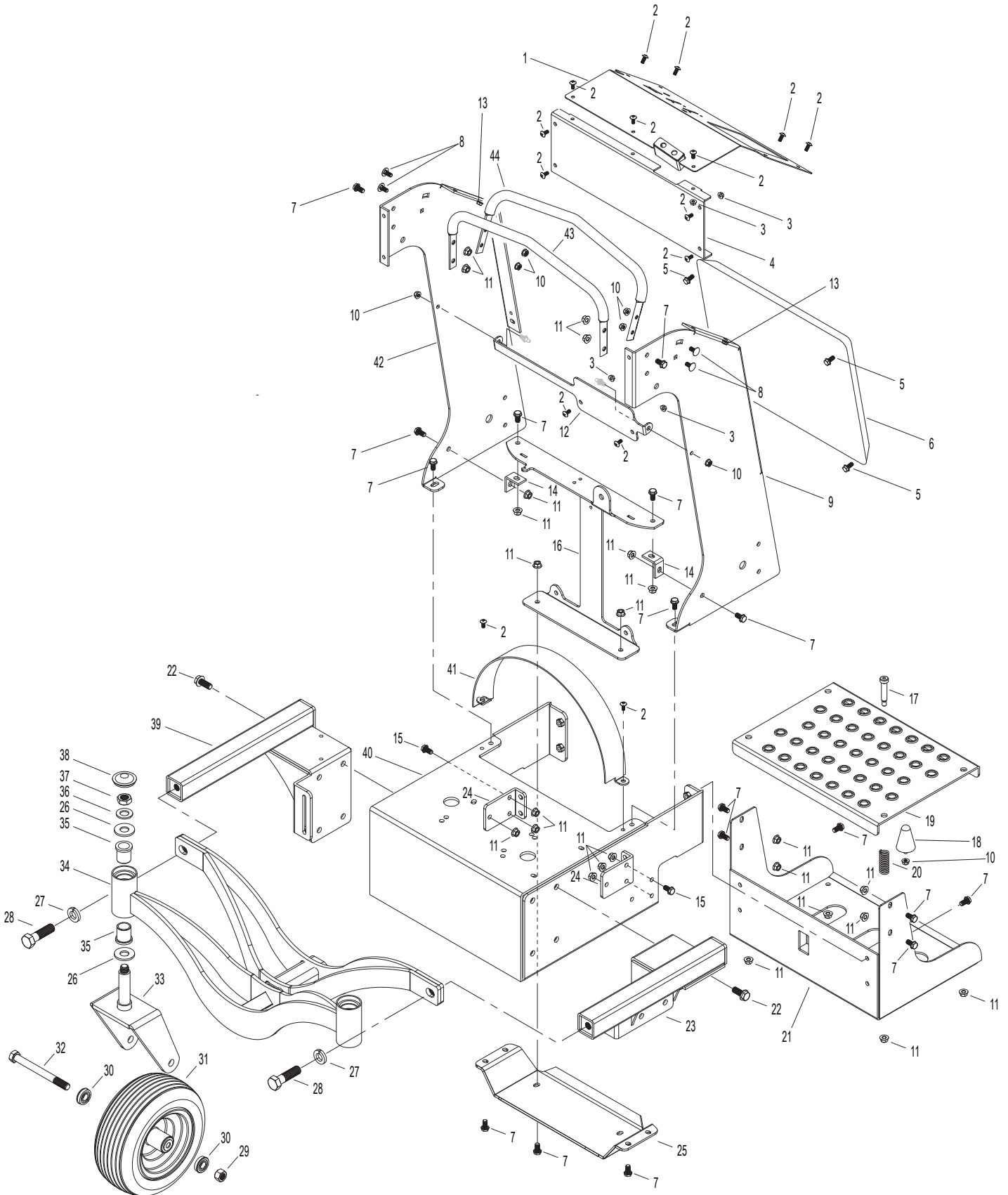
CHASSIS COMPONENTS

Chassis

Blo-Vac

Part Number	Description	Quantity	Part Number	Description	Quantity		
1	104-16-2001	Dash	1	22	15064	Bolt 1/2-13 x 1-1/4	8
2	15102	1/4-20 x 3/4 Flange Bolt	15	23	108-10-2018	Left Frame	1
3	15101	1/4-20 Flange Nut	13	24	114-10-3017	5-Hole L-Bracket	2
4	112-10-2007	Dash Front Panel	1	25	114-10-3018	Skid Plate	1
5	15108	5/16-18 x 3/4 Flange Bolt	4	26	15136	1 x 10 Gauge	4
6	112-18-1812	Pad	1			Machine Bushing	
7	15112	3/8-16 x 3/4 Flange Bolt	22	27	15065	Lock Washer 3/4	2
8	15109	5/16-18 x 3/4 Carriage Bolt	4	28	15066	3/4-10 x 2-3/4 Hex Bolt	2
9	112-16-201410	Right Upright	1	29	15154	5/8-11 Nylock Nut	2
10	15107	5/16-18 Flange Nut	8	30	109-17-7011	Caster Bearings	4
11	15111	3/8-16 Flange Nut	24	31	109-17-7012	Caster Wheel & Tire	2
12	114-10-3014	Hydro Tank Bracket	1	32	15153	Bolt 5/8-11 x 6-1/2	2
13	15061	1/4-20 Riv-Nut	2	33	109-10-2010	Caster Fork	2
14	114-10-3015	L-Bracket 2-Hole	2	34	109-10-2001	Front End Frame Assembly	1
15	15062	3/8-16 x 1 Flange Bolt	6	35	0117-162024	Plastic Bushing	4
16	114-10-3016	Hydro I-Beam	1	36	15137	3/4 Machine Bushing	2
17	15148	Bolt Shoulder 2 x 1/2	4	37	15139	3/4-10 Nylon Jamb Nut	2
18	425-16-11100	Rubber Mount	2	38	15161	Plastic Grease Cap	2
19	108-16-2001	Foot Pad	1	39	108-10-2006	Right Frame	1
20	15063	Spring Front	2	40	108-10-201310	Chassis Box	1
21	108-10-2012	Foot Tray	1	41	425-427-428 BG	Belt Guard	1
				42	112-16-201310	Left Upright	1
				43	16-30501	Forward Stop	1
				44	16-30502	Reverse Stop	1

CHASSIS COMPONENTS



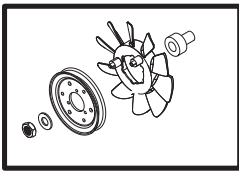
HYDROSTATIC COMPONENTS

Hydro

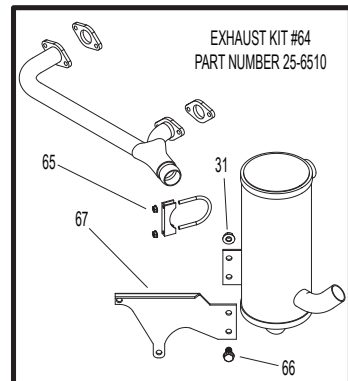
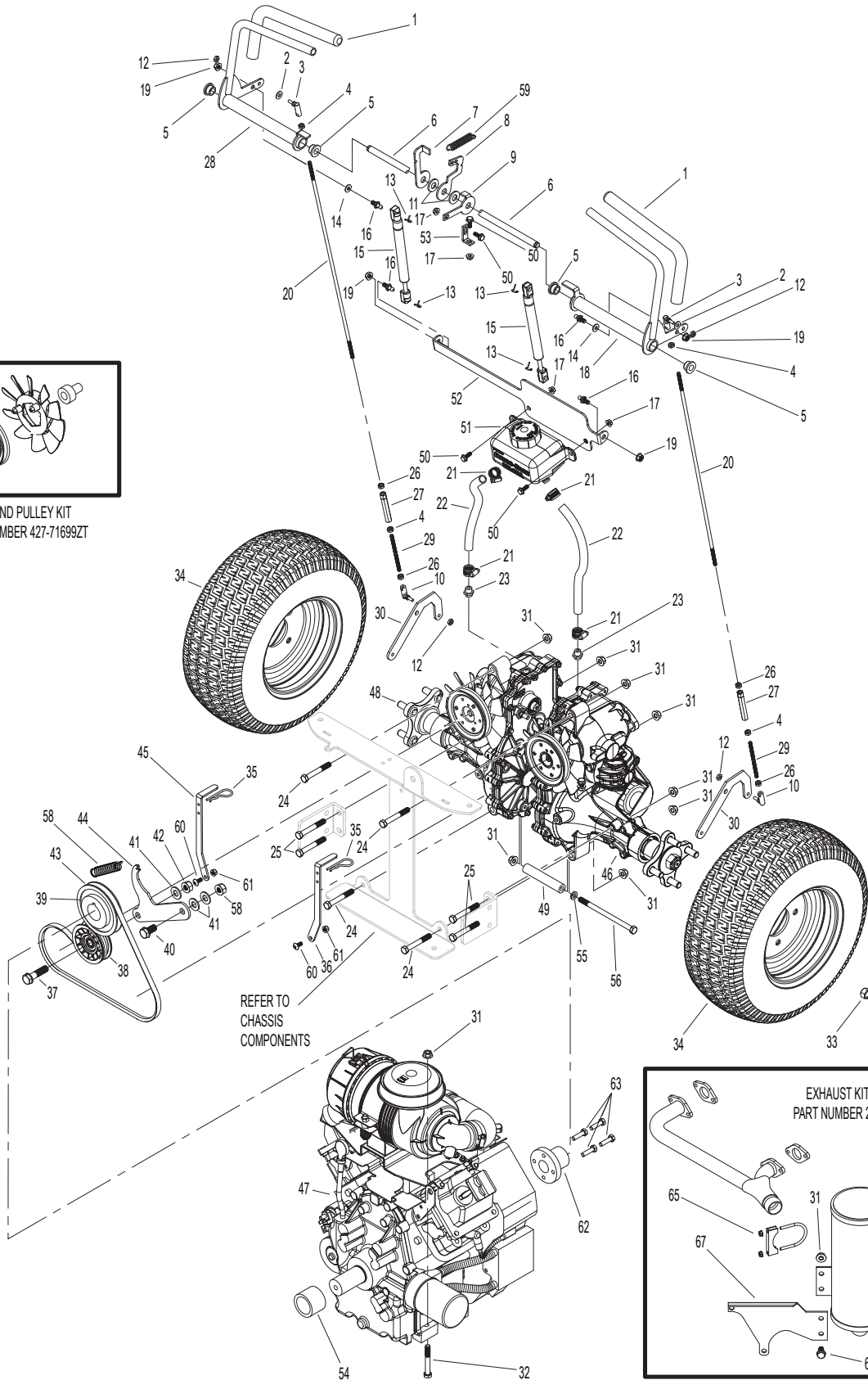
Blo-Vac

Part Number	Description	Quantity	Part Number	Description	Quantity		
1	139529	Control Grip	2	35	15089	R-Key	2
2	15080	1/4 Lock Washer	2	36	114-10-3005	Left Neutral Release	1
3	103-17-4633	1/4-28 Right Hand 90 Knuckle	2	37	15149	1/2-13 x 2-1/4 Flange Bolt	1
4	15081	1/4-28 Right Hand Nut	4	38	17-4101	Plastic Idler Pulley	1
5	0117-081208	1/2 Plastic Bushing	4	39	425-3211	4" Drive Pulley	1
6	425-1021-46612	1/2 Control Support Rod	1	40	15070	1/2-13 x 1-3/4 Flange Bolt	1
7	114-10-3001	Neutral Safety Switch Stop	1	41	15124	1/2 SAE Washer	2
8	114-10-3002	Neutral Safety Switch Bracket	1	42	15146	1/2-13 Flange Nut	1
9	114-10-3003	Neutral Centering Bracket	1	43	1515-4343A	A-43 Drive Belt	1
10	102-17-4627	1/4-28 Left Hand 90 Knuckle	2	44	114-50-3004	Idler Pulley Arm	1
11	0117-1208	1/2 Plastic Washer	2	45	114-10-3006	Right Neutral Release	1
12	15140	1/4-28 Nylock Nut	4	46	3A7B-1XXX	Left Hydro Pump	1
13	103-17-4431	Dampener Clip	4	47	107-17-2225	24 HP Subaru Engine	1
14	15082	5/16 Lock Washer	2		107-17-2227	27 HP Kohler Engine	1
15	425-103-174430	Dampener	2	48	3A7C-1XXX	Right Hydro Pump	1
16	103-17-4429	Ball Stud	4	49	114-10-3007	Hydro Spacer Tube	1
17	15046	1/2-13 Flange Nut	4	50	15102	1/4-20 x 3/4 Flange Bolt	4
18	102-10-2010	Left Control Handle	1	51	71354	Hydro Tank	1
19	15107	5/16-18 Flange Nut	4	52	114-10-3008	Hydro Tank Bracket	1
20	2500-20500	1/4-28 x 20-1/2 Linkage Rod	2	53	114-10-3009	Neutral Switch L-Bracket	1
21	15083	Oetiker Clamp	4	54	425-1071-2017	Spacer Hub 1-1/8	1
22	425-70054	1/2 Hydro Hose	2		425-1071-2018	Spacer Hub 1-7/16	1
23	HU001	Hydro Fitting	2	55	15071	3/8 Lock Washer	1
24	15084	3/8-16 x 2-1/4 Flange Bolt	4	56	15072	3/8-16 x 7-1/2 Hex Bolt	1
25	15085	3/8-16 x 2-3/4 Flange Bolt	4	57	15073	1/2-13 Nylock Nut	1
26	15086	1/4-28 Left Hand Nut	4	58	15126	#317 Extension Spring	1
27	103-17-4635	1/4-28 x 3 Turnbuckle	2	59	15128	#29 Extension Spring	1
28	102-10-2011	Right Control Handle	1	60	15102	1/4-20 x 3/4 Flange Bolt	2
29	2500-4500	1/4-28 x 4-1/2 Linkage Rod	2	61	15067	1/4-20 Nylock Nut	2
30	114-10-3004	Hydro Pump Bracket	2	62	425-427-2010	Flywheel Input Shaft	1
31	15111	3/8-16 Flange Nut	15		425-427-2010K	Flywheel Input Shaft	1
32	15087	3/8-16 x 2-1/2 Flange Bolt	4	63	15069	(Kohler)	
33	15088	1/2-20 Lug Nut	8	64	25-6510	M8-1.25 x 30 MM	4
34	113-17-7012	18 x 8.5 x 8 Turf Saver	2	65	25-6511	Exhaust Kit	1
				66	15112	1-1/4 Muffler Clamp	1
				67	25-6512	3/8-16 x 3/4 Flange Bolt	2
						Muffler Mount	1

HYDROSTATIC COMPONENTS



FAN AND PULLEY KIT
PART NUMBER 427-71699ZT



EXHAUST KIT #64
PART NUMBER 25-6510

DECALS

Decals

Blo-Vac

	Part Number	Description	Quantity		Part Number	Description	Quantity
1	425-4201	Front Logo Decal	1	8	425-4209	Hydro Decal	1
2	425-4212	Data Plate	1	9	425-4206	Danger Decal	2
3	425-4210	Top Dash Decal	1	10	425-4204	Made in the USA Decal	1
4	425-4207	Blower Decal	1	11	425-4211	Dash Controls Decal	1
5	425-4202	Left Logo Decal		12	425-4205	Hot Decal	1
	425-4203	Right Logo Decal	2				
6	425-425	Safety Cover Decal	1				
	427-427	Safety Cover Decal					
	428-428	Safety Cover Decal					
7	425-4208	Pinch Decal	1				



HURRICANE BLO-VAC INC.
 3675 WHITEHALL RD.
 MUSKEGON, MI 49445
 231-578-7569

MODEL: _____

SERIAL: _____

DEFLECTOR CONTROLS
 FRONT DEFLECTOR REAR
 CLOSE OPEN

⚠ DANGER
⚠ WARNING

	WARNING: DO NOT SMOKE WHILE REFUELING. DO NOT FILL TANK WHILE ENGINE IS RUNNING OR WHILE ENGINE IS HOT.		WARNING: THROWN OBJECTS CAN CAUSE SERIOUS INJURY.		ALWAYS WEAR HEARING AND EYE PROTECTION.
	DANGER: KEEP SHIELDS AND COVERS IN PLACE WHILE MACHINE IS IN OPERATION. KEEP HANDS AWAY FROM MOVING MACHINERY.		KEEP BYSTANDERS AWAY.		BEFORE PERFORMING ANY SERVICE OR MAINTENANCE, DISCONNECT SPARK PLUG WIRE. MAKE SURE THROTTLE IS IN STOP POSITION.
	WARNING: IMPROPER USE OR CARE OF THIS BLOWER OR FAILURE TO WEAR PROPER PROTECTION CAN RESULT IN SERIOUS INJURY.		DANGER: KEEP HANDS AND FEET AWAY FROM INTAKE AND DISCHARGE AREA. ROTATING FAN WILL CAUSE SERIOUS INJURY.		USE EXTREME CAUTION OPERATING ON SLOPES. MOVE SLOWLY AND AVOID SUDDEN OR JERKY MOVEMENTS.
	WARNING: TO PREVENT FIRE, KEEP ENGINE AND PUMP COMPARTMENTS CLEAN. ESPECIALLY IN EXHAUST AREA.		READ AND UNDERSTAND THE OWNER'S MANUAL. PAY PARTICULAR ATTENTION TO ALL SECTIONS REGARDING SAFETY.		

⚠ DANGER
⚠ WARNING

INSTRUCTIONS FOR CONVERTING FROM BLOWER TO VACUUM MODE:

1. Set Parking brake and shut down engine. Wait for all motion to completely stop.
2. Remove safety cover keeper pin. Rotate safety cover counter clockwise (left) and pull straight out to remove.
3. Install vacuum hose adapter straight into opening, aligning the four locking bolts with the slotted holes in adapter, and turn clockwise (right) to lock. Reinstall safety cover keeper pin.
4. Install the discharge hose by aligning the adapter to discharge opening and securing with 2 keeper pins. Secure the other end of discharge hose to your enclosed container. Open both deflectors and leave them open.
5. Reverse procedure to convert back to the blower mode.

WARNING: DANGER: Personal injury, dismemberment or death can result from tampering with, disconnecting or otherwise rendering inoperative the SAFETY CUT OFF SWITCH. Engine will fail to start with a damaged safety switch or wiring harness.



⚠ CAUTION
PINCH POINT

HYDROSTATIC OIL FILL
USE ONLY MOBIL¹ 15W-50 SYNTHETIC
USE DIPSTICK
DO NOT OVERFILL

⚠ DANGER
KEEP HANDS and FEET AWAY



⚠ DANGER
⚠ WARNING

DO NOT OPERATE THIS EQUIPMENT WITHOUT PROPER AUTHORIZATION AND TRAINING. IT IS THE OPERATOR'S RESPONSIBILITY TO READ AND COMPLETELY UNDERSTAND ALL DANGERS, WARNINGS, CAUTIONS AND INSTRUCTIONS ON THE EQUIPMENT AND IN THE OPERATOR'S MANUAL.

FORWARD **REVERSE**

FUEL FILL (GASOLINE ONLY)

OIL ALERT

THROTTLE

STOP

OFF **RUN+LIGHTS** **RUN** **START**

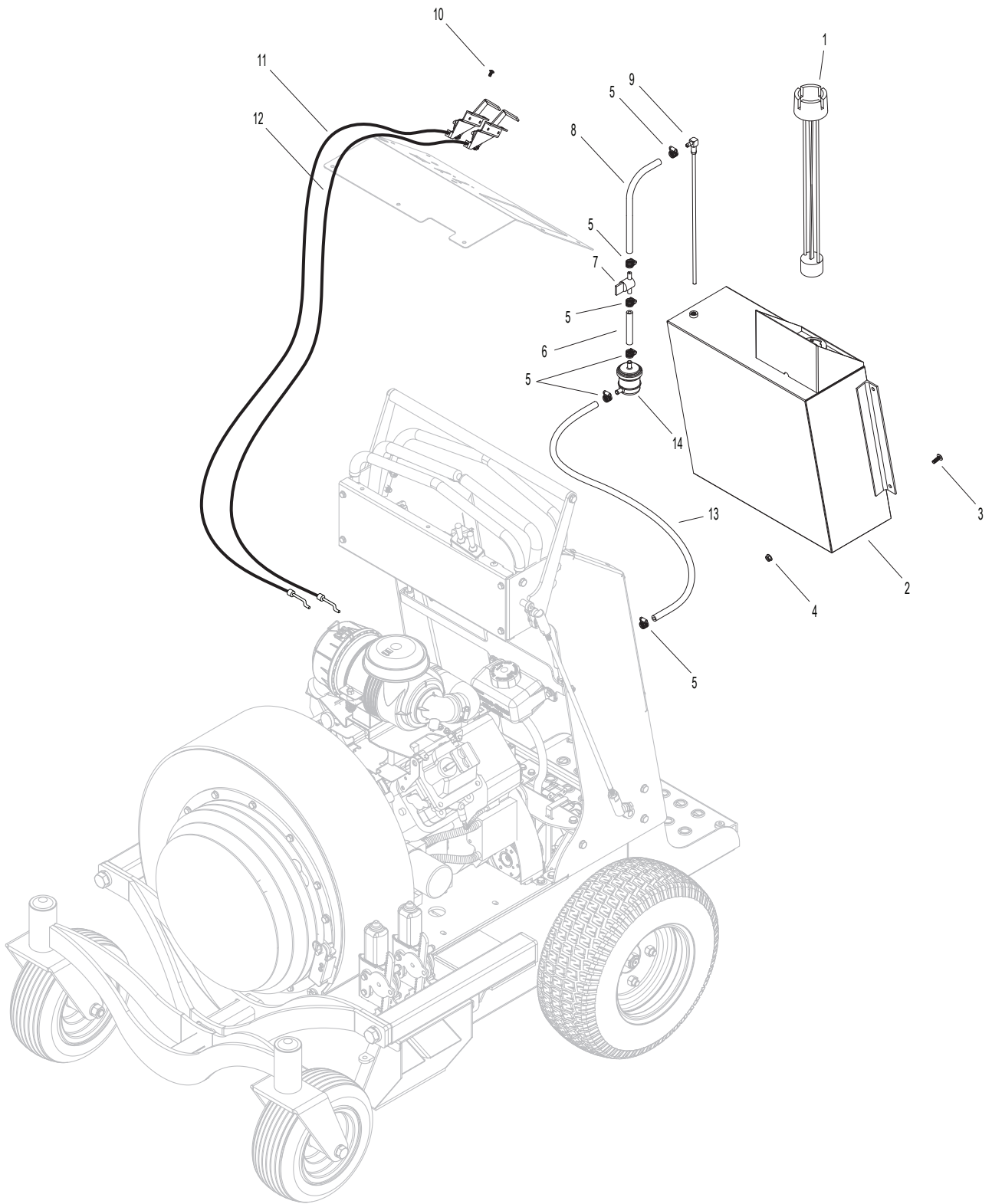
ENGAGED **DISENGAGED**

(P) PARKING BRAKE
 RAISE TO ENGAGE
 LOWER TO DISENGAGE

FUEL AND THROTTLE COMPONENTS

	Part Number	Description	Quantity		Part Number	Description	Quantity
1	1101-73601	Fuel Cap W/Gauge	1	7	1101-73805	Ball Valve Fuel Shutoff	1
2	1101-02002	Fuel Tank	1	8	425-12-14650	Fuel Line 1/4 x 6.5	1
3	15091	1/4-20 x 3/4 FPHMS	4	9	1101-73811	Fuel Pickup	1
4	15101	1/4-20 Flange Nut	4	10	15090	10-32 BT Hex Screw	4
5	425-12-1414	Spring Hose Clamp	6	11	425-1041-76010	Throttle Cable	1
6	425-12-14350	Fuel Line 1/4 x 3.5	1	12	425-1041-76010	Choke Cable	1
				13	425-12-14280	Fuel Line 1/4 x 28	1
				14	110-17-5403	Fuel Filter	1

FUEL AND THROTTLE COMPONENTS



ELECTRICAL COMPONENTS

Electrical

Blo-Vac

	Part Number	Description	Quantity		Part Number	Description	Quantity
1	106-17-4001	U1 Battery	1	13	104-17-2805	Warning Light	1
2	106-18-1802	Positive Battery Cable	1	14	106-17-2817	Relay	1
3	106-18-1803	Negative Battery Cable	1	15	106-17-5618	Safety Switch 1P	3
4	104-17-5205	Tach	1	16	101-18-1802	Deflector Motor Left	2
	106-18-1804	Tach Harness	1	17	106-17-5420	Work Light	2
5	106-17-3005	Switch Extension (Red)	2	18	106-18-1822	Main Wiring Harness	1
6	106-17-2806	Switch Seal	2	19	15106	10-32 Keps Nut	8
7	106-17-3007	Reversing Switch	2	20	15107	5/16-18 Flange Nut	2
8	104-17-5606	Ignition Switch	1	21	15105	10-32 Machine Screw	8
9	104-17-5607	Ignition Switch Nut	1	22	15108	5/16-18 x 3/4 Flange Bolt	2
10	104-17-5608	Ignition Switch Key	2	23	15050	1/4-20 Stainless Machine Screw	2
11	101-17-5612	Safety Switch 2P	2				
12	106-17-4012	Battery Box With Strap	1	24	15109	1/4-20 Flange Nut	2

ELECTRICAL COMPONENTS

