



# Parts Manual

Mfg. No: 5901807-Z3000  
Z3000, Hurricane Series Stand-On Debris  
Blower



5109061 - Tire, Debris Blower, Pavement Tire 20.5 X 8.0-10. ....

Not For  
Reproduction

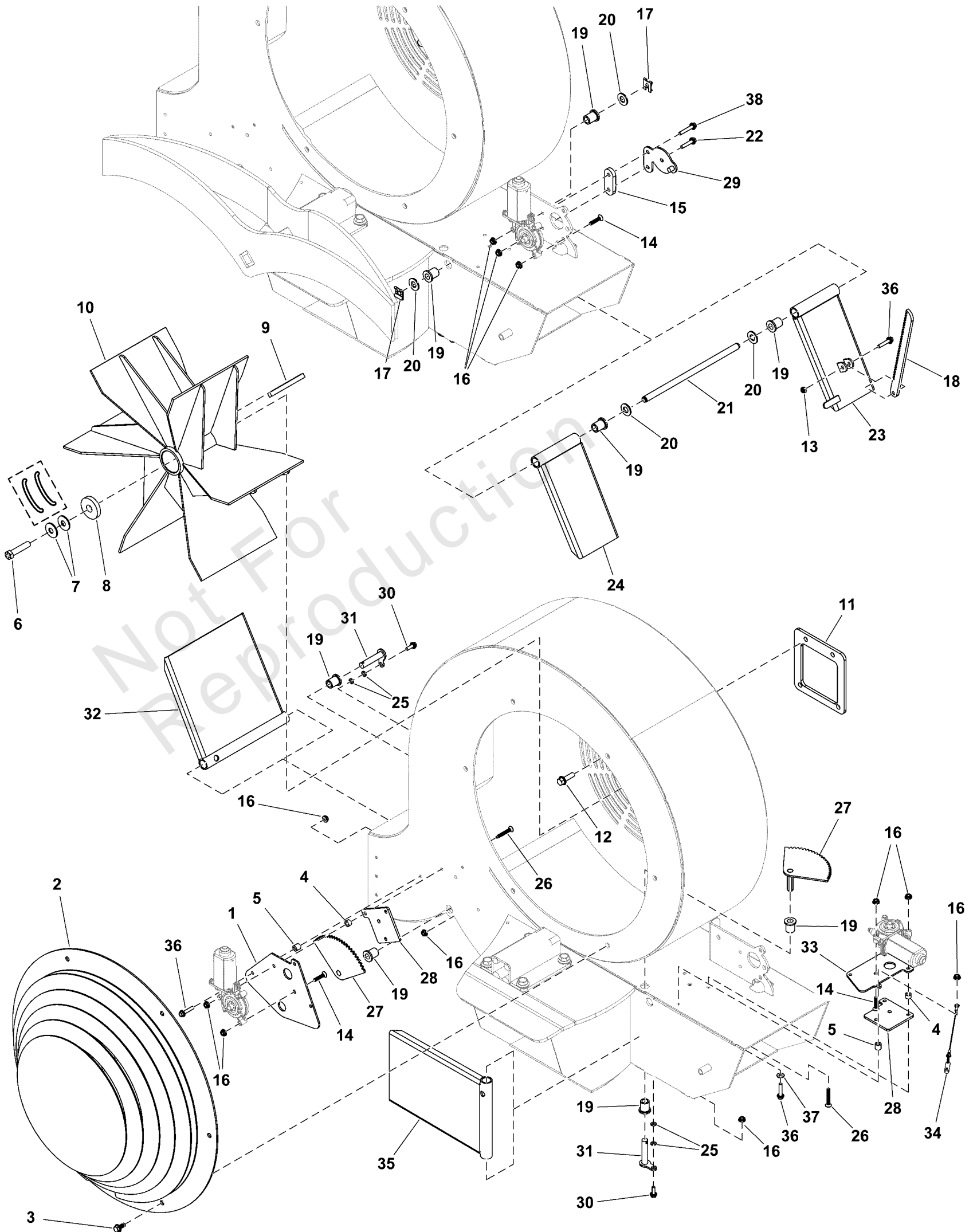
| <b>Model Components</b>                             | <b>Page</b> |
|---|-------------|
| Blower Group.....                                   | 4           |
| Decal Group - Brand and Model.....                  | 6           |
| Decal Group - Safety and Operational.....           | 8           |
| Electrical Group S/N: 4002219158 and Below.....     | 10          |
| Electrical Group S/N: 4002219159 and Above.....     | 12          |
| Electrical Schematic S/N: 4002219158 and Below..... | 14          |
| Electrical Schematic S/N: 4002219159 and Above..... | 16          |
| Engine Group.....                                   | 18          |
| Fuel Tank and Hose Group.....                       | 20          |
| Handle Bar Group.....                               | 22          |
| Hydraulic Group.....                                | 24          |
| Instrument Control Panel Group.....                 | 26          |
| Main Frame Group.....                               | 28          |
| Motion Control Group.....                           | 30          |
| Parking Brake Group S/N: 4002219158 and Below.....  | 32          |
| Parking Brake Group S/N: 4002219159 and above.....  | 34          |
| Wheel and Tire Group.....                           | 36          |
| Torque Specification Chart.....                     | 38          |

Not For  
Reproduction

# Blower Group

Note: Unless noted otherwise, use the standard torque specifications

Mfg. No: 5901807-Z3000



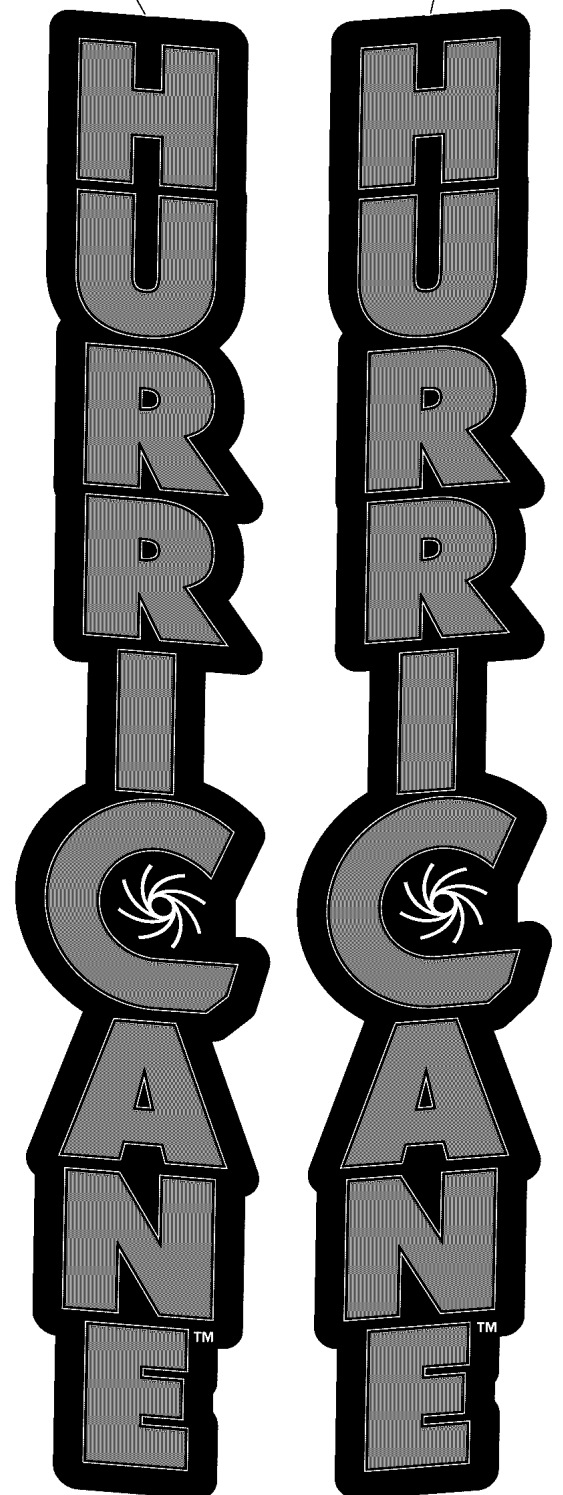
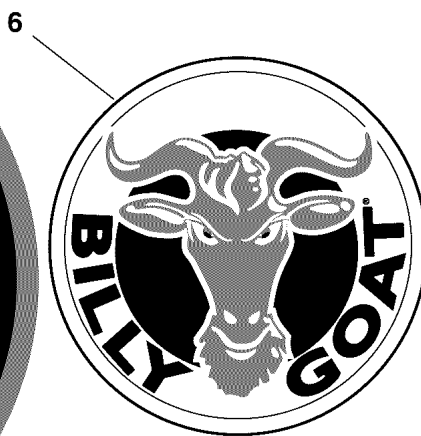
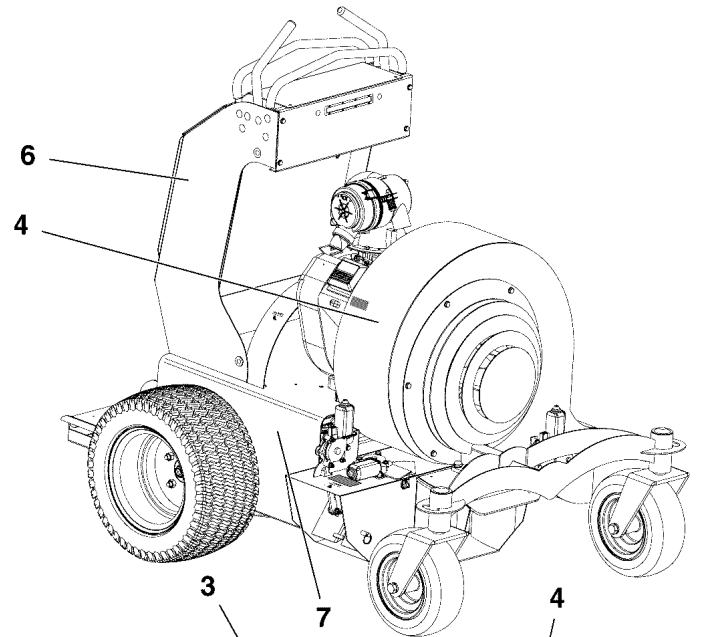
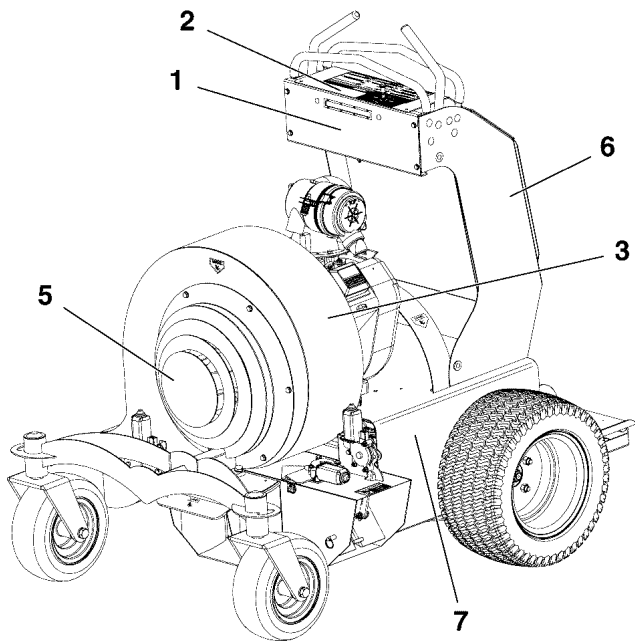
## Blower Group

| REF NO | PART NO     | QTY | DESCRIPTION   |
|--------|-------------|-----|---|
| 1      | 5107338AFS  | 1   | PLATE   |
| 2      | 5418554AFS  | 1   | COVER   |
| 3      | 703354      | 6   | SCREW, 5/16-18  |
| 4      | 5107396FS   | 4   | SPACER  |
| 5      | 5106902FS   | 3   | SPACER  |
| 6      | 5107308FS   | 1   | BOLT<br>-(Torque impeller mounting bolt to 140 ft-lbs (190 Nm)) |
| 7      | 5108105FS   | 1   | WASHER, BEVELED   |
| 8      | 5107199FS   | 1   | WASHER  |
| 9      | 5106823FS   | 1   | KEY   |
| 10     | 5419590FS   | 1   | IMPELLER  |
| 11     | 5107511FS   | 1   | PLATE, Spacer   |
| 12     | 5025390X8FS | 4   | BOLT  |
| 13     | 5025095SM   | 1   | NUT, 1/4-20 HEX NYLON   |
| 14     | 5106874FS   | 4   | SCREW   |
| 15     | 5107334AAFS | 1   | PLATE, Spacer   |
| 16     | 5025126FS   | 15  | NUT   |
| 17     | 5106951FS   | 2   | CLIP  |
| 18     | 5107335FS   | 1   | PLATE   |
| 19     | 5106943FS   | 8   | BUSHING   |
| 20     | 5025158SM   | 3   | WASHER, 1/2" SAE  |
| 21     | 5107281FS   | 1   | ROD, SUPPORT  |
| 22     | 5106873FS   | 1   | BOLT  |
| 23     | 5107483FS   | 1   | DEFLECTOR   |
| 24     | 5107772FS   | 1   | DEFLECTOR   |
| 25     | 5025169FS   | 4   | WASHER  |
| 26     | 5106903FS   | 4   | SCREW   |
| 27     | 5107339AAFS | 2   | DEFLECTOR   |
| 28     | 5107332AAFS | 2   | PLATE, SPACER   |
| 29     | 5107333FS   | 1   | KEEPER  |
| 30     | 5106872FS   | 2   | BOLT  |
| 31     | 5107337FS   | 2   | PIN   |
| 32     | 5107496FS   | 1   | DEFLECTOR   |
| 33     | 5107329AFS  | 1   | PLATE<br>-(Plate only, motor shown for reference only.)         |
| 34     | 5107886FS   | 1   | PIN   |
| 35     | 5107468FS   | 1   | DEFLECTOR   |
| 36     | 5106919FS   | 4   | BOLT  |
| 37     | 703332      | 1   | WASHER  |
| 38     | 5025668FS   | 1   | BOLT  |

# Decal Group - Brand and Model

Note: Unless noted otherwise, use the standard torque specifications

Mfg. No: 5901807-Z3000



## *Decal Group - Brand and Model*

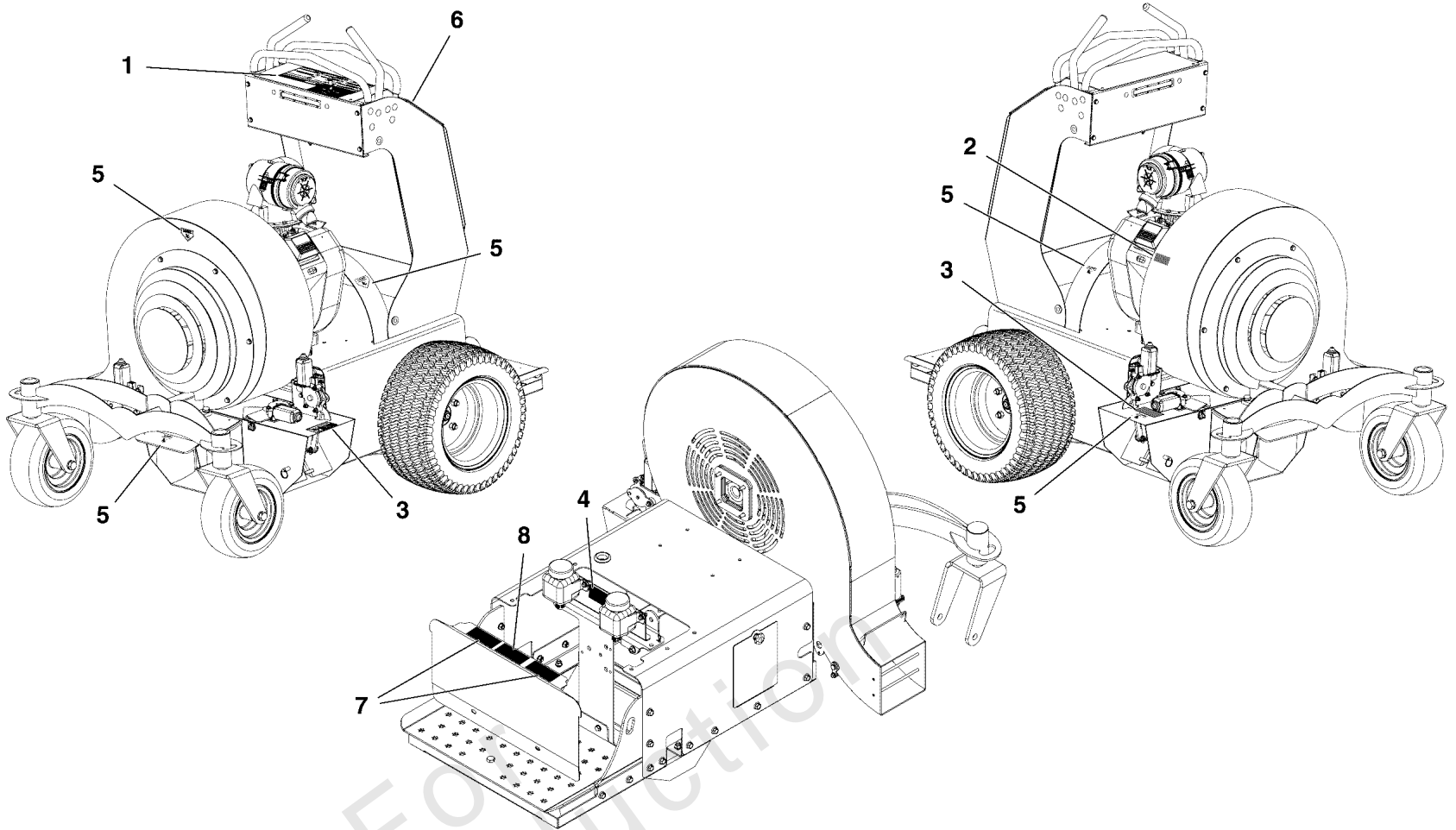
| REF NO | PART NO    | QTY | DESCRIPTION                        |
|--------|------------|-----|------------------------------------|
| 1      | 5107410    | 1   | DECAL, Z3000 BADGE                 |
| 2      | 5107412    | 1   | DECAL, Z3000 TOP PANEL             |
| 3      | 5110335    | 1   | DECAL, Z3000 HURRICANE_VERT, BG,LH |
| 4      | 5110339    | 1   | DECAL, Z3000 HURRICANE_VERT, RH    |
| 5      | 5110338    | 1   | DECAL, Z3000 FRONT LOGO            |
| 6      | 5107557    | 2   | LABEL, PRODUCT DECAL LG CIRCLE     |
| 7      | 80082701FS | 2   | DECAL, BRAND                       |

Not For Reproduction

# Decal Group - Safety and Operational

Note: Unless noted otherwise, use the standard torque specifications

Mfg. No: 5901807-Z3000



1

OPEN

OPEN

OPEN

CLOSE ALL

**⚠ DANGER**

**⚠ WARNING**

|  |   |  |
|--|---|--|
| <b>WARNING: DO NOT SMOKE WHILE REFUELING. DO NOT FILL TANK WHILE ENGINE IS RUNNING OR WHILE ENGINE IS HOT.</b>         | <b>WARNING: THROWN OBJECTS CAN CAUSE SERIOUS INJURY.</b>  | <b>ALWAYS WEAR HEARING AND EYE PROTECTION.</b>   |
| <b>DANGER: KEEP SHIELDS AND COVERS IN PLACE WHILE MACHINE IS IN OPERATION. KEEP HANDS AWAY FROM MOVING MACHINERY.</b>  | <b>KEEP BYSTANDERS AWAY.</b>  | <b>BEFORE PERFORMING ANY SERVICE OR MAINTENANCE, DISCONNECT SPARK PLUG WIRE. MAKE SURE THROTTLE IS IN STOP POSITION.</b> |
| <b>WARNING: IMPROPER USE OR CARE OF THIS BLOWER OR FAILURE TO WEAR PROPER PROTECTION CAN RESULT IN SERIOUS INJURY.</b> | <b>DANGER: KEEP HANDS AND FEET AWAY FROM INTAKE AND DISCHARGE AREA. ROTATING FAN WILL CAUSE SERIOUS INJURY.</b> | <b>USE EXTREME CAUTION OPERATING ON SLOPES. MOVE SLOWLY AND AVOID SUDDEN OR JERKY MOVEMENTS.</b>                         |
| <b>WARNING: TO PREVENT FIRE, KEEP ENGINE AND PUMP COMPARTMENTS CLEAN, ESPECIALLY IN EXHAUST AREA.</b>                  | <b>READ AND UNDERSTAND THE OWNER'S MANUAL. PAY PARTICULAR ATTENTION TO ALL SECTIONS REGARDING SAFETY.</b>       |  |

3

**⚠ CAUTION**

**PINCH POINT**

7

**TRANSAXLE BYPASS VALVE**

**PULL CABLE UP AND SIDWAYS TO ENGAGE BYPASS**

**⚠ DO NOT PUSH OR TOW MACHINE WITHOUT FIRST ENGAGING THE TRANSAXLE BYPASS. TRANSAXLE DAMAGE MAY OCCUR.**

2

**EMERGENCY BRAKE RELEASE**

**LIFT LEVER**

8

XS-4211

5

**⚠ DANGER**

**KEEP HANDS AND FEET AWAY**

4

**HYDROSTATIC OIL FILL**

**USE ONLY MOBIL 1 15W-50 SYNTHETIC**

**DO NOT OVERFILL**

6

FORWARD

REVERSE

FUEL FILL (GASOLINE ONLY)

OIL ALERT

FORWARD

REVERSE

THROTTLE

THROTTLE

**PARKING BRAKE**

RED DOTTED LINE = BRAKE AUTOMATICALLY ENGAGED

GRAY FILL = BRAKE AUTOMATICALLY DISENGAGED

**⚠ WARNING**



## ***Decal Group - Safety and Operational***

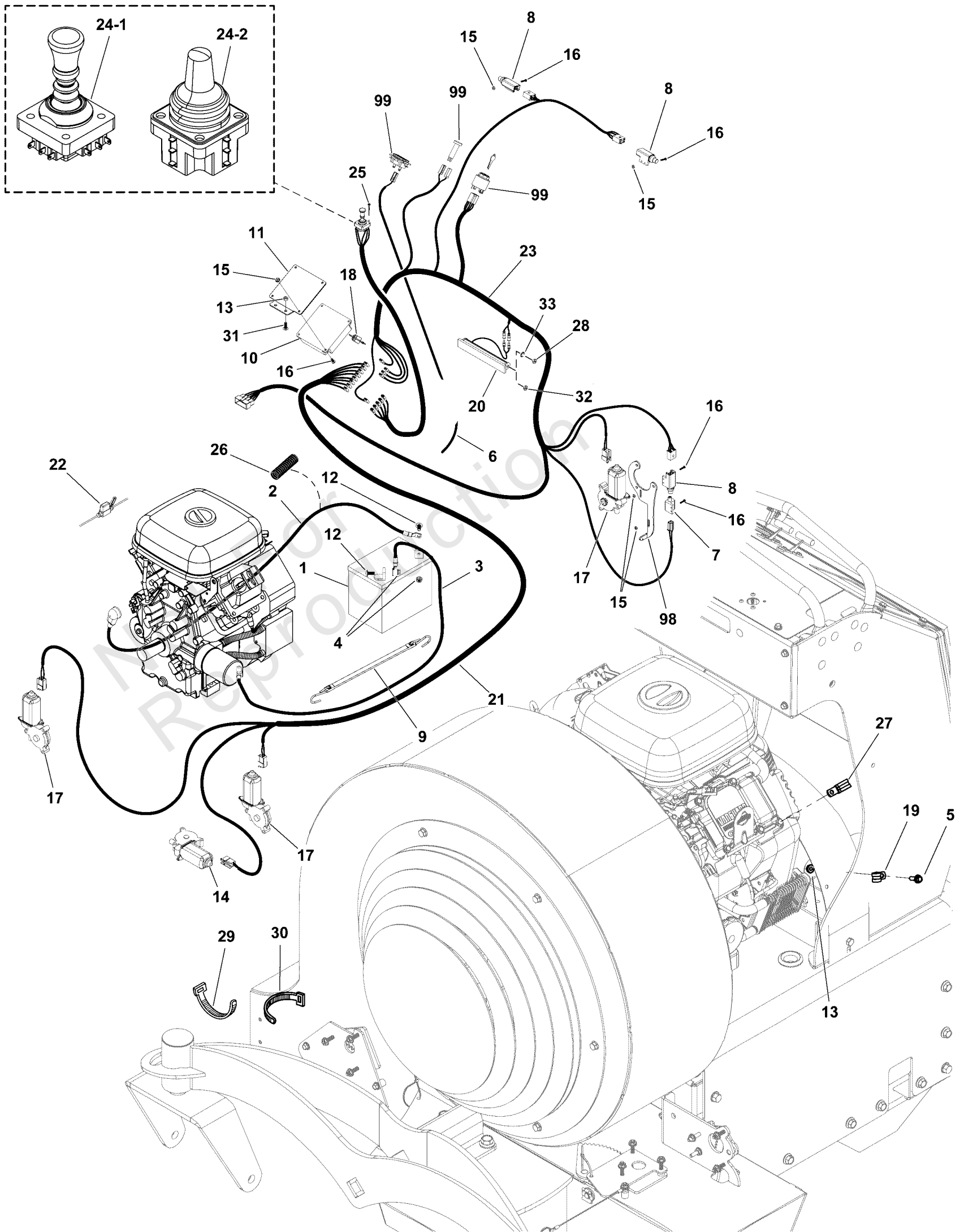
| <b>REF NO</b> | <b>PART NO</b> | <b>QTY</b> | <b>DESCRIPTION</b>             |
|---------------|----------------|------------|--------------------------------|
| 1             | 5107509        | 1          | DECAL, DASH, JOYSTICK          |
| 2             | 5106771        | 1          | DECAL, HOT                     |
| 3             | 5106773        | 2          | DECAL, PINCH                   |
| 4             | 5106774        | 1          | DECAL, HYDRO                   |
| 5             | 5106775        | 5          | DECAL, DANGER                  |
| 6             | 5106776        | 1          | DECAL, DASH CONTROLS           |
| 7             | 5106777        | 2          | DECAL, TRANS BYPASS            |
| 8             | 5106778        | 1          | DECAL, EMERGENCY BRAKE RELEASE |

Not For Reproduction

# Electrical Group S/N: 4002219158 and Below

Note: Unless noted otherwise, use the standard torque specifications

Mfg. No: 5901807-Z3000



## Electrical Group S/N: 4002219158 and Below

| REF NO | PART NO      | QTY | DESCRIPTION   |
|--------|--------------|-----|---|
| 1      | -----        | 1   | BATTERY, 11U1L, 350 CCA<br>-(BCIU1, 350 CCA)  |
| 2      | 5107244      | 1   | BATTERY CABLE, POS, 24.69, 5/16-5/16  |
| 3      | 5107245      | 1   | BATTERY CABLE, NEG, 13.50, 5/16-3/8   |
| 4      | 5025127      | 2   | NUT, 5/16-18 HEX SERRATED FLANGE (SMALL)  |
| 5      | 5106872      | 2   | BOLT, 1/4-20 X 3/4, FLANGE, CZ  |
| 6      | 5107043      | 1   | WIRE HARNESS, TACH X3,Z3<br>-(End without terminal is wrapped around spark plug wire and secure with wire tie.) |
| 7      | 5021769      | 1   | SWITCH, PLUNGER, N.C.   |
| 8      | 5106950      | 3   | SWITCH, SAFETY(2P)  |
| 9      | 5106918      | 1   | STRAP, BATTERY  |
| 10     | 5601264      | 1   | KIT, RELAY, CONTROL MODULE<br>-(Includes reference number #18).   |
| 11     | 5107407AA    | 1   | BRACKET, RELAY MOUNT - BLK  |
| 12     | 5025145X6    | 2   | BOLT, 5/16-18 X 3/4, CARRIAGE, GD5, CZ  |
| 13     | 5025126      | 4   | NUT, 1/4-20 HEX SERR. FLANGE  |
| 14     | 5106953      | 1   | MOTOR, DEFLECTOR, LEFT  |
| 15     | 80013127     | 12  | NUT, #10-32, HEX, KEPS, ZC/CL   |
| 16     | 5106875      | 12  | SCREW, #10-32 X 3/4, ALLEN, SS  |
| 17     | 5106952FS    | 3   | DEFLECTOR, Motor  |
| 18     | 5107310      | 1   | CIRCUIT BREAKER, 15A A-RESET  |
| 19     | 5107053      | 2   | CLAMP, VINYL INSULATED, .50   |
| 20     | 5420644      | 1   | HEADLIGHT ASSY - LED  |
| 21     | 5107313      | 1   | WIRE HARNESS, DEFLECTOR, Z3000 JOYSTICK   |
| 22     | 5107311      | 1   | FUSE HOLDER, Z3000  |
| 23     | 5107312      | 1   | WIRE HARNESS, MAIN, Z3000 JOYSTICK  |
| 24-1   | 5601265      | 1   | KIT, JOYSTICK UPDATE<br>-(S/N: 4001275566 and below)  |
| 24-2   | 5108766      | 1   | JOYSTICK ASSEMBLY, DEBRIS BLOWER<br>-(S/N: 4001275567 and above)  |
| 25     | 5106875FS    | 4   | SCREW (#10-32 X 3/4, ALLEN, SS)   |
| 26     | 5050927X17P5 | 1   | WIRE LOOM, 3/8 ID X 17.5 IN   |
| 27     | 5107987      | 2   | CLAMP, VINYL INSULATED, .75   |
| 28     | 5025672      | 2   | NUT, HEX, M5X.8MM, NYLON INSERT<br>-(For headlights with 5MM studs)   |
| 29     | 5021029      | 2   | TIE, SELF-LOCKING, 12"  |
| 30     | 5021030      | 8   | TIE, SELF-LOCKING, 6"   |
| 31     | 80003518     | 2   | BOLT,1/4-20X0.750,GR5,STD NECK,SQ,ZC/CL   |
| 32     | 5025669      | 2   | NUT, HEX, M6-1, NYLON INSERT<br>-(For headlights with 6MM studs)  |
| 33     | 5025673      |     | WASHER, 5MM, STAR, CZ<br>-(For headlights with 5MM studs)   |
| 98     | -----        | 0   | Refer to: Parking Brake Group   |
| 99     | -----        | 0   | Refer to: Instrument Control Panel Group  |



## Electrical Group S/N: 4002219159 and Above

| REF NO | PART NO      | QTY | DESCRIPTION   |
|--------|--------------|-----|---|
| 1      | -----        | 1   | BATTERY, 11U1L, 350 CCA<br>-(BCIU1, 350 CCA)  |
| 2      | 5107244FS    | 1   | CABLE, BATTERY, RED   |
| 3      | 5107245FS    | 1   | CABLE, BATTERY, BLACK   |
| 4      | 5025127SM    | 2   | NUT, 5/16-18 HEX SERR   |
| 5      | 5106872FS    | 2   | BOLT  |
| 6      | 5107043FS    | 1   | HARNESS, WIRING<br>-(End without terminal is wrapped around spark plug wire and secure with wire tie.)              |
| 7      | 5021769SM    | 1   | SWITCH, PLUNGER, N.C.   |
| 8      | 5106950FS    | 2   | SWITCH  |
| 9      | 5106918FS    | 1   | STRAP, Battery  |
| 10     | 5601264      | 1   | KIT, RELAY, CONTROL MODULE<br>-(Includes reference number #18).   |
| 11     | 5107407AAFS  | 1   | MOUNT   |
| 12     | 5025145X6SM  | 2   | BOLT, 5/16-18 X 3/4",   |
| 13     | 5025126FS    | 4   | NUT   |
| 14     | 5106953FS    | 1   | MOTOR   |
| 15     | 1928919SM    | 12  | NUT-HEX & WASHER ASMY   |
| 16     | 5106875FS    | 12  | SCREW (#10-32 X 3/4, ALLEN, SS)   |
| 17     | 5106952FS    | 3   | DEFLECTOR, Motor  |
| 18     | 5107310FS    | 1   | BREAKER, CIRCUIT, 15A   |
| 19     | 5107053      | 2   | CLAMP, VINYL INSULATED, .50   |
| 20     | 84006903     | 1   | HEADLIGHT ASSEMBLY  |
| 21     | 5107313FS    | 1   | HARNESS, WIRING   |
| 22     | 5107311FS    | 1   | HOLDER, FUSE  |
| 23     | 5107312FS    | 1   | HARNESS, WIRING   |
| 24-1   | 5601265      | 1   | KIT, JOYSTICK UPDATE<br>-(S/N: 4001275566 and below)  |
| 24-2   | 5108766FS    | 1   | KIT, Joystick<br>-(S/N: 4001275567 and above)   |
| 25     | 5106875FS    | 4   | SCREW (#10-32 X 3/4, ALLEN, SS)   |
| 26     | 5050927X17P5 | 1   | WIRE LOOM, 3/8 ID X 17.5 IN   |
| 27     | 5107987FS    | 2   | CLAMP   |
| 28     | 5025672      | 2   | NUT, HEX, M5X.8MM, NYLON INSERT<br>-(For headlights with 5MM studs)(Torque headlight mounting nut to 16-19 in-lbs.) |
| 29     | 5021029SM    | 2   | TIE, Cable 11" Long   |
| 30     | 5021030SM    | 8   | TIE WRAP, 5-1/2" LONG   |
| 31     | 703575       | 2   | BOLT, 1/4-20X.750, SQ   |
| 32     | 5025669      | 2   | NUT, HEX, M6-1, NYLON INSERT<br>-(For headlights with 6MM studs)  |
| 33     | 5025673      | 2   | WASHER, 5MM, STAR, CZ<br>-(For headlights with 5MM studs)   |
| 34     | 84008626     | 1   | SWITCH, Sealed  |
| 35     | 5104736FS    | 1   | CLIP  |
| 36     | 84008627     | 1   | WIRE HARNESS, JUMPER, BRAKE SWITCH  |
| 98     | -----        | 0   | Refer to: Parking Brake Group   |
| 99     | -----        | 0   | Refer to: Instrument Control Panel Group  |

# Electrical Schematic S/N: 4002219158 and Below

Note: Unless noted otherwise, use the standard torque specifications

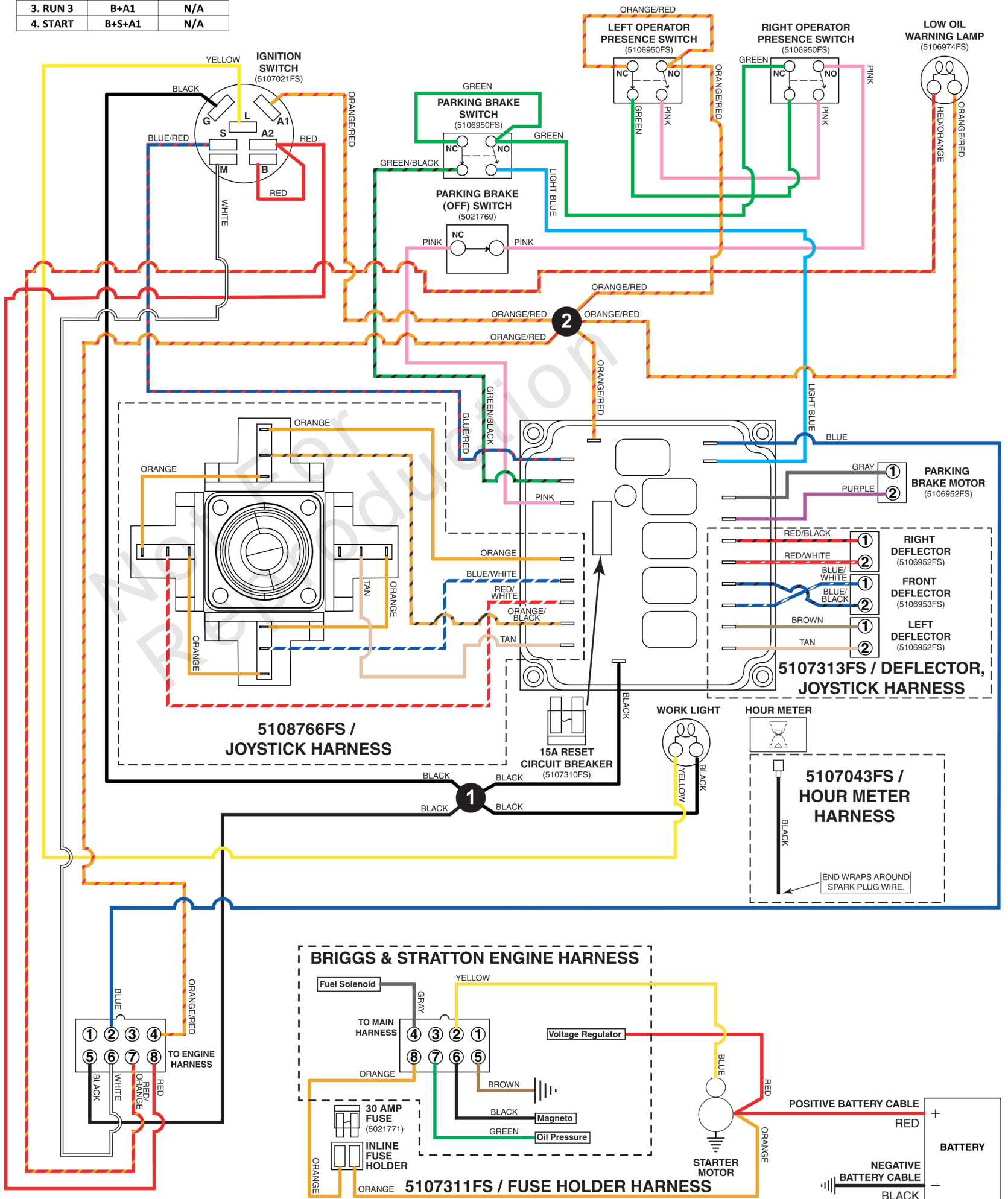
Mfg. No: 5901807-Z3000

## 5107312FS / MAIN WIRE HARNESS - BRIGGS & STRATTON 613477 ENGINES

5107312A

(If internal schematic of the switch is not shown, the image of the switch represents the back view of the connector as it is connected to the switch.)

| IGNITION SWITCH |           |           |
|-----------------|-----------|-----------|
| POSITION        | CONTACT 1 | CONTACT 2 |
| 1. OFF          | M+G+A1    | N/A       |
| 2. RUN 1        | B+A1      | L+A2      |
| 3. RUN 3        | B+A1      | N/A       |
| 4. START        | B+S+A1    | N/A       |



**Electrical Schematic S/N: 4002219158 and Below**

---

| REF NO    | PART NO   | QTY | DESCRIPTION     |
|-----------|-----------|-----|-----------------|
| 5107312FS | 5107312FS | 1   | HARNESS, WIRING |
| 5108766FS | 5108766FS | 1   | KIT, Joystick   |
| 5107313FS | 5107313FS | 1   | HARNESS, WIRING |
| 5107043FS | 5107043FS | 1   | HARNESS, WIRING |
| 5107311FS | 5107311FS | 1   | HOLDER, FUSE    |

Not For Reproduction



# Electrical Schematic S/N: 4002219159 and Above

Note: Unless noted otherwise, use the standard torque specifications

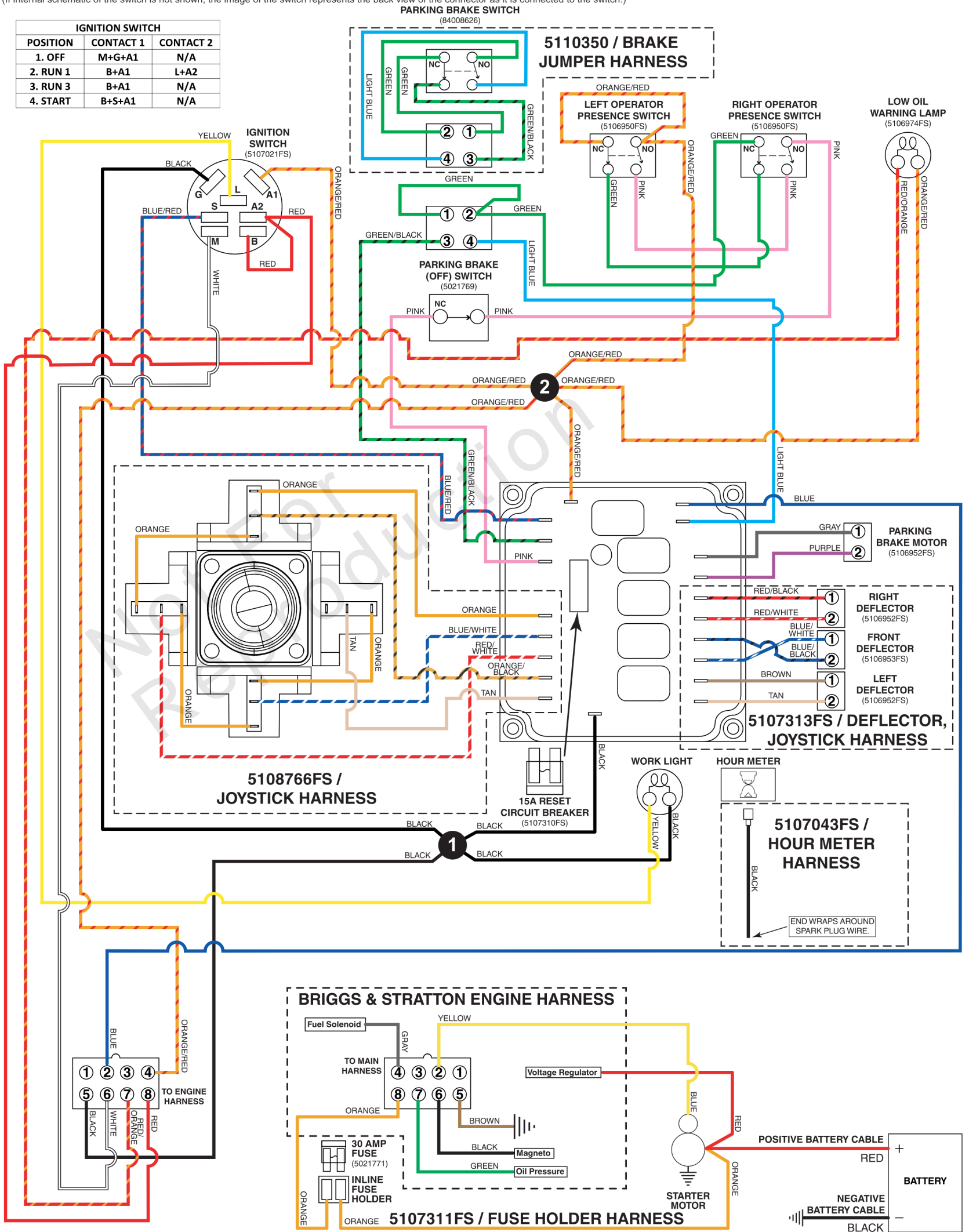
Mfg. No: 5901807-Z3000

## 5107312FS / MAIN WIRE HARNESS - BRIGGS & STRATTON 613477 ENGINES

5107312B

(If internal schematic of the switch is not shown, the image of the switch represents the back view of the connector as it is connected to the switch.)

| IGNITION SWITCH |           |           |
|-----------------|-----------|-----------|
| POSITION        | CONTACT 1 | CONTACT 2 |
| 1. OFF          | M+G+A1    | N/A       |
| 2. RUN 1        | B+A1      | L+A2      |
| 3. RUN 3        | B+A1      | N/A       |
| 4. START        | B+S+A1    | N/A       |





**Electrical Schematic S/N: 4002219159 and Above**

---

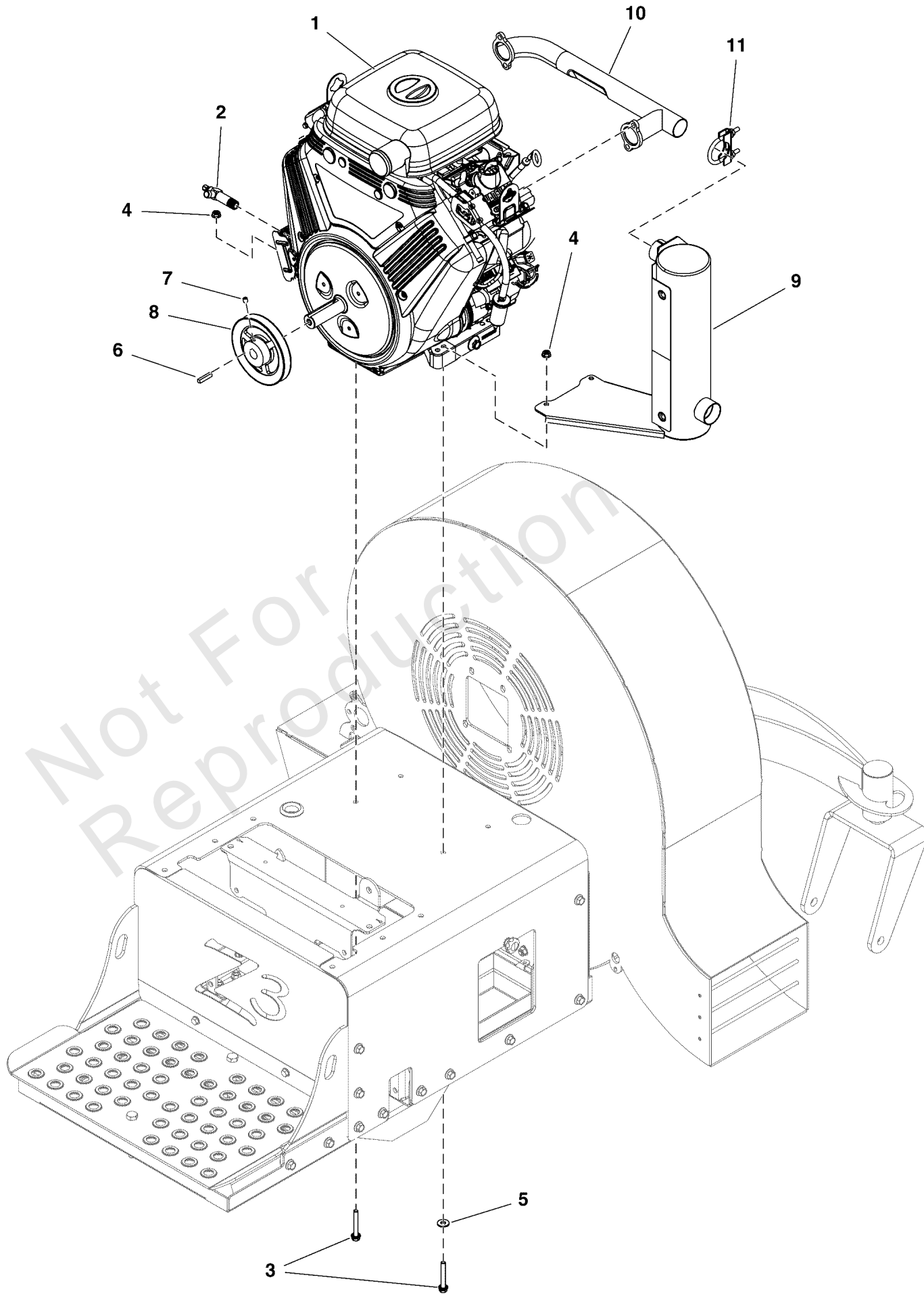
| REF NO    | PART NO   | QTY | DESCRIPTION                        |
|-----------|-----------|-----|------------------------------------|
| 5107312FS | 5107312FS | 1   | HARNESS, WIRING                    |
| 5108766FS | 5108766FS | 1   | KIT, Joystick                      |
| 5107313FS | 5107313FS | 1   | HARNESS, WIRING                    |
| 5107043FS | 5107043FS | 1   | HARNESS, WIRING                    |
| 5110350   | 84008627  | 1   | WIRE HARNESS, JUMPER, BRAKE SWITCH |
| 5107311FS | 5107311FS | 1   | HOLDER, FUSE                       |

Not For Reproduction

# Engine Group

Note: Unless noted otherwise, use the standard torque specifications

Mfg. No: 5901807-Z3000



Not For  
Reproduction

## Engine Group

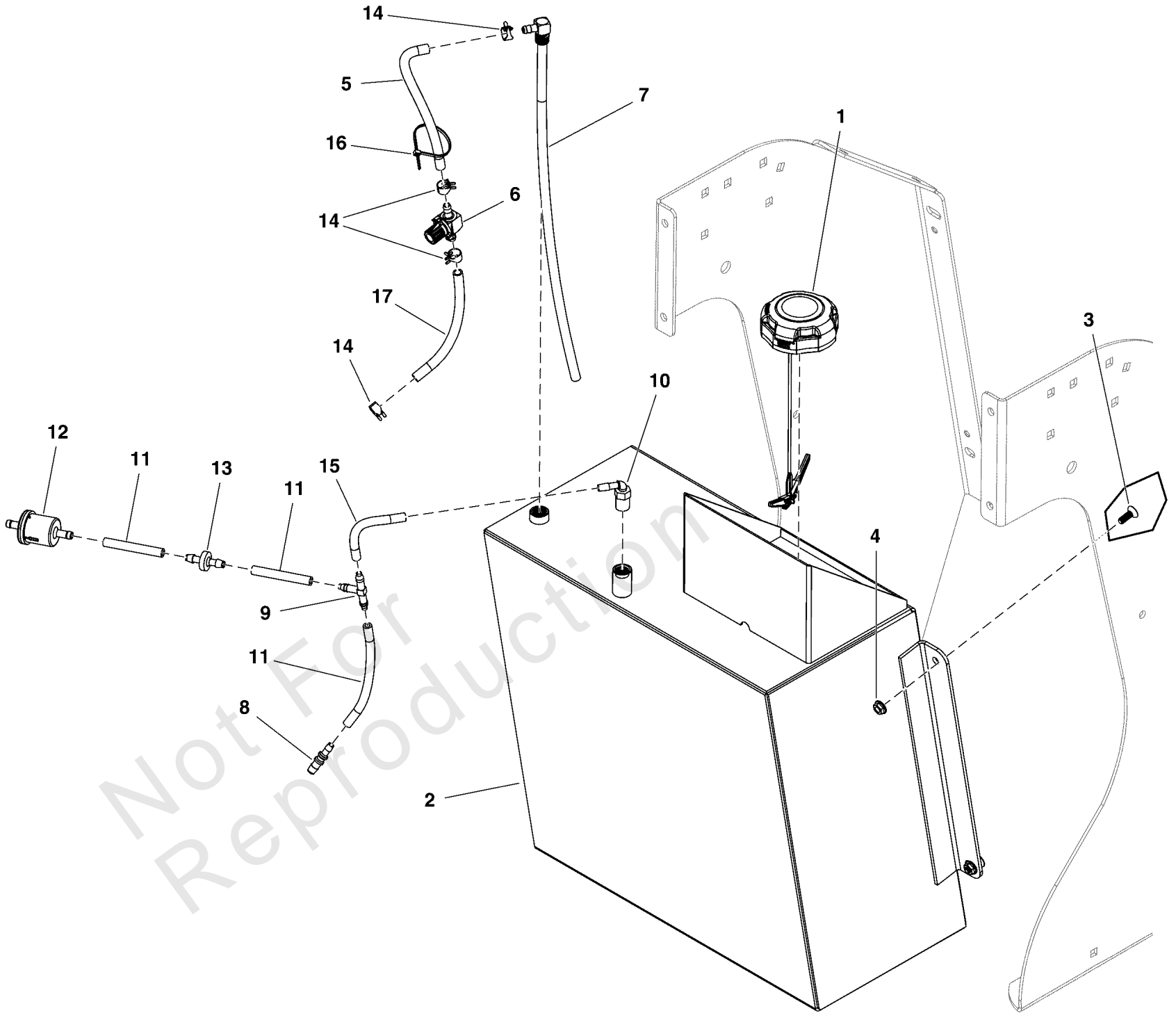
| REF NO | PART NO      | QTY | DESCRIPTION   |
|--------|--------------|-----|---|
| 1      | -----        | 1   | ENGINE, VANGUARD, 993cc                               |
| 2      | 5107284FS    | 1   | VALVE, OIL DRAIN SHUT OFF                             |
| 3      | 5107304FS    | 4   | BOLT  |
| 4      | 5025127SM    | 4   | NUT, 5/16-18 HEX SERR                                 |
| 5      | 5107147      | 1   | WASHER, 5/16 FLAT, CZ                                 |
| 6      | 5050407X10YP | 1   | KEY, 1/4 SQ X 1-1/4                                   |
| 7      | 1677029SM    | 2   | SCREW, Set, Hex Socket Head, Cup Point, 5/16-18 x 3/8 |
| 8      | 5107285FS    | 1   | PULLEY  |
| 9      | 5109327FS    | 1   | MUFFLER   |
| 10     | 5109328FS    | 1   | MANIFOLD  |
| 11     | 5107305FS    | 1   | CLAMP, Muffler  |

Not For Reproduction

# Fuel Tank and Hose Group

Note: Unless noted otherwise, use the standard torque specifications

Mfg. No: 5901807-Z3000



## Fuel Tank and Hose Group

| REF NO | PART NO     | QTY | DESCRIPTION   |
|--------|-------------|-----|---|
| 1      | 5107316     | 1   | FUEL CAP, 2.0, NON VENTED   |
| 2      | 5418869     | 1   | WELD, FUEL TANK, BLOWER<br>-(S/N: 4001291676 and below)                   |
| 2      | 5420219     | 1   | ASSM, FUEL TANK, BLOWER<br>-(S/N: 4001291677 and above)(Refer to Note: *) |
| 3      | 5106863     | 4   | SCREW, 1/4-20 X 3/4, FPHMS, SS  |
| 4      | 5025126     | 4   | NUT, 1/4-20 HEX SERR. FLANGE  |
| 5      | 5050831X6   | 1   | HOSE, 1/4" FUEL, 6" LONG  |
| 6      | 5107072     | 1   | VALVE, FUEL SHUT OFF  |
| 7      | 5107073     | 1   | PICKUP TUBE ASM,FUEL 16.75  |
| 8      | 5106957     | 1   | FITTING, 1/4X3/16 REDUCER<br>-(For units with 1/4" hose.)                 |
| 9      | 5106956     | 1   | FITTING, 1/4 TEE,BARB TYPE  |
| 10     | 5106954     | 1   | FITTING, 90, 1/4-18 NPT NYLON   |
| 11     | 7700552X2P5 | 3   | HOSE, VAPOR, 5MM ID, 2.50 LG  |
| 12     | 80025019    | 1   | FILTER, FUEL  |
| 13     | 5106955     | 1   | CHECK VALVE ASMY  |
| 14     | 93807       | 4   | CLAMP, Hose   |
| 15     | 7700552X4   | 1   | HOSE, VAPOR, 5MM ID, 4.00 LG  |
| 16     | 5021030     | 1   | TIE, SELF-LOCKING, 6"   |
| 17     | 5050831X4   | 1   | 1/4" Fuel Line, 4" Long   |

---

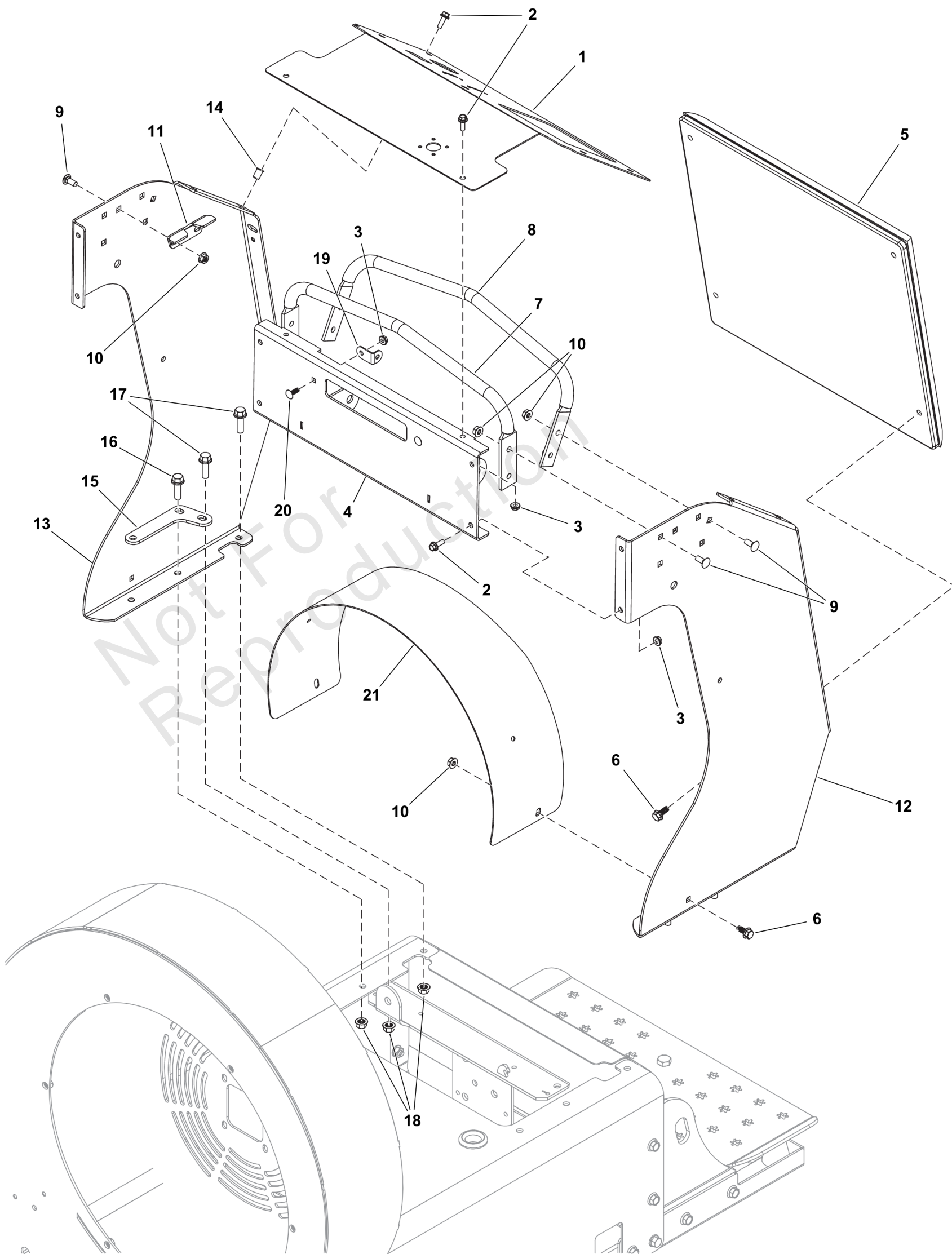
**Footnotes:**

Note: \*Includes reference items #1, #7, and #10.

# Handle Bar Group

Note: Unless noted otherwise, use the standard torque specifications

Mfg. No: 5901807-Z3000



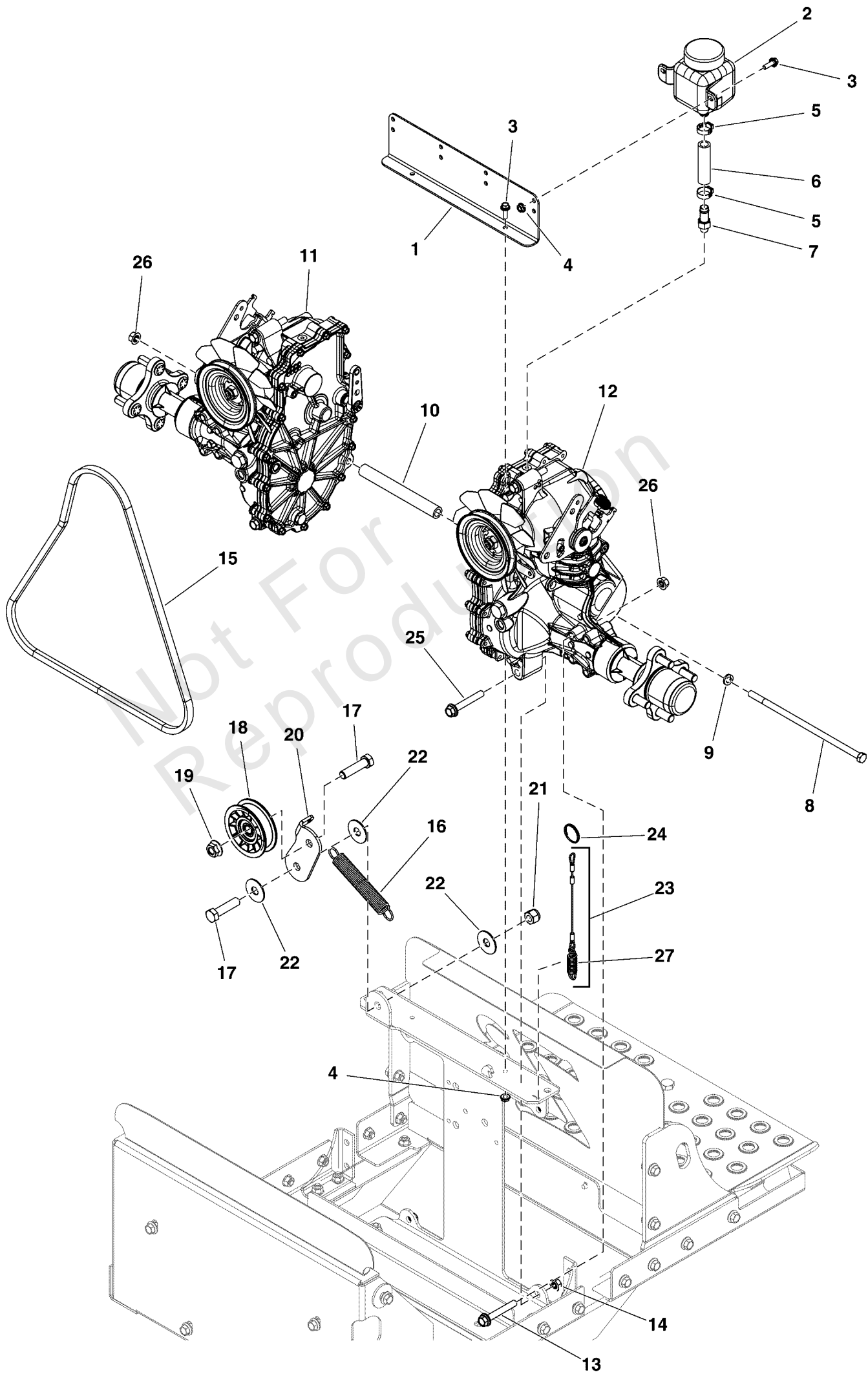
## Handle Bar Group

| REF NO | PART NO     | QTY | DESCRIPTION                        |
|--------|-------------|-----|------------------------------------|
| 1      | 5601267     | 1   | PLATE, DASH PANEL, NEW WITH DECALS |
| 2      | 5106872FS   | 10  | BOLT                               |
| 3      | 5025126FS   | 10  | NUT                                |
| 4      | -----       | 1   | WELD, DASH FRONT PANEL - ORG       |
| 5      | 5107538FS   | 1   | PAD, KNEE                          |
| 6      | 703354      | 6   | SCREW, 5/16-18                     |
| 7      | 5107044AFS  | 1   | HANDLE, FRONT                      |
| 8      | 5107045AFS  | 1   | HANDLE, REAR                       |
| 9      | 5025145X6SM | 12  | BOLT, 5/16-18 X 3/4",              |
| 10     | 5025127SM   | 14  | NUT, 5/16-18 HEX SERR              |
| 11     | 5107391FS   | 2   | BRACKET                            |
| 12     | 5418579AD   | 1   | CONTROL TOWER Z3, LH - ORG         |
| 13     | 5418578AD   | 1   | CONTROL TOWER Z3, RH - ORG         |
| 14     | 5106833FS   | 4   | NUT                                |
| 15     | 5107544AFS  | 2   | PLATE                              |
| 16     | 704038      | 4   | SCREW                              |
| 17     | 704038      | 4   | SCREW                              |
| 18     | 5025666FS   | 8   | NUT                                |
| 19     | 84007036    | 2   | BRACKET, L Headlight Mount         |
| 20     | 703575      | 2   | BOLT, 1/4-20X.750, SQ              |
| 21     | 5418616AD   | 1   | PLATE, BELT GUARD COVER, Z3 - ORG  |

# Hydraulic Group

Note: Unless noted otherwise, use the standard torque specifications

Mfg. No: 5901807-Z3000





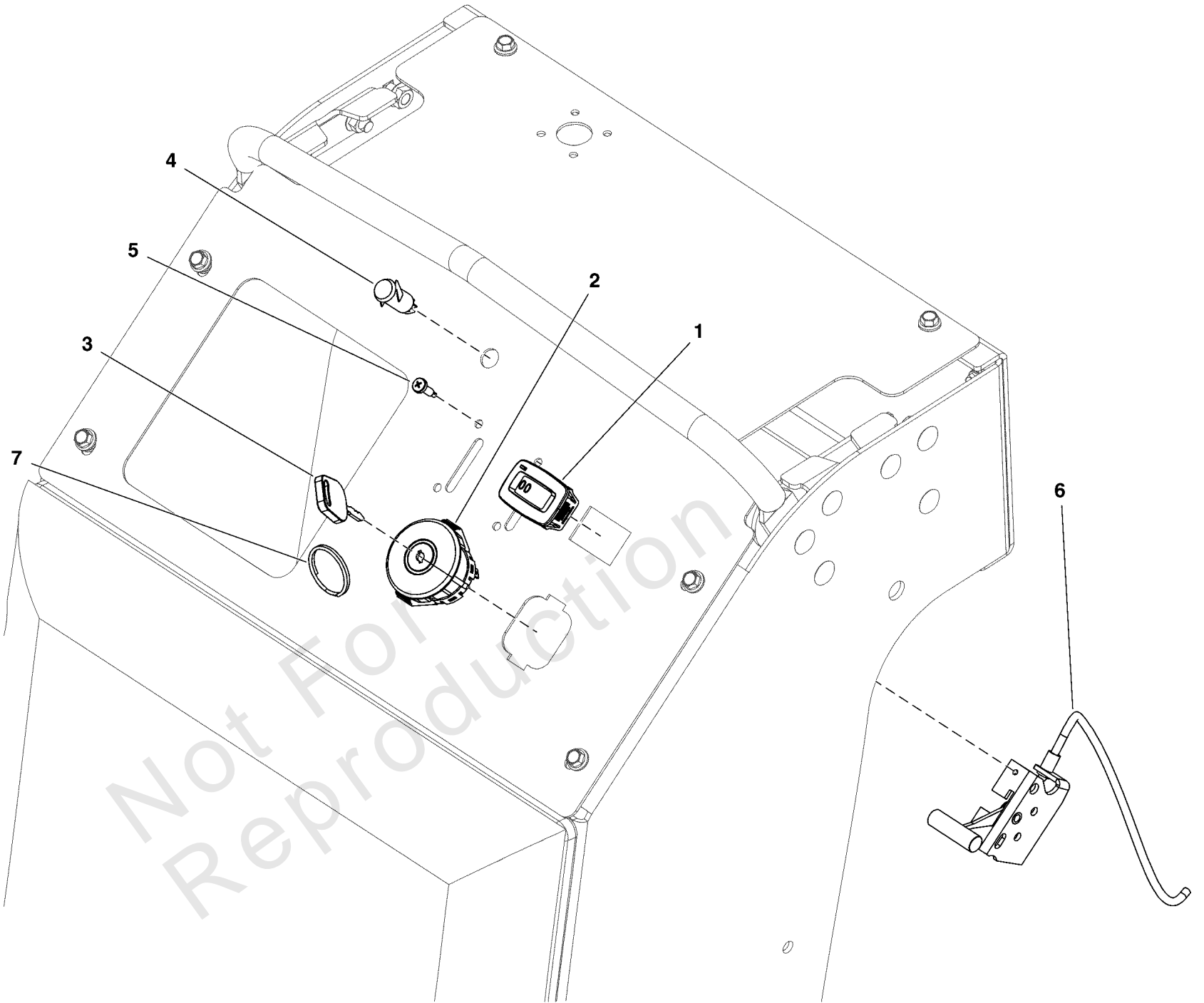
## Hydraulic Group

| REF NO | PART NO        | QTY | DESCRIPTION   |
|--------|----------------|-----|---|
| 1      | 5107366AAFS    | 1   | MOUNT, TANK   |
| 2      | 5100473SM      | 2   | RESERVOIR   |
| 3      | 5106872FS      | 6   | BOLT  |
| 4      | 5025126FS      | 6   | NUT   |
| 5      | 5025474SM      | 4   | CLAMP - HOSE  |
| 6      | 5050857X2P75FS | 2   | HOSE  |
| 7      | 5107224FS      | 2   | FITTING   |
| 8      | 5025667FS      | 1   | BOLT  |
| 9      | 5025156FS      | 1   | WASHER  |
| 10     | 5107370FS      | 1   | SPACER  |
| 11     | 5107227        | 1   | TRANSAXLE, ZT3100, RH, ZJ-LPRP-3A7C-19XX<br>-(S/N: 40015467047 and below) |
| 11     | 84006961       | 1   | TRANSAXLE<br>-(S/N: 40015467048 and above)                                |
| 12     | 5107222        | 1   | TRANSAXLE, ZT3100, LH, ZJ-HPRP-3A7B-19XX<br>-(S/N: 40015467047 and below) |
| 12     | 84006962       | 1   | TRANSAXLE<br>-(S/N: 40015467048 and above)                                |
| 13     | 5025670        | 4   | BOLT, HEX, 3/8-16 X 3", SER FLG GRD5, CZ                                  |
| 14     | 5025666FS      | 4   | NUT   |
| 15     | 5106821FS      | 1   | BELT, DRIVE   |
| 16     | 5106923FS      | 1   | SPRING  |
| 17     | 5025017X16YP   | 2   | BOLT, 1/2-13 X 2 GD5  |
| 18     | 5107103FS      | 1   | PULLEY, IDLER   |
| 19     | 770225         | 1   | NUT   |
| 20     | 5107365AAFS    | 1   | ARM, IDLER  |
| 21     | 5025056FS      | 1   | NUT   |
| 22     | 5107348FS      | 3   | WASHER  |
| 23     | 5107300FS      | 2   | CABLE, Hydraulic Control<br>-(Includes item # 28.)                        |
| 24     | 5108012FS      | 2   | KEY   |
| 25     | 5106859FS      | 4   | BOLT  |
| 26     | 5025394SM      | 5   | NUT, 3/8-16 HEX NYLOCK  |
| 27     | 5106888FS      | 2   | SPRING, EXTENSION   |

# Instrument Control Panel Group

Note: Unless noted otherwise, use the standard torque specifications

Mfg. No: 5901807-Z3000



## Instrument Control Panel Group

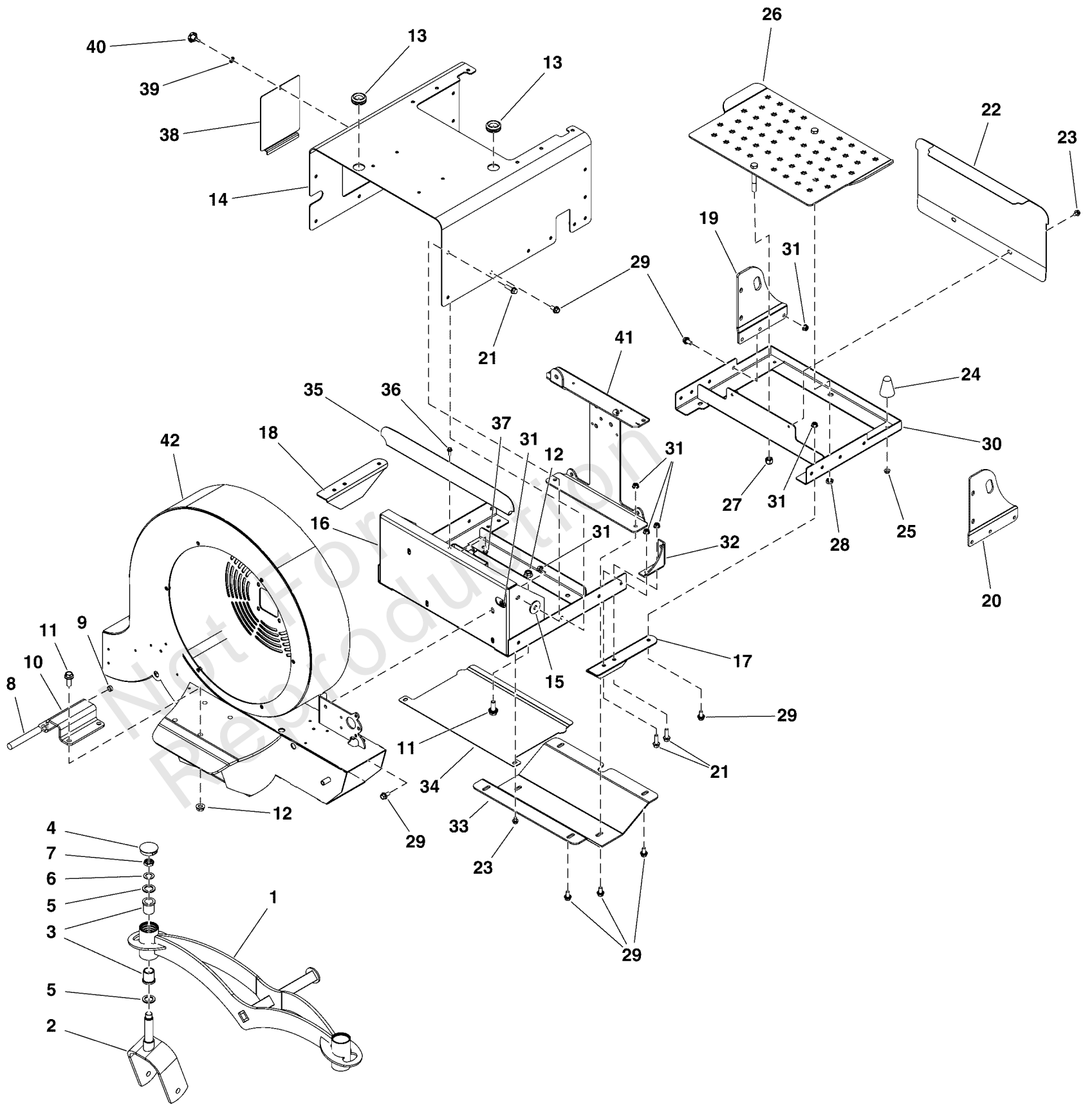
| REF NO | PART NO   | QTY | DESCRIPTION                          |
|--------|-----------|-----|--------------------------------------|
| 1      | 5106789FS | 1   | METER, HOUR                          |
| 2      | 5107021FS | 1   | SWITCH, Ignition                     |
| 3      | 1714054SM | 2   | KEY-IGNITIOM W/PLASTI                |
| 4      | 5106974FS | 1   | LIGHT, INDICATOR                     |
| 5      | 5106862FS | 4   | SCREW                                |
| 6      | 5107194FS | 2   | CABLE, Throttle/Choke                |
| 7      | 5108012FS | 1   | KEY<br>-(Key Ring for ignition keys) |

Not For Reproduction

# Main Frame Group

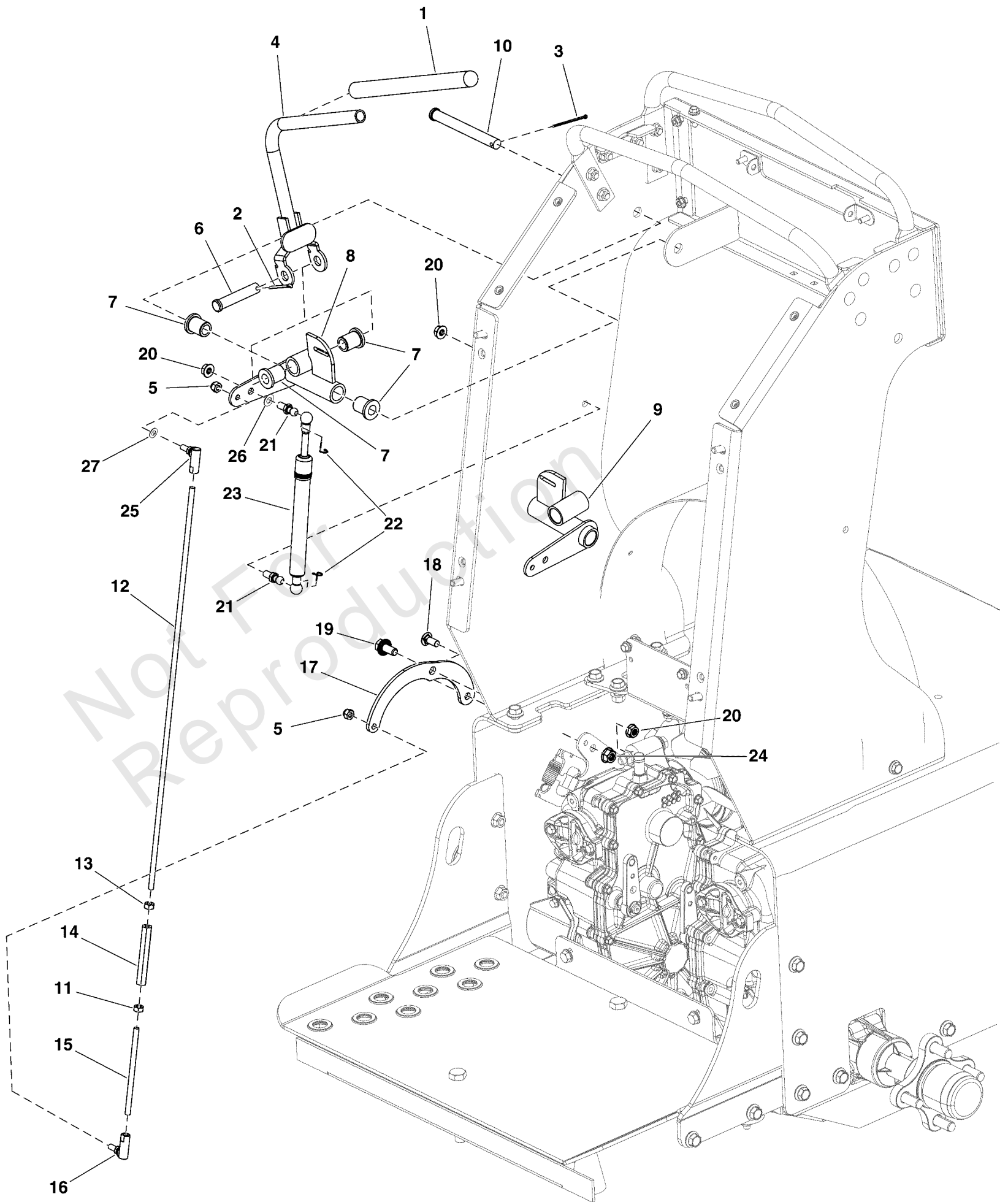
Note: Unless noted otherwise, use the standard torque specifications

Mfg. No: 5901807-Z3000



## Main Frame Group

| REF NO | PART NO    | QTY | DESCRIPTION                               |
|--------|------------|-----|---|
| 1      | 5418613A   | 1   | WELD, FRONT END FRAME, Z3 - BLK           |
| 2      | 5418606A   | 2   | WELD, CASTER FORK, Z3 - BLK               |
| 3      | 5021541    | 4   | BUSHING, FLANGE                           |
| 4      | 5107567    | 2   | CAP, GREASE, PLASTIC                      |
| 5      | 5107778    | 4   | WASHER, 1 X 10GA, MACH, CZ                |
| 6      | 5107779    | 2   | WASHER, 3/4 X 14GA, MACH, CZ              |
| 7      | 5106783    | 2   | NUT, 3/4-10, NYLOCK JAM, CZ               |
| 8      | 5107356    | 4   | CORD, RUBBER                              |
| 9      | -----      | 2   | RUBBER BAND<br>-(Not a serviceable part.) |
| 10     | 5419091AD  | 1   | PLATE, FRONT END TORSION C - ORG          |
| 11     | 5106786    | 6   | BOLT, 1/2-13 X 1-1/4, FLANGE, CZ          |
| 12     | 5106787    | 6   | NUT, 1/2-13 SERRATED FLANGE, CZ           |
| 13     | 5106788    | 2   | GROMMET, RUBBER                           |
| 14     | 5418580A   | 1   | WELD, MOTOR BOX, Z3 - BLK                 |
| 15     | 5107390    | 2   | SPACER, MOTOR BOX 10GA                    |
| 16     | 5107547A   | 1   | WELD, Z3 FRONT CHASSIS - BLK              |
| 17     | 5107383A   | 1   | BRACKET, BOTTOM CHASSIS LEFT - BLK        |
| 18     | 5107382A   | 1   | BRACKET, BOTTOM CHASSIS RIGHT - BLK       |
| 19     | -----      | 1   | PLATE, TIE DOWN RH - BLK                  |
| 20     | -----      | 1   | PLATE TIE DOWN LH - BLK                   |
| 21     | 5025390X10 | 10  | BOLT, 3/8-16 X 1-1/4, FLANGE, GD 5, CZ    |
| 22     | 5419301A   | 1   | PLATE, TOE KICK, FB3000 - BLK             |
| 23     | 5106898    | 4   | SCREW, 5/16-18 X 1/2, SLF TPNG, CZ        |
| 24     | 5107206    | 4   | BUMPER, RUBBER, 5/16-18                   |
| 25     | 5025127    | 4   | NUT, 5/16-18 HEX SERRATED FLANGE (SMALL)  |
| 26     | 5418525A   | 1   | WELD, PLATFORM, BLWR - BLK                |
| 27     | 5025056    | 1   | NUT, 1/2-13 HEX NYLON LOCK                |
| 28     | 5025646    | 1   | NUT, NTE, 1/2-13, CZ                      |
| 29     | 5106881    | 28  | BOLT, 3/8-16 X 3/4, FLANGE, CZ            |
| 30     | 5107561A   | 1   | WELD, Z3 REAR CHASSIS - BLK               |
| 31     | 5025666    | 38  | NUT, 3/8-16, FLANGE, SERRATED UNDER HEAD  |
| 32     | 5107387A   | 2   | WELD, TRANS 90 DEG MOUNT BRACKET - BLK    |
| 33     | 5107384A   | 1   | PLATE, SKID - BLK                         |
| 34     | 5107385A   | 1   | GUARD, LOWER DEBRIS - BLK                 |
| 35     | 5107386A   | 1   | GUARD, FORWARD DEBRIS - BLK               |
| 36     | 5106872    | 2   | BOLT, 1/4-20 X 3/4, FLANGE, CZ            |
| 37     | 5025126    | 2   | NUT, 1/4-20 HEX SERR. FLANGE              |
| 38     | 5419192A   | 1   | PLATE, BATTERY DOOR - BLK                 |
| 39     | 5107350    | 1   | WASHER, INT / EXT TOOTH, CZ               |
| 40     | 5106913    | 1   | KNOB, 1/4-20 X 1/2 CAP SCREW              |
| 41     | 5418591A   | 1   | WELD TRANS I-BEAM, Z3000 - BLK            |
| 42     | 5418642AD  | 1   | WELD, BLOWER HOUSING , Z3 - ORG           |



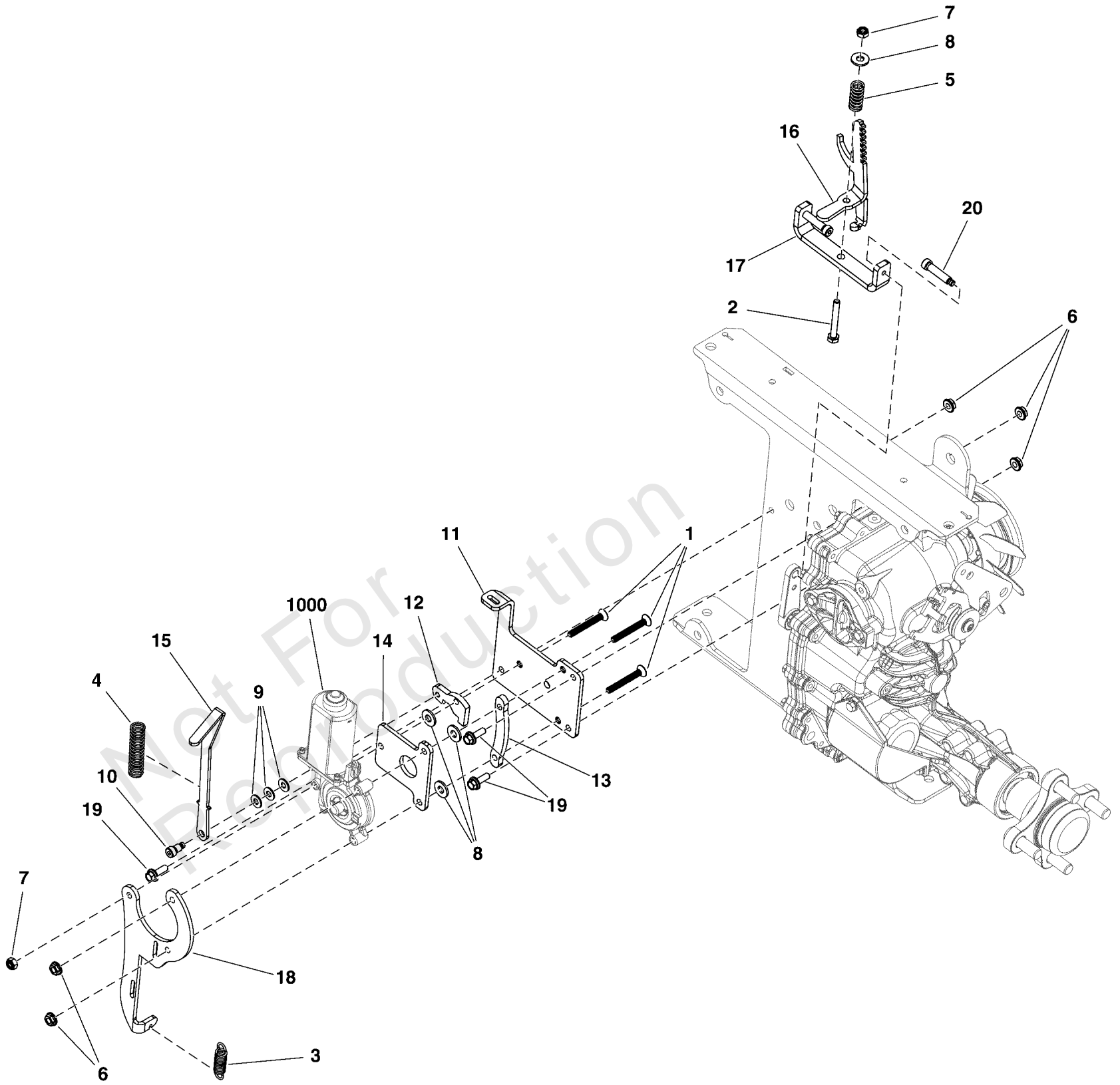
## Motion Control Group

| REF NO | PART NO     | QTY | DESCRIPTION                  |
|--------|-------------|-----|------------------------------|
| 1      | 5106940FS   | 2   | GRIP                         |
| 2      | 5025203X12  | 2   | PIN, COTTER, 1/8 X 1 1/2, CZ |
| 3      | 5107351FS   | 2   | PIN, COTTER                  |
| 4      | 5107368FS   | 2   | CONTROL, HANDLE              |
| 5      | 5106892FS   | 4   | NUT                          |
| 6      | 5022044SM   | 2   | PIN, CLEVIS, 1/2 X 2-        |
| 7      | 5106943FS   | 8   | BUSHING                      |
| 8      | 5107369FS   | 1   | BRACKET, Control             |
| 9      | 5107367FS   | 1   | BRACKET                      |
| 10     | 5025456FS   | 2   | PIN, CLEVIS                  |
| 11     | 7090095FS   | 2   | NUT, 1/4                     |
| 12     | 5107108FS   | 2   | ROD                          |
| 13     | 5106858FS   | 2   | NUT                          |
| 14     | 5106971FS   | 2   | TUBE, CONNECTING             |
| 15     | 5107303FS   | 2   | ROD                          |
| 16     | 5106802FS   | 2   | JOINT, BALL                  |
| 17     | 5107241FS   | 2   | ARM, CONTROL                 |
| 18     | 5025145X6SM | 2   | BOLT, 5/16-18 X 3/4",        |
| 19     | 5106881FS   | 2   | BOLT                         |
| 20     | 5025127SM   | 6   | NUT, 5/16-18 HEX SERR        |
| 21     | 5100941SM   | 4   | BALL STUD                    |
| 22     | 5106969FS   | 4   | CLIP                         |
| 23     | 5107193FS   | 2   | DAMPENER                     |
| 24     | 5025666FS   | 2   | NUT                          |
| 25     | 5106803FS   | 2   | JOINT, BALL                  |
| 26     | 703350      | 2   | WASHER                       |
| 27     | 703332      | 2   | WASHER                       |

# Parking Brake Group S/N: 4002219158 and Below

Note: Unless noted otherwise, use the standard torque specifications

Mfg. No: 5901807-Z3000





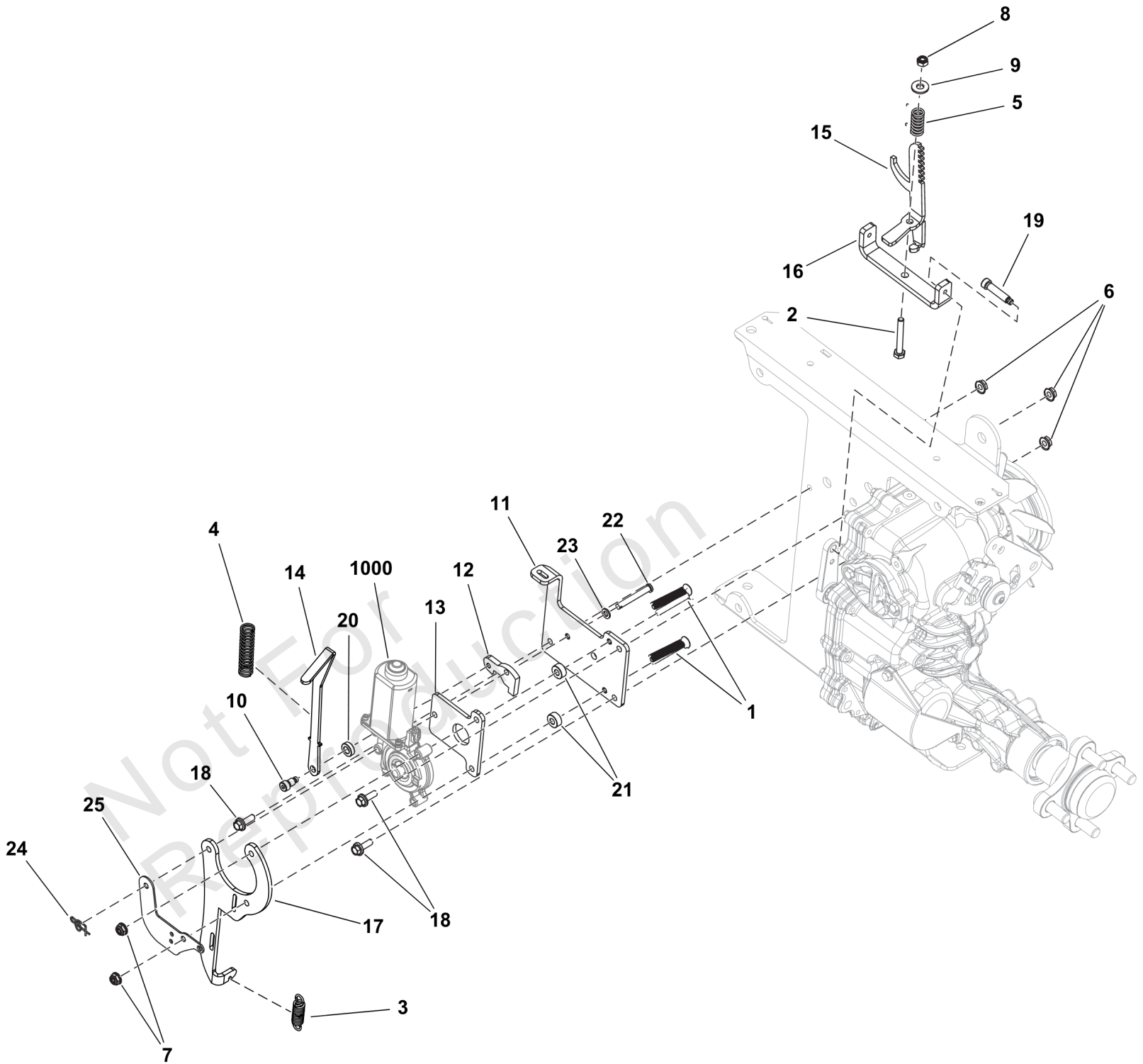
### **Parking Brake Group S/N: 4002219158 and Below**

| REF NO | PART NO    | QTY | DESCRIPTION                    |
|--------|------------|-----|--------------------------------|
| 1      | 5106908    | 3   | SCREW, 1/4-20 X 2, PHLPS, SS   |
| 2      | 5025010X16 | 1   | BOLT, 1/4-20 X 2", GD5         |
| 3      | 5106888    | 1   | SPRING, EXTENSION, #29         |
| 4      | 5106910    | 1   | SPRING, COMPRESSION, #29       |
| 5      | 5106911    | 1   | SPRING, COMPRESSION, #21       |
| 6      | 5025126    | 5   | NUT, 1/4-20 HEX SERR. FLANGE   |
| 7      | 5025095    | 2   | NUT, 1/4-20 HEX NYLON LOCK     |
| 8      | 5106815    | 4   | WASHER, 1/4 SAE, CZ            |
| 9      | 5025154    | 3   | WASHER, 1/4 SAE                |
| 10     | 5106912    | 1   | BOLT, 5/16 X 1/2, SHLDR, SS    |
| 11     | 5107321    | 1   | PLATE, BRAKE BACKING           |
| 12     | 5107322    | 1   | PLATE, BRAKE CAM, CZ           |
| 13     | 5107323AA  | 1   | PLATE, BRAKE SPACER - BLK      |
| 14     | 5107324    | 1   | PLATE, CAM COVER, CZ           |
| 15     | 5107328    | 1   | PLATE, BRAKE RELEASE LEVER,CZ  |
| 16     | 5107325    | 1   | WELD, BRAKE GEAR RACK,CZ       |
| 17     | 5110201FS  | 1   | ARM, Lever                     |
| 18     | 5107327    | 1   | PLATE, SWITCH MOUNT, CZ        |
| 19     | 5106872    | 3   | BOLT, 1/4-20 X 3/4, FLANGE, CZ |
| 20     | 5106941    | 2   | BOLT, 5/16 X 1-1/4, SHLDR, SS  |
| 1000   | -----      | 0   | Refer to: Electrical Group     |

# Parking Brake Group S/N: 4002219159 and above

Note: Unless noted otherwise, use the standard torque specifications

Mfg. No: 5901807-Z3000



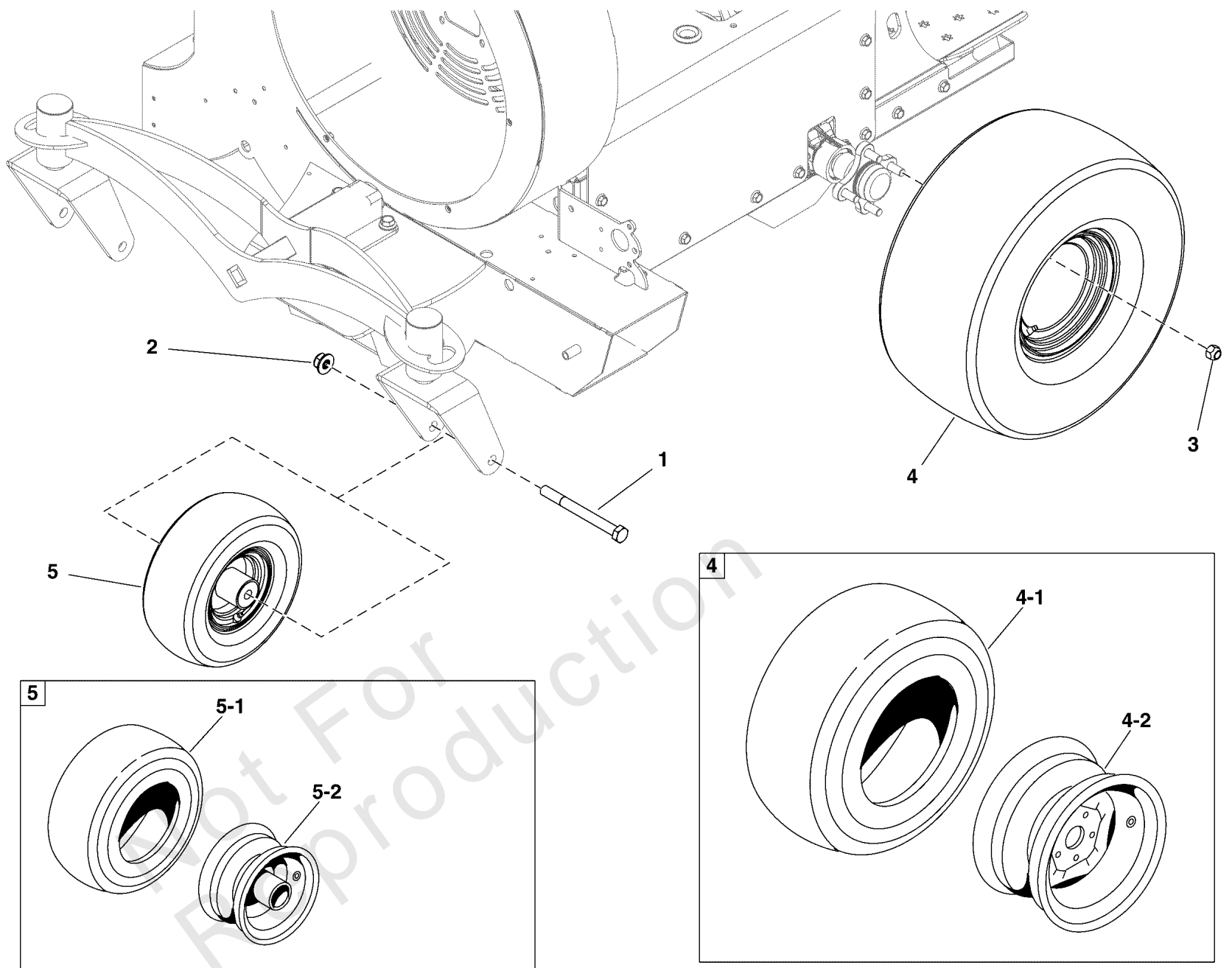
**Parking Brake Group S/N: 4002219159 and above**

| REF NO | PART NO      | QTY | DESCRIPTION                |
|--------|--------------|-----|----------------------------|
| 1      | 5106908FS    | 2   | SCREW                      |
| 2      | 5025010X16FS | 1   | BOLT                       |
| 3      | 5106888FS    | 1   | SPRING, EXTENSION          |
| 4      | 5106910FS    | 1   | SPRING, Compression        |
| 5      | 5106911FS    | 1   | SPRING, COMPRESSION        |
| 6      | 5025126FS    | 3   | NUT                        |
| 7      | 5025391FS    | 2   | NUT                        |
| 8      | 5025095SM    | 1   | NUT, 1/4-20 HEX NYLON      |
| 9      | 5106815FS    | 1   | WASHER                     |
| 10     | 5106912FS    | 1   | BOLT                       |
| 11     | 5107321FS    | 1   | PLATE                      |
| 12     | 5107322FS    | 1   | PLATE                      |
| 13     | 5107324FS    | 1   | PLATE                      |
| 14     | 5107328FS    | 1   | PLATE                      |
| 15     | 5107325FS    | 1   | BRACKET, BRAKE             |
| 16     | 5110201FS    | 1   | ARM, Lever                 |
| 17     | 5107327FS    | 1   | PLATE, SWITCH              |
| 18     | 5106872FS    | 3   | BOLT                       |
| 19     | 5106941FS    | 2   | BOLT                       |
| 20     | 84008621     | 1   | SPACER                     |
| 21     | 84008622     | 2   | SPACER                     |
| 22     | 84008623     | 1   | PIN, Clevis                |
| 23     | 84008624     | 1   | WASHER, Flat               |
| 24     | 703355       | 1   | COTTER PIN, 3/8            |
| 25     | 84008625     | 1   | PLATE, Switch              |
| 1000   | ----         | 0   | Refer to: Electrical Group |

# Wheel and Tire Group

Note: Unless noted otherwise, use the standard torque specifications

Mfg. No: 5901807-Z3000



## Wheel and Tire Group

| REF NO | PART NO   | QTY | DESCRIPTION  |
|--------|-----------|-----|--|
| 1      | 5107289   | 2   | BOLT, 5/8-11 X 8-1/2, CZ   |
| 2      | 5025403   | 2   | NUT, 5/8-11 HEX NYLOCK FLANGE  |
| 3      | 5020601   | 8   | NUT, 1/2-20, FOR WHEEL BOLT SILVER                                       |
| 4      | 5107875   | 2   | TIRE/WHEEL ASM, 22 X 11.00-10, TURF                                      |
| 4-1    | 5107875X1 | 2   | TIRE, 22-11.00 X 10, 4-PLY (TIRE ONLY)<br>-(One per tire)                |
| 4-2    | 5107875X2 | 2   | WHEEL, 10 X 7 4 ON 4BC, 2.84 PILOT<br>-(One per tire)                    |
| 5      | 5107876   | 2   | TIRE ASSEMBLY, 13 X 6.50 - 6   |
| 5-1    | 5107876X1 | 2   | TIRE, 13/650 X 6 4-PLY SMOOTH, TIRE ONLY<br>-(One per tire)              |
| 5-2    | -----     | 2   | WHEEL, RIM<br>-(Not available for sale. Refer to Complete Tire Assembly) |
| 5-3    | 5107876X3 | 2   | 2 ROLLER BEARINGS, SPANNER, 2 BUSHINGS<br>-(One per tire)                |

Not For Reproduction

# Hardware Identification & Torque Specifications

| Torque Specification Chart                             |           |      |           |      |            |      |            |      |
|--|-----------|------|-----------|------|------------|------|------------|------|
| FOR STANDARD METRIC MACHINE HARDWARE (Tolerance ± 20%) |           |      |           |      |            |      |            |      |
| Property Class   | 5.6       |      | 8.8       |      | 10.9       |      | 12.9       |      |
|  | Class 5.6 |      | Class 8.8 |      | Class 10.9 |      | Class 12.9 |      |
| Size Of Hardware                                       | in/lbs    | Nm.  | in/lbs    | Nm.  | in/lbs     | Nm.  | in/lbs     | Nm.  |
|  | ft/lbs    |      | ft/lbs    |      | ft/lbs     |      | ft/lbs     |      |
| M3   | 5.88      | .56  | 13.44     | 1.28 | 19.2       | 1.80 | 22.92      | 2.15 |
| M4   | 13.44     | 1.28 | 30.72     | 2.90 | 43.44      | 4.10 | 52.56      | 4.95 |
| M5   | 26.4      | 2.50 | 60.96     | 5.75 | 5.97       | 8.10 | 7.15       | 9.7  |
| M6   | 44.64     | 4.3  | 7.3       | 9.9  | 10.3       | 14   | 12.1       | 16.5 |
| M7   | 5.2       | 7.1  | 12.1      | 16.5 | 16.9       | 23   | 19.9       | 27   |
| M8   | 7.7       | 10.5 | 17.7      | 24   | 25         | 34   | 29         | 40   |
| M10  | 15        | 21   | 35        | 48   | 50         | 67   | 59         | 81   |
| M12  | 26        | 36   | 61        | 83   | 86.2       | 117  | 103        | 140  |
| M14  | 42        | 58   | 101       | 132  | 136        | 185  | 162        | 220  |
| M16  | 64        | 88   | 147       | 200  | 210        | 285  | 250        | 340  |
| M18  | 89        | 121  | 202       | 275  | 287        | 390  | 346        | 470  |
| M20  | 126       | 171  | 290       | 390  | 405        | 550  | 486        | 660  |
| M22  | 169       | 230  | 390       | 530  | 559        | 745  | 656        | 890  |
| M24  | 217       | 295  | 497       | 375  | 708        | 960  | 840        | 1140 |
| M27  | 320       | 435  | 733       | 995  | 1032       | 1400 | 1239       | 1680 |
| M30  | 435       | 590  | 995       | 1350 | 1401       | 1900 | 1681       | 2280 |
| M33  | 590       | 800  | 1349      | 1830 | 1902       | 2580 | 2278       | 3090 |
| M36  | 759       | 1030 | 1740      | 2360 | 2441       | 3310 | 2935       | 3980 |
| M39  | 988       | 1340 | 2249      | 3050 | 3163       | 4290 | 3798       | 5150 |

| Torque Specification Chart                      |             |       |             |       |             |         |
|---|-------------|-------|-------------|-------|-------------|---------|
| FOR STANDARD MACHINE HARDWARE (Tolerance ± 20%) |             |       |             |       |             |         |
| Hardware Grade                                  | No Marks    |       | SAE Grade 5 |       | SAE Grade 8 |         |
|   | SAE Grade 2 |       | SAE Grade 5 |       | SAE Grade 8 |         |
| Size Of Hardware                                | in/lbs      | Nm.   | in/lbs      | Nm.   | in/lbs      | Nm.     |
|   | ft/lbs      |       | ft/lbs      |       | ft/lbs      |         |
| 8-32  | 19          | 2.1   | 30          | 3.4   | 41          | 4.6     |
| 8-36  | 20          | 2.3   | 31          | 3.5   | 43          | 4.9     |
| 10-24   | 27          | 3.1   | 43          | 4.9   | 60          | 6.8     |
| 10-32   | 31          | 3.5   | 49          | 5.5   | 68          | 7.7     |
| 1/4-20  | 66          | 7.6   | 8           | 10.9  | 12          | 16.3    |
| 1/4-28  | 76          | 8.6   | 10          | 13.6  | 14          | 19.0    |
| 5/16-18   | 11          | 15.0  | 17          | 23.1  | 25          | 34.0    |
| 5/16-24   | 12          | 16.3  | 19          | 25.8  | 29          | 34.0    |
| 3/8-16  | 20          | 27.2  | 30          | 40.8  | 45          | 61.2    |
| 3/8-24  | 23          | 31.3  | 35          | 47.6  | 50          | 68.0    |
| 7/16-14   | 30          | 40.8  | 50          | 68.0  | 70          | 95.2    |
| 7/16-20   | 35          | 47.6  | 55          | 74.8  | 80          | 108.8   |
| 1/2-13  | 50          | 68.0  | 75          | 102.0 | 110         | 149.6   |
| 1/2-20  | 55          | 74.8  | 90          | 122.4 | 120         | 163.2   |
| 9/16-12   | 65          | 88.4  | 110         | 149.6 | 150         | 204.0   |
| 9/16-18   | 75          | 102.0 | 120         | 163.2 | 170         | 231.2   |
| 5/8-11  | 90          | 122.4 | 150         | 204.0 | 220         | 299.2   |
| 5/8-18  | 100         | 136   | 180         | 244.8 | 240         | 326.4   |
| 3/4-10  | 160         | 217.6 | 260         | 353.6 | 386         | 525.0   |
| 3/4-16  | 180         | 244.8 | 300         | 408.0 | 420         | 571.2   |
| 7/8-9   | 140         | 190.4 | 400         | 544.0 | 600         | 816.0   |
| 7/8-14  | 155         | 210.8 | 440         | 598.4 | 660         | 897.6   |
| 1-8   | 220         | 299.2 | 580         | 788.8 | 900         | 1,244.0 |
| 1-12  | 240         | 326.4 | 640         | 870.4 | 1,000       | 1,360.0 |

The guides and ruler furnished below are designed to help you select the appropriate hardware.

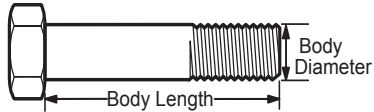


Nut, M8

Thread Diameter (mm)

Inside Diameter (in)      Threads per inch

Nut, 1/2-16

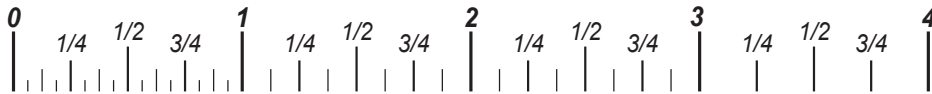


Screw, M8- 1.25 x 25

Thread Diameter (mm)      Distance between threads (mm)      Body Length (mm)

Body Diameter      Threads per inch      Body Length (in)

Screw, 1/2- 16 x 2



## Standard Hardware Sizing

When a washer or nut is identified as 1/2" (M8), this is the *Nominal size*, meaning the *inside diameter* is 1/2 inch (8mm metric thread diameter); if a second number is present it represents the *threads per inch* (distance between threads).

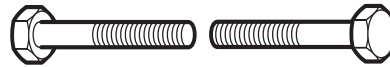
When bolt or capscrew is identified as 1/2 - 16 x 2" (M8 - 1.25 x 50), this means the *Nominal size*, or body diameter is 1/2 inch (8mm metric thread diameter), the second number, 16, represents the *threads per inch*, (*distance between threads*). The final number is the body length of the bolt or screw, 2 inches (50mm).

## NOTES

- These torque values are to be used for all hardware excluding: locknuts, self-tapping screws, thread forming screws, sheet metal screws and socket head setscrews.
- Recommended seating torque values for locknuts:
  - for prevailing torque locknuts - use 65% of grade 5 torques.
  - for flange whizlock nuts and screws - use 135% of grade 5 torques.
- Unless otherwise noted on assembly drawings, all torque values must meet this specification.

## Common Hardware Types

Hex Head Capscrew



Washer



Carriage Bolt



Hex Nut

## Wrench & Fastener Size Guide

|                                  |                                  |                                  |  |                                 |
|----------------------------------|----------------------------------|----------------------------------|--|---------------------------------|
|                                  |                                  |                                  |  |                                 |
| 1/4" Bolt or Nut<br>Wrench—7/16" | 5/16" Bolt or Nut<br>Wrench—1/2" | 3/8" Bolt or Nut<br>Wrench—9/16" | 7/16" Bolt or Nut<br>Wrench (Bolt)—5/8"<br>Wrench (Nut)—11/16" | 1/2" Bolt or Nut<br>Wrench—3/4" |
| M6 Bolt or Nut<br>Wrench—10mm    | M8 Bolt or Nut<br>Wrench—13mm    | M10 Bolt or Nut<br>Wrench—17mm   | M12 Bolt or Nut<br>Wrench—19mm                                 | M14 Bolt or Nut<br>Wrench—22mm  |

